

# JUNGO PROPERTY, Nevada



**Exploration → Discovery → Value**

# Cautionary Statement



This presentation (“**Presentation**”) contains forward-looking information that involves substantial known and unknown risks and uncertainties, most of which are beyond the control of Avidian Gold Corp. (“**Avidian**”). Forward-looking statements include estimates and statements that describe Avidian’s future plans, objectives or goals, including words to the effect that Avidian or its management expects a stated condition or result to occur. Forward-looking statements may be identified by such terms as “believes”, “anticipates”, “expects”, “estimates”, “may”, “could”, “would”, “will”, or “plan”. Since forward-looking statements are based on assumptions and address future events and conditions, by their very nature they involve inherent risks and uncertainties. Although these statements are based on information currently available to Avidian, Avidian provides no assurance that actual results will meet management’s expectations. Risks, uncertainties and other factors involved with forward-looking information could cause actual events, results, performance, prospects and opportunities to differ materially from those expressed or implied by such forward-looking information. Forward looking information in this presentation includes, but is not limited to, Avidian’s objectives, goals or future plans, statements, details of the qualifying transaction with Marching Moose Capital Corp. (the “**Transaction**”), exploration results, potential mineralization, Avidian’s portfolio, treasury, management team and enhanced capital markets profile, the proposed private placement, the timing of the Transaction, the estimation of mineral resources, exploration and mine development plans, timing of the commencement of operations and estimates of market conditions. Factors that could cause actual results to differ materially from such forward-looking information include, but are not limited to, problems, expenses, difficulties, complications and delays frequently encountered in connection with the establishment of any business, failure or inability to complete the Transaction on the terms as proposed, failure to obtain the required approvals of regulators, failure to identify mineral resources, failure to convert estimated mineral resources to reserves, the preliminary nature of metallurgical test results, delays in obtaining or failures to obtain required governmental, regulatory, environmental or other project approvals, political risks, unprofitable efforts resulting not only from the failure to discover mineral deposits but also from finding mineral deposits that, though present, are insufficient in quantity and quality to return a profit from production, uncertainties relating to the availability and costs of financing needed in the future, changes in equity markets, inflation, changes in exchange rates, fluctuations in commodity prices, delays in the development of projects, capital and operating costs varying significantly from estimates and the other risks involved in the mineral exploration and development industry. There is no assurance that Avidian’s mineral exploration and development activities will result in any discoveries of commercial bodies of ore. Mining exploration requires ready access to mining equipment such as drills, and crews to operate that equipment. There can be no assurance that such resources will be available to Avidian on a timely basis or at a reasonable cost. Unusual or infrequent weather phenomena, sabotage, or other interference in the maintenance or provision of infrastructure required for mineral exploration could adversely affect Avidian’s operations, financial condition and results of operations. The further development and exploration of Avidian’s projects depends upon Avidian’s ability to obtain financing through equity financing, joint ventures, debt financing, or other means. There is no assurance that Avidian will be successful in obtaining required financing as and when needed. There is no guarantee that Avidian’s title to such properties will not be challenged or impugned or that the appropriate permits and approvals will be obtainable on reasonable terms or on a timely basis; the licenses will be renewed upon their expiry; and that Avidian will be able to explore its properties as permitted or to enforce its rights with respect to its properties.

Although Avidian believes that the assumptions and factors used in preparing the forward-looking information in this presentation are reasonable, undue reliance should not be placed on such information, which only applies as of the date of this Presentation, and no assurance can be given that such events will occur in the disclosed time frames or at all. Avidian disclaims any intention or obligation to update or revise any forward-looking information, whether as a result of new information, future events or otherwise, other than as required by law.

The technical information contained in this presentation has been verified and approved by Dino Titaro and Tom Setterfield who are registered as a P.Geo in Ontario and a "Qualified Person" for the purpose of National Instrument 43-101, Standards of Disclosure for Mineral Projects of the Canadian Securities Administrators.

## **Notice to Canadian Residents**

The Presentation is not, and under no circumstances are to be construed as, an advertisement or a public offering of the securities referred to herein. The Presentation is not an offer to sell securities of Avidian and is not a solicitation of offers to purchase these securities where the offer or sale is not permitted. No securities commission or similar authority in Canada has reviewed or in any way passed on the merits of the securities described herein and any representation to the contrary is an offence. No person has been authorized to give any information or to make any representation other than as provided for herein.

## **Notice to U.S. Persons**

The Presentation is not, and under no circumstances are to be construed as, an advertisement or a public offering of the securities referred to herein. The Presentation is not an offer to sell any securities of Avidian and is not a solicitation of offers to purchase these securities where the offer or sale is not permitted. No securities commission or similar authority in United States has reviewed or in any way passed on the merits of the securities described herein and any representation to the contrary is an offence. No person has been authorized to give any information or to make any representation other than as provided for herein. U.S. investors are advised that the terms “inferred” and “indicated” resources are recognized and required by Canadian regulations, however the U.S. SEC does not recognize the terms. U.S. investors are cautioned not to assume that any part or all of mineral deposits in these categories would ever be converted to reserves.

- 100% owned, 19.6 sq km in area; part of Jackson Mountains Terrane, a litho tectonic package comprising Jurassic-Triassic island arc volcanic, metasedimentary and intrusive rocks.
- 25 km NE of the Hycroft mine- ~ 25 Moz gold global and 45 km SW of the Sleeper deposit ~ 7 Moz gold global resource.
- Island arc, intrusion-related, structurally controlled Au-Cu mineralization.
- 5 km long gold-copper system with mineralization in a magmatic-hydrothermal environment, controlled by NNE structures which exhibit strong coincidental geophysical signatures associated with sulphide mineralization.
- Previous sampling has encountered significant Au and Cu mineralization.
  - Trench results include:
    - 6.10 m @ 2.12 g/t Au
    - 3.05 m @ 2.36 g/t Au
  - Drill intersections include:
    - 4.27 m @ 1.67 g/t Au, 57.7 g/t Ag and 2.72% Cu,
    - 1.52 m @ 2.50 g/t Au, 71.6 g/t Ag and 0.67% Cu.
    - 12.19 m @ 1.29 g/t Au, 28.6 g/t Ag and 0.72% Cu
- Most of the historical drilling stopped short of testing their targets and may have been drilled down dip to the mineralized targets.
- Many geophysical and geologic targets remain untested along the 5 km mineralized trend, with only a small fraction of this system (< 1.5 km) partially tested to date.



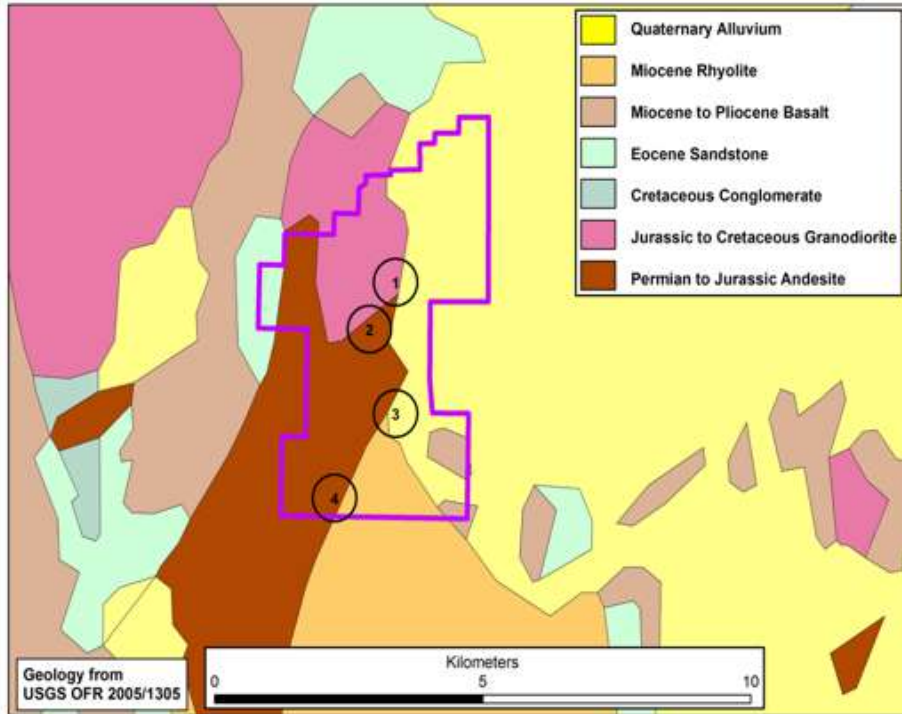
# Property Location



- One shaft and several prospect pits from the early 1900's
- Independence Gold: 1991 – 93, mapping, sampling, geophysics and drilling. Work terminated because mineralization did not fit the “Carlin model” as opposed to an island arc, intrusive-related model.
- Kernow Resources: 1997 – 98, trenching and 8 RC holes, 2 core holes
- Dutch Gold: 2008 to 2013 – trenching and 1 drill hole
- Avidian Gold: Leased project from Dutch Gold in 2011
  - Purchased all Dutch Gold's rights to the property in 2013 eliminating lease payments and royalties
  - Acquired and digitized much of the Independence Gold data
  - Completed ground magnetic survey
  - Preliminary mapping and sampling focused on alteration and mineralization
  - Identified targets that need to be further evaluated.

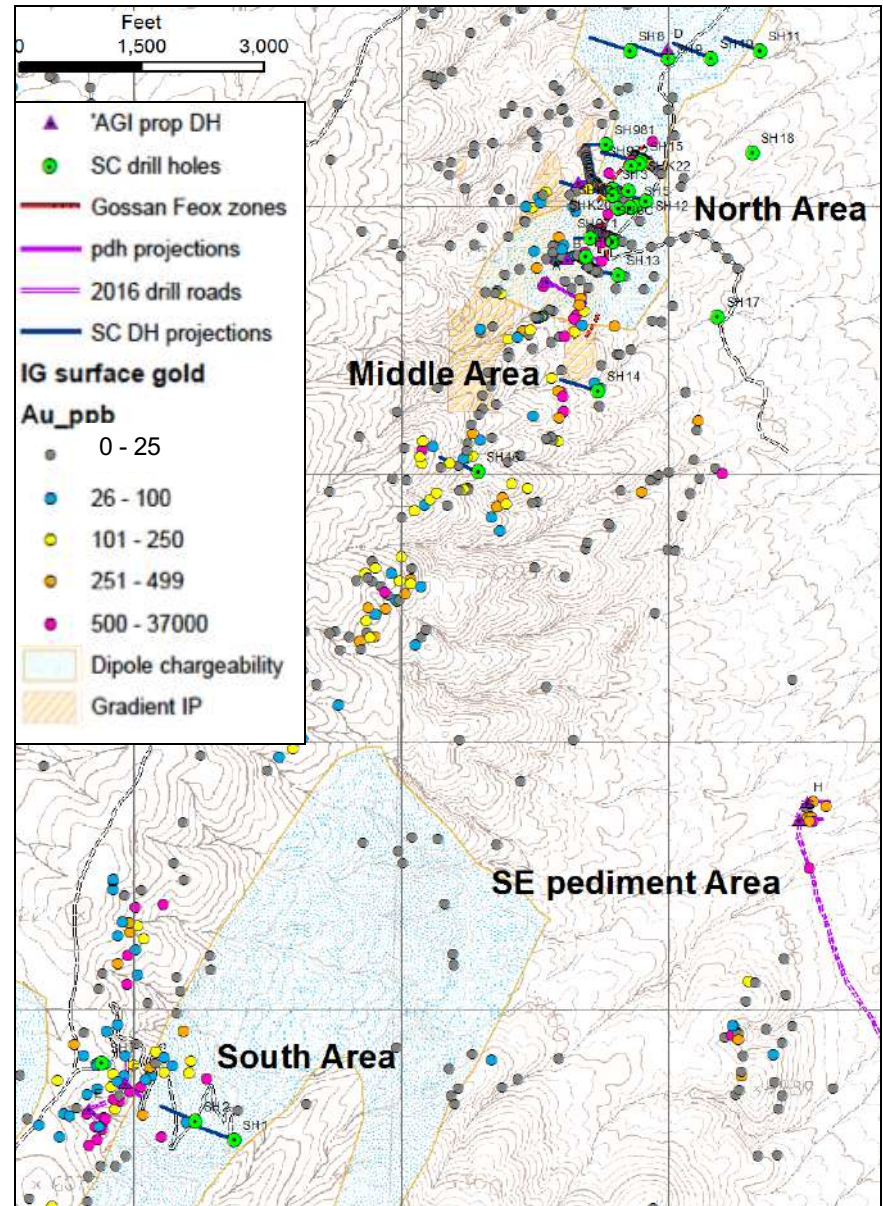


# Geology Map & Mineralized Occurrence Areas

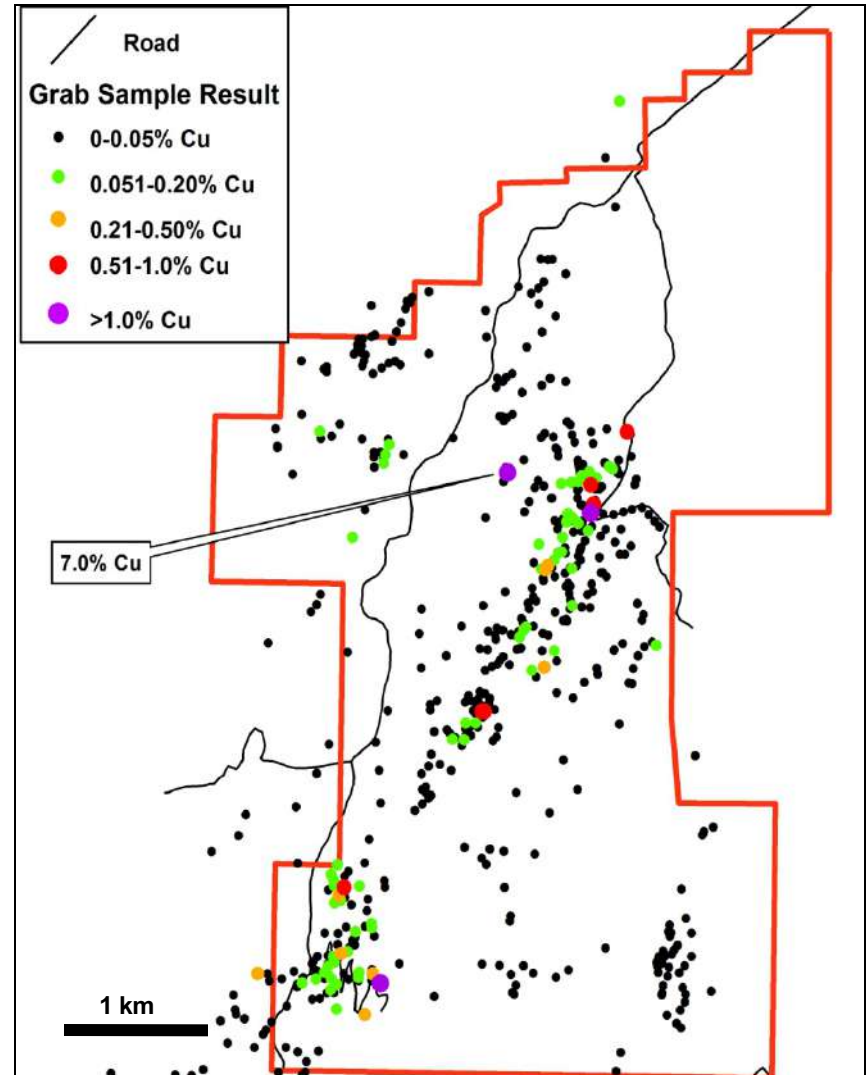
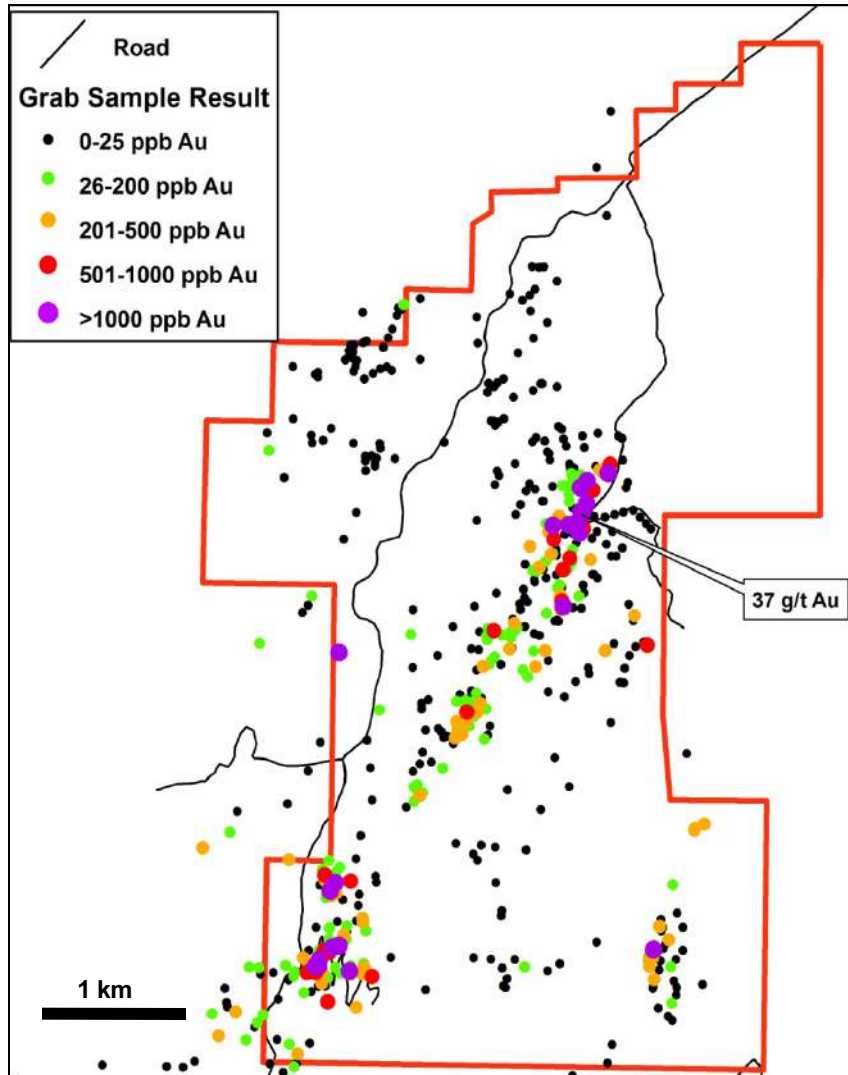


## Occurrence Areas

1. North Area
2. Middle Area
3. SE Pediment Area
4. South Area



# Property Scale Gold & Copper Grab Sample Results

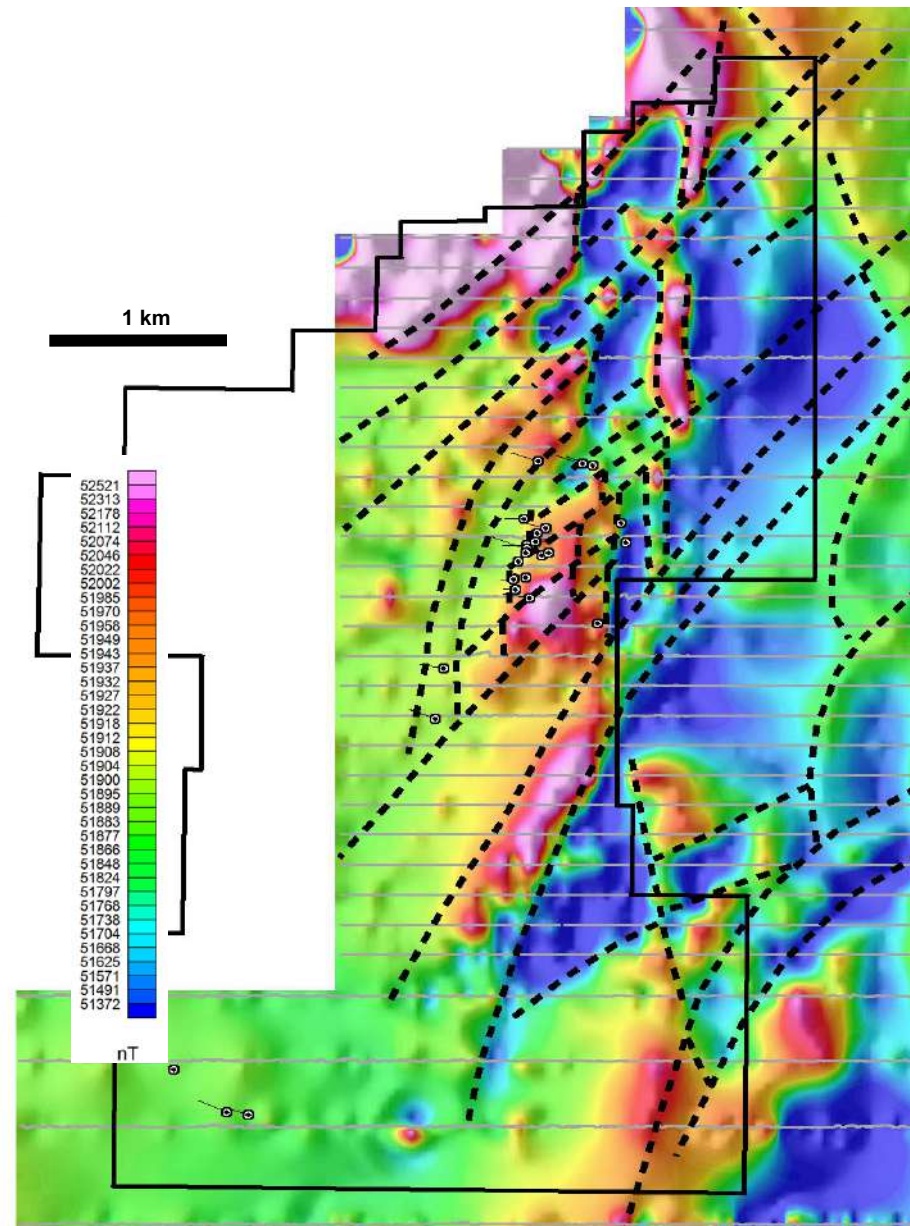


Rock grab samples display a wide distribution of anomalous gold and copper mineralization over a 5 km long NE trend



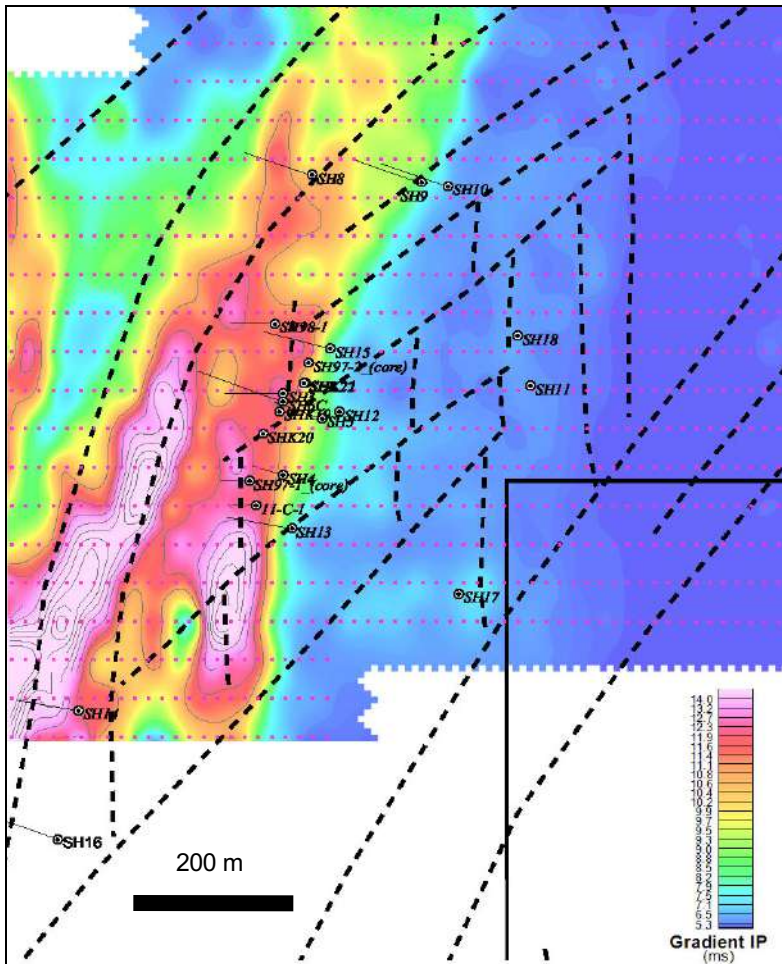
## Total Magnetic Intensity Shaded Image with Magnetic – Structural Interpretation

- Major NNE trending structures, possible feeders to mineralization.
- Magnetic highs possible indications of intrusions.
- Surface Au & Cu trends coincident with the NNE structural corridors.
- Geological data in conjunction with ground IP results indicate the mineralization likely dips to the NW.
- Much of the historical drilling was to the NW (drill hole traces shown), with many drill holes either stopping short or not fully testing NW dipping mineralization.

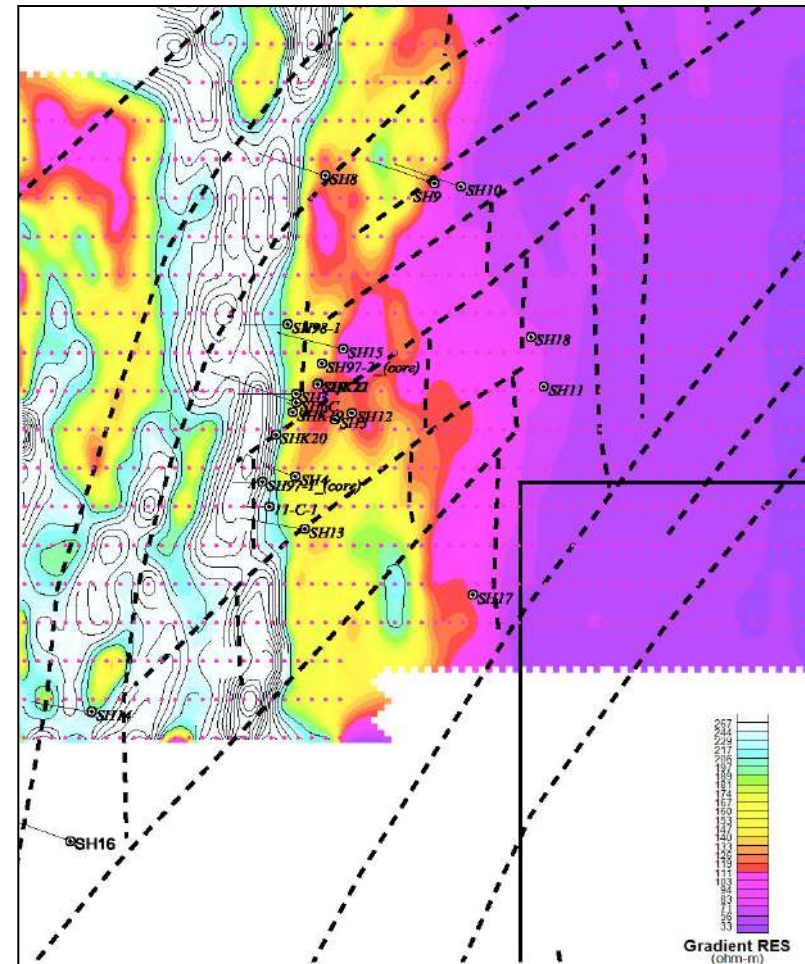




IP Chargeability with Magnetic-Structure Interpretation with historical drill hole locations shown

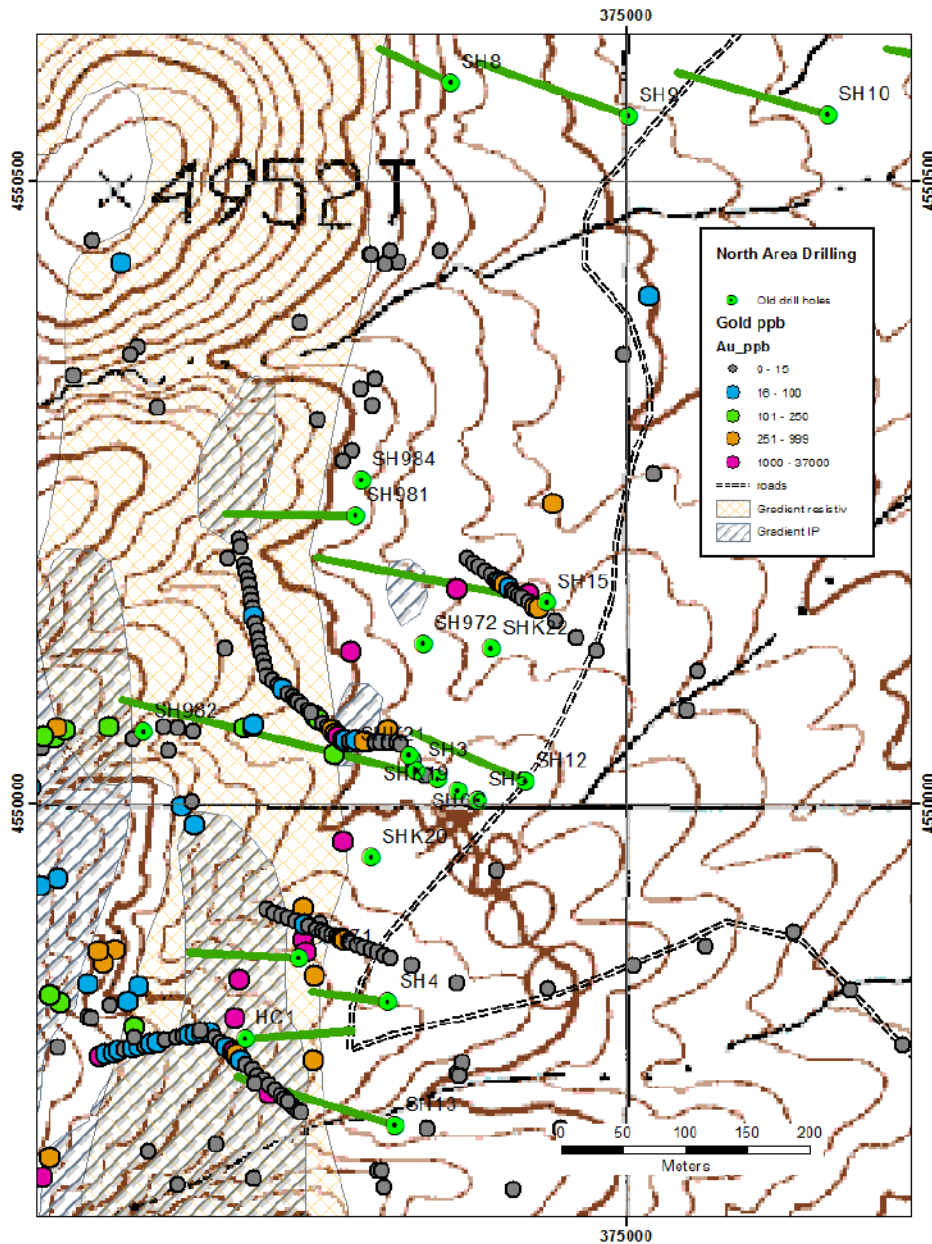


IP Resistivity with Magnetic-Structure Interpretation with historical drill hole locations shown



Chargeability anomalies coincident with resistivity highs suggesting that they are associated with intrusive events.

# Historical Drilling – North Area



## Selected Historical Drill Results

Hole	Interval (m)	Au (g/t)	Ag (g/t)	Cu (%)
SKH 97-2	1.52	2.50	71.6	0.67
SH - 3	7.62	0.90	28.9	1.73
SH - 6C	4.27	1.67	57.7	2.72
SH - 5	12.19	1.29	28.6	0.72
SH - 4	3.05	1.60	18.5	0.50
SH - 13	1.52	1.18	70.4	0.17

- The mineralized structures have been interpreted to dip to the NW, based on geology, surface showings & geophysical data.
- This same interpretation also applies to the Middle and South Target areas.
- Much of the previous drilling (generally less than 200 m from surface) did not intersect or test the mineralized zones.
- Proposed Follow-up Core Hole Locations, shown as A, B, C



# Core Hole Mineralization

The project has at least two styles of mineralization: intrusion-related, epithermal



Hole SH-6C: 4.27 m @ 1.67 g/t Au, 57.74 g/t Ag, 2.74% Cu



Sheared interval strong quartz-sericite-pyrite alteration



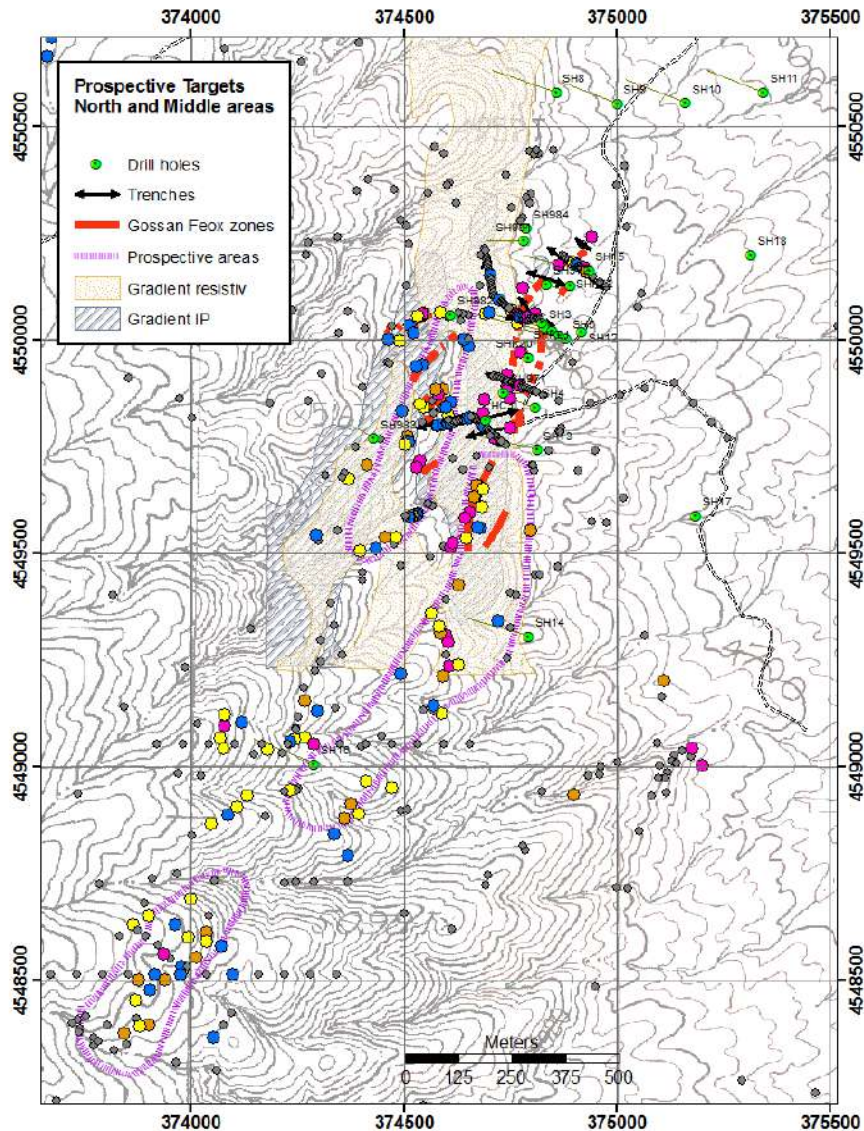


- The majority of the mineralization is strongly clay altered and locally silicified fault breccia or fault gouge.
- Structurally prepared high silica, polymetallic multiple vein/stockwork system and the surface alteration suggests that much of the mineralization is high in the system, and open at depth and along strike.





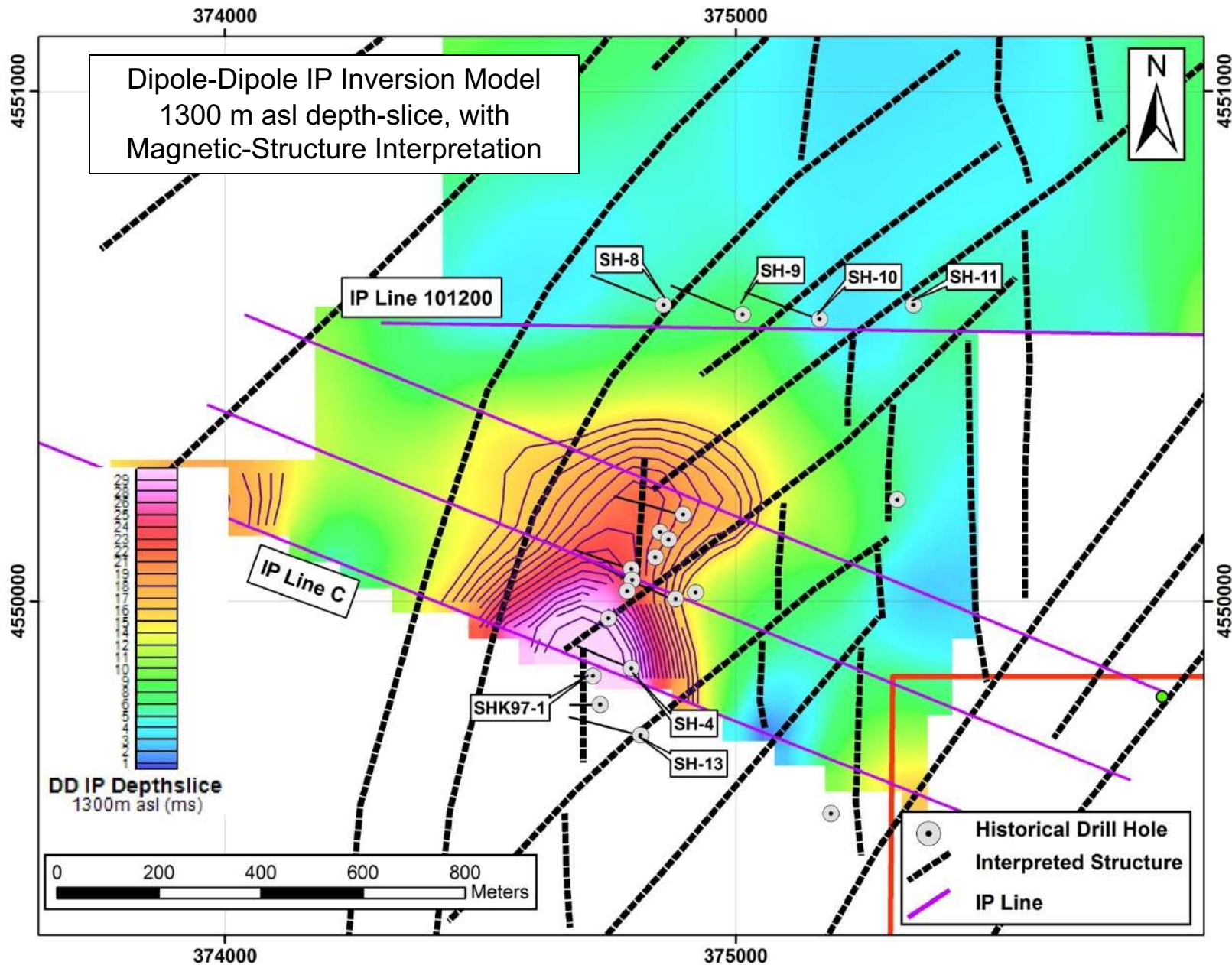
# Prospective Targets - North & Middle Areas



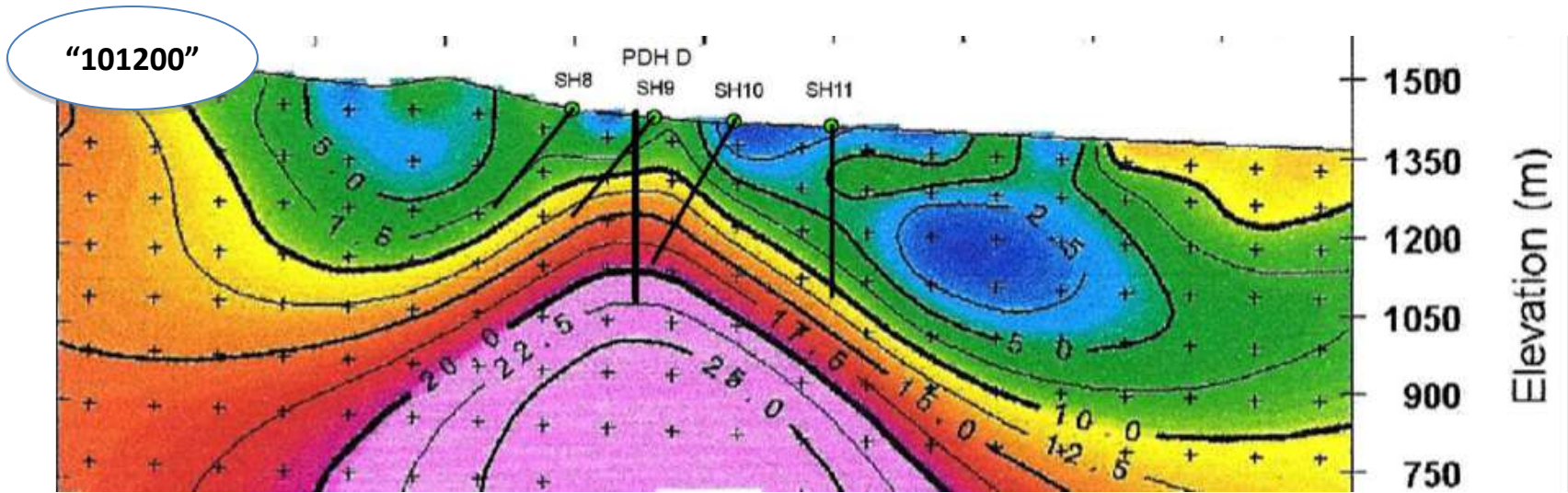
**Prospective target areas based on compilation of Au rock grab sample results, geophysical results, trench & drill hole results.**



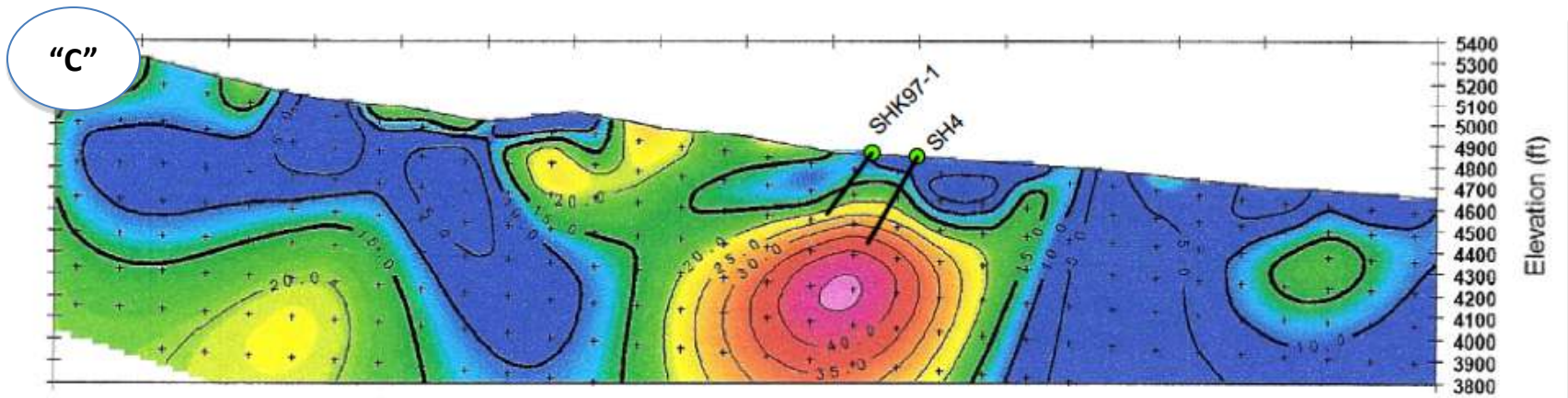
# Potential Porphyry Target – North Area



# Potential Porphyry Target – North Area



Chargeability section "101200" shows that hole SH10 stopped just short of the of the anomaly. The base of this hole had 52 m @ 90 ppb Au and 4,000 ppm As. PDH D' – Proposed Drill Hole to test the chargeability anomaly along this section line.



Chargeability section "C" shows that holes SH-4 and SHK 97-1 stopped short of testing the anomaly.





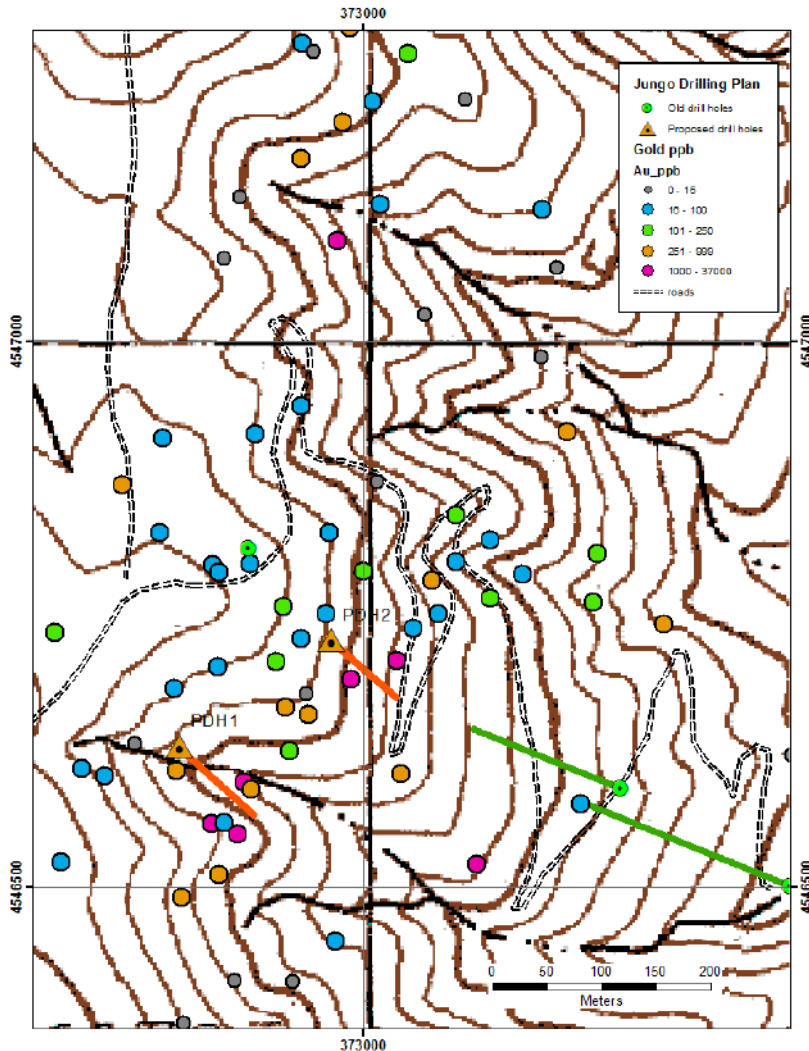
**Base of SH10: Brecciated, silicified intrusive with disseminated pyrite and stringers of arsenopyrite**



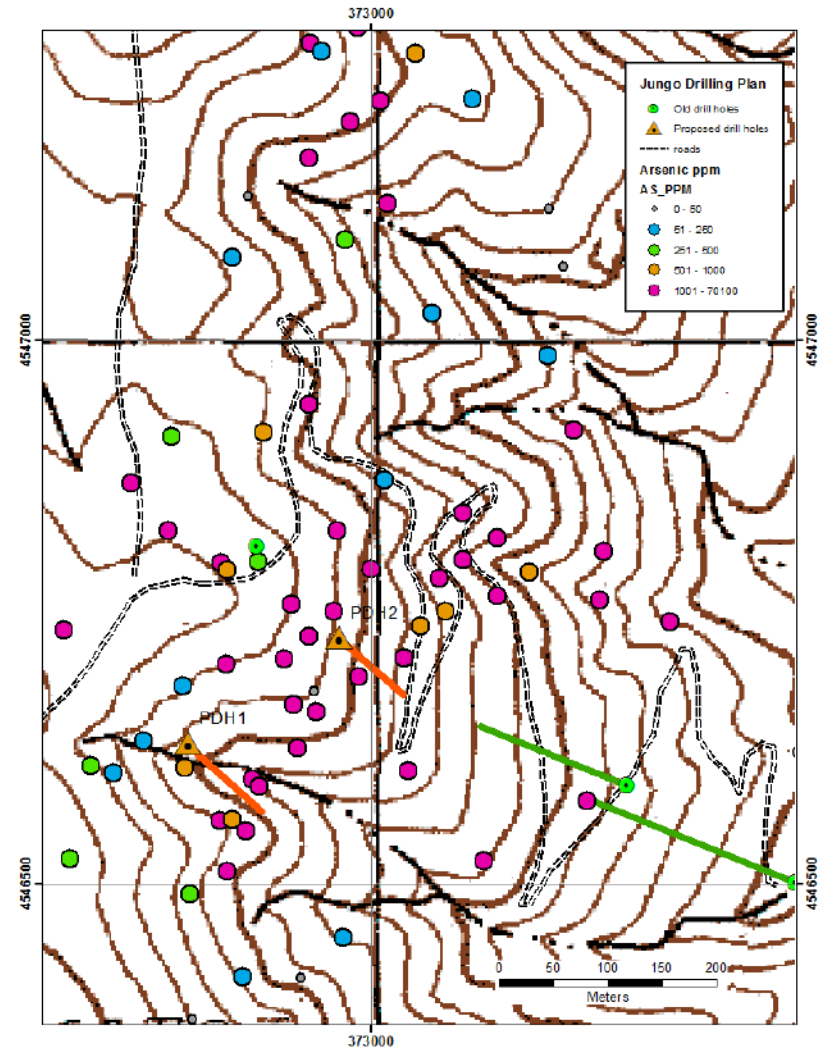


**Base of SH13: strongly silicified, with pyrite and ?stibnite**

## Au Grab Samples

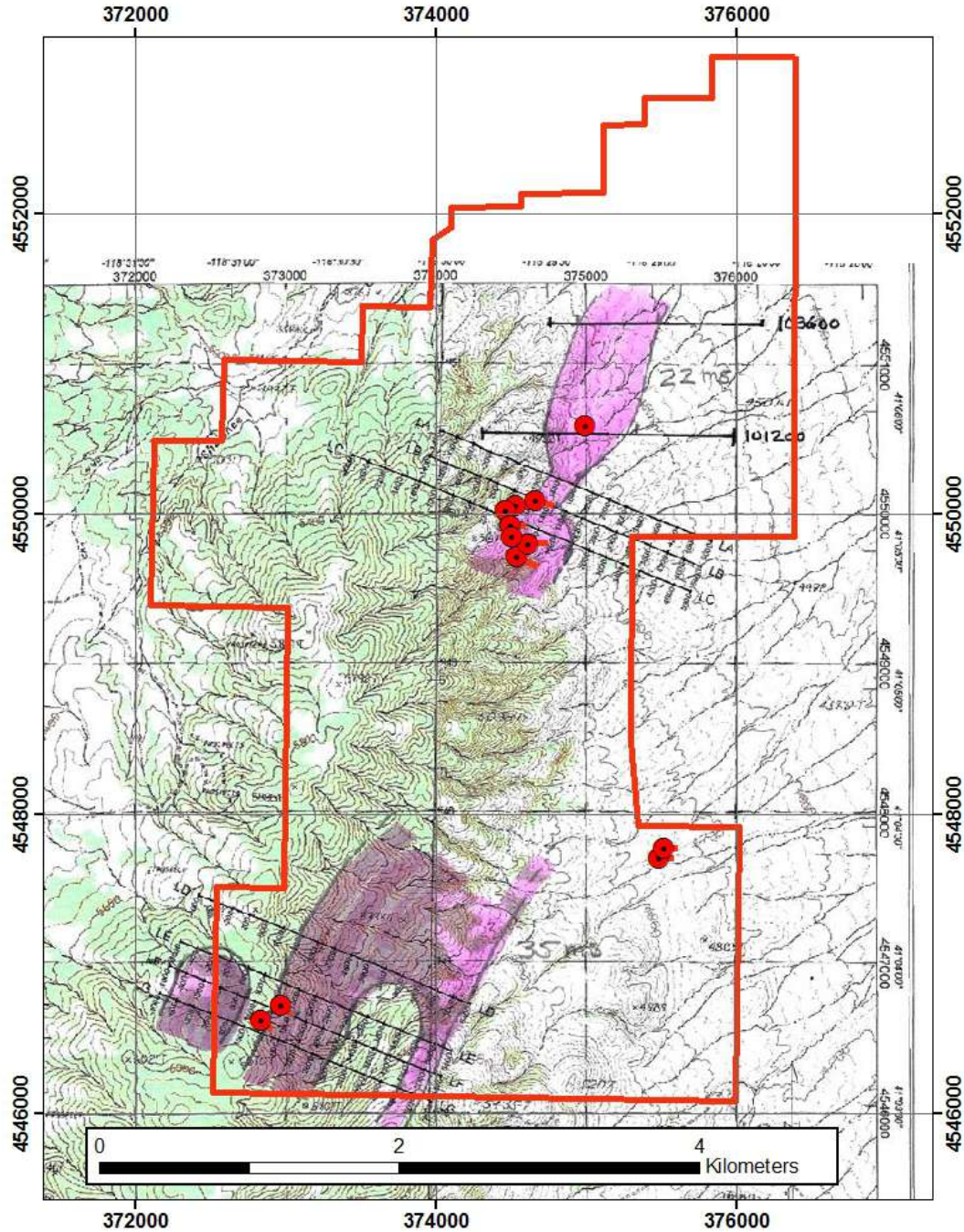


## As Grab Samples



Location of the previous drill holes in south area relative to Au/As anomalies - may have been drilled down dip - Avidian proposed holes 11 & 12 to be drilled to the NE.

# Jungo Proposed Holes, Chargeability Anomaly







- 5 km long gold-copper system with mineralization in a magmatic-hydrothermal environment controlled by NNE structures.
- Historical drilling intersected significant gold:
  - 4.27 m @ 1.67 g/t Au, 57.7 g/t Ag and 2.72% Cu,
  - 1.52 m @ 2.50 g/t Au, 71.6 g/t Ag and 0.67% Cu.
  - 12.19 m @ 1.29 g/t Au, 28.6 g/t Ag and 0.72% Cu
- Geophysics suggests the presence of sulphide in association with intrusions, and the IP data suggests multiple phases of mineralization.
- Surface samples support gold mineralization associated with sulphides with samples containing anomalous gold, silver, mercury, copper and zinc values.
- Gold assays from trenching and outcrop range from below detection to 37 g/t Au.
- Most of the historical drilling stopped short of testing their targets and may have been drilled down dip to the mineralized targets.
- Geophysical signatures coincident with Au & As mineralization and structural NNE trends.
- Many geophysical and geologic targets remain untested along the 5 km mineralized trend, with only a small fraction of this system (< 1.5 km) partially tested to date.



- Continue evaluating and compiling the wealth of historical data to further refine drill targets.
- Property-wide alteration studies using Terraspec.
- Prospecting, mapping and sampling along the mineralized corridor.
- Trenching where applicable.
- Core drill program of 8 core holes (approximately 1,600 m) to test the mineralized structures on a wide scale in the North, Middle and South target areas.



235 Claims.

Holding Cost of approx. US\$39,000 per year.

NSR: 2% on 35 claims