

GOLDEN ZONE PROPERTY, Alaska



Exploration → Discovery → Value

Cautionary Statement



This presentation ("Presentation") contains forward-looking information that involves substantial known and unknown risks and uncertainties, most of which are beyond the control of Avidian Gold Corp. ("Avidian"). Forward-looking statements include estimates and statements that describe Avidian's future plans, objectives or goals, including words to the effect that Avidian or its management expects a stated condition or result to occur. Forward-looking statements may be identified by such terms as "believes", "anticipates", "expects", "estimates", "may", "could", "would", "will", or "plan". Since forward-looking statements are based on assumptions and address future events and conditions, by their very nature they involve inherent risks and uncertainties. Although these statements are based on information currently available to Avidian, Avidian provides no assurance that actual results will meet management's expectations. Risks, uncertainties and other factors involved with forward-looking information could cause actual events, results, performance, prospects and opportunities to differ materially from those expressed or implied by such forward-looking information. Forward looking information in this presentation includes, but is not limited to, Avidian's objectives, goals or future plans, statements, exploration results, potential mineralization, Avidian's portfolio, treasury, management team and enhanced capital markets profile, the proposed private placement, the timing of the Transaction, the estimation of mineral resources, exploration and mine development plans, timing of the commencement of operations and estimates of market conditions. Factors that could cause actual results to differ materially from such forward-looking information include, but are not limited to, problems, expenses, difficulties, complications and delays frequently encountered in connection with the establishment of any business, failure to identify mineral resources, failure to convert estimated mineral resources to reserves, the preliminary nature of metallurgical test results, delays in obtaining or failures to obtain required governmental, regulatory, environmental or other project approvals, political risks, unprofitable efforts resulting not only from the failure to discover mineral deposits but also from finding mineral deposits that, though present, are insufficient in quantity and quality to return a profit from production, uncertainties relating to the availability and costs of financing needed in the future, changes in equity markets, inflation, changes in exchange rates, fluctuations in commodity prices, delays in the development of projects, capital and operating costs varying significantly from estimates and the other risks involved in the mineral exploration and development industry. There is no assurance that Avidian's mineral exploration and development activities will result in any discoveries of commercial bodies of ore. Mining exploration requires ready access to mining equipment such as drills, and crews to operate that equipment. There can be no assurance that such resources will be available to Avidian on a timely basis or at a reasonable cost. Unusual or infrequent weather phenomena, sabotage, or other interference in the maintenance or provision of infrastructure required for mineral exploration could adversely affect Avidian's operations, financial condition and results of operations. The further development and exploration of Avidian's projects depends upon Avidian's ability to obtain financing through equity financing, joint ventures, debt financing, or other means. There is no assurance that Avidian will be successful in obtaining required financing as and when needed. There is no guarantee that Avidian's title to such properties will not be challenged or impugned or that the appropriate permits and approvals will be obtainable on reasonable terms or on a timely basis; the licenses will be renewed upon their expiry; and that Avidian will be able to explore its properties as permitted or to enforce its rights with respect to its properties.

Although Avidian believes that the assumptions and factors used in preparing the forward-looking information in this presentation are reasonable, undue reliance should not be placed on such information, which only applies as of the date of this Presentation, and no assurance can be given that such events will occur in the disclosed time frames or at all. Avidian disclaims any intention or obligation to update or revise any forward-looking information, whether as a result of new information, future events or otherwise, other than as required by law.

The technical information contained in this presentation has been verified and approved by Dino Titaro and Tom Setterfield who are registered as a P.Geo in Ontario and a "Qualified Person" for the purpose of National Instrument 43-101, Standards of Disclosure for Mineral Projects of the Canadian Securities Administrators.

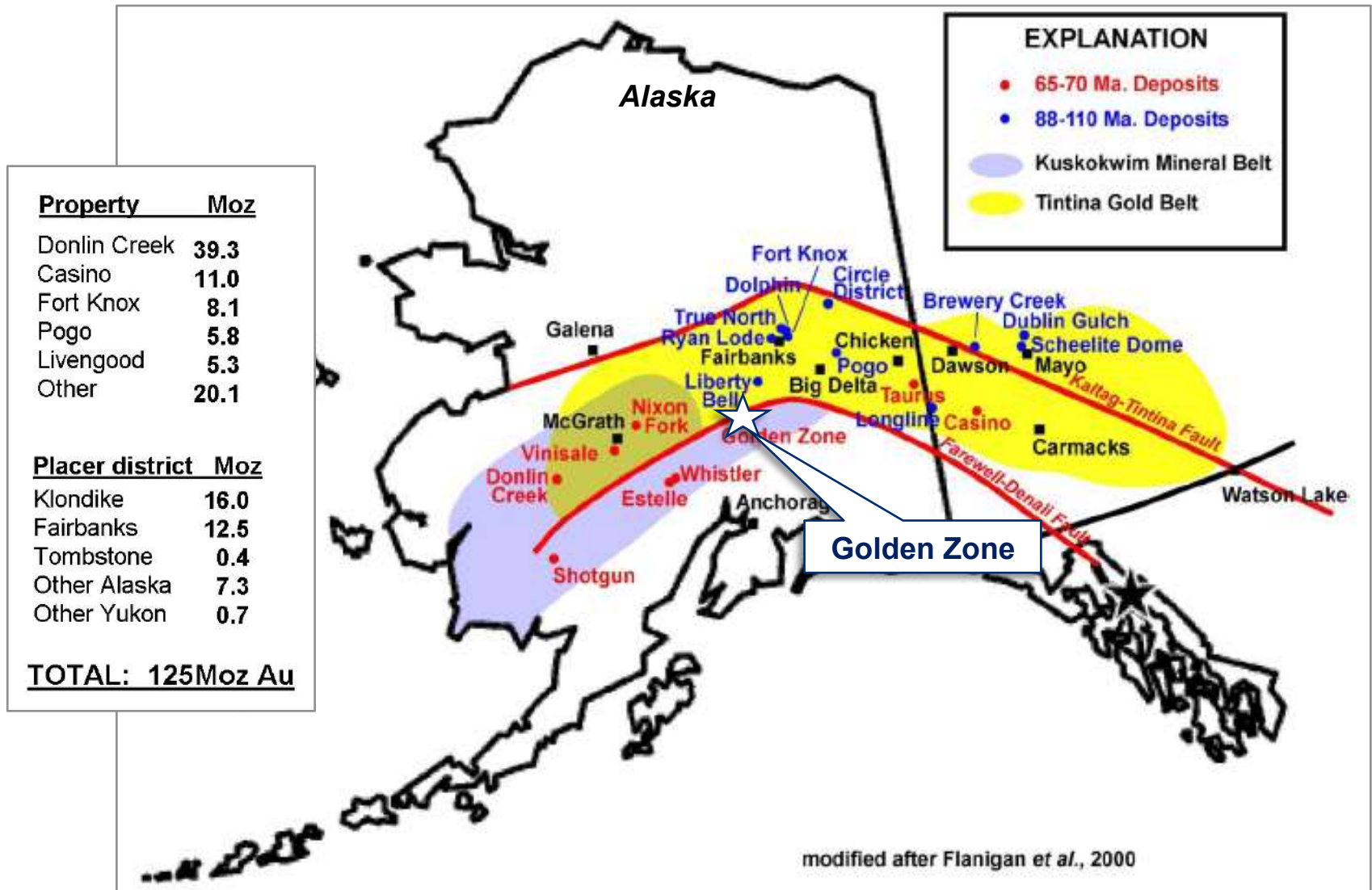
Notice to Canadian Residents

The Presentation is not, and under no circumstances are to be construed as, an advertisement or a public offering of the securities referred to herein. The Presentation is not an offer to sell securities of Avidian and is not a solicitation of offers to purchase these securities where the offer or sale is not permitted. No securities commission or similar authority in Canada has reviewed or in any way passed on the merits of the securities described herein and any representation to the contrary is an offence. No person has been authorized to give any information or to make any representation other than as provided for herein.

Notice to U.S. Persons

The Presentation is not, and under no circumstances are to be construed as, an advertisement or a public offering of the securities referred to herein. The Presentation is not an offer to sell any securities of Avidian and is not a solicitation of offers to purchase these securities where the offer or sale is not permitted. No securities commission or similar authority in United States has reviewed or in any way passed on the merits of the securities described herein and any representation to the contrary is an offence. No person has been authorized to give any information or to make any representation other than as provided for herein. U.S. investors are advised that the terms "inferred" and "indicated" resources are recognized and required by Canadian regulations, however the U.S. SEC does not recognize the terms. U.S. investors are cautioned not to assume that any part or all of mineral deposits in these categories would ever be converted to reserves.

- 100% interest, 59 sq km in area; located in the Tintina/Kuskokwim Mineral Belt of Alaska.
- Late Cretaceous, Intrusion Related Gold System. Direct geological & mineralization Au analogs are the 39.3 Moz Donlin Creek Deposit and the 6.3 Moz Dublin Gulch property.
- Three major mineralized corridors, the Permo-Triassic age “Golden Zone” and “Long Creek” corridors, and the Jurassic age “Silver Dikes” corridor.
- The +4 km long “Golden Zone” Corridor hosts several high grade Au occurrences (**> 5 g/t Au to + 25 g/t Au** with Ag and Cu) and the Breccia Pipe Deposit that is a multi-element deposit with a NI 43-101 Indicated Resource of 267,400 oz Au plus 1,397,800 oz Ag and an Inferred Resource of 35,900 oz Au plus 111,400 oz Ag, and remains open.
- The +2 km long Long Creek Corridor hosts 3 known occurrences of high grade Au-Cu vein systems, (**i.e. 13.72 m @ 7.01 g/t Au, 94.1 g/t Ag & 4.0 % Cu**), that may relate to a larger underlying porphyry system.
- Extensive database, over 26,700 m of drilling, underground workings, 6,600 m of trenching and underground channel sampling, geochemical surveys & airborne and ground geophysical surveys, worth in excess of US \$25 million.
- Previous work on the property was intermittent with numerous targets identified but not followed up after start and stop programs with little to no view as to the mineralization style on a “property scale” and the implications for a large deposit.

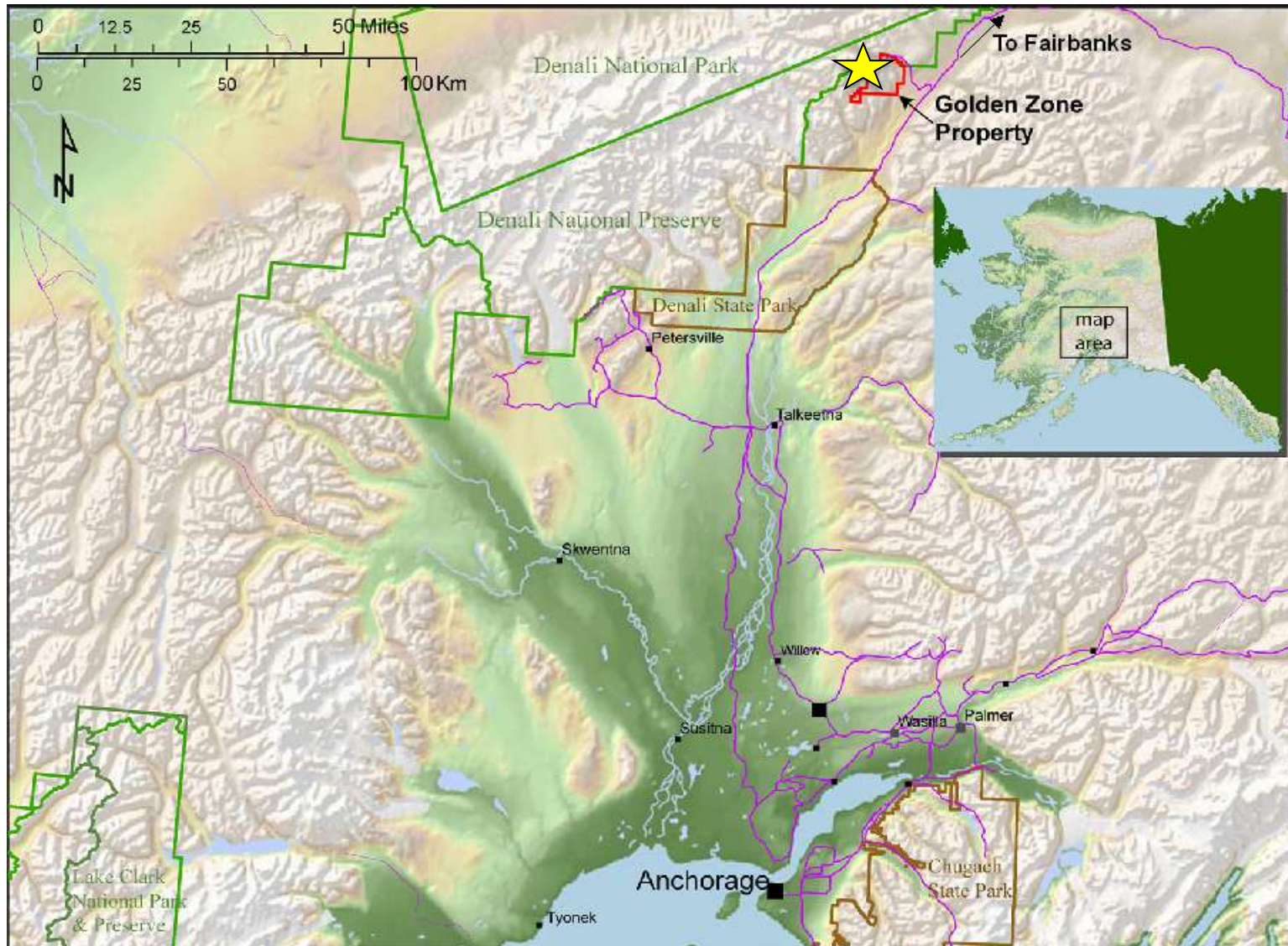


Distribution of Au deposits in the Tintina & Kuskokwim Mineral Belts



- Approximately 320 km north of Anchorage, and 16 km west of the main transportation corridor between Anchorage and Fairbanks:
 - the George Parks Highway (Alaska Highway 3)
 - the Alaska Railroad
 - the 345-Kv Alaska Intertie
- 14,560 acres, comprised of a 2,960 acre Uplands Mining Lease, 11,600 acres of State of Alaska Claims and a non-contiguous 40 acre Mill Site Lease.
- Year-round gravel road for access from a wholly owned staging area, with a seasonal pioneer road to the property.
- The core of the property hosting the known occurrence/deposit is situated with Upland Mining Lease, which was established in 1995 with a 55 year term – 32 years remaining.
- Property elevation ranges from 600 m to 1,200 m asl.
- Facilities on the property include a permanent 25-man camp with several buildings, 3 large generators, several 4 X 4 vehicles and an airstrip.

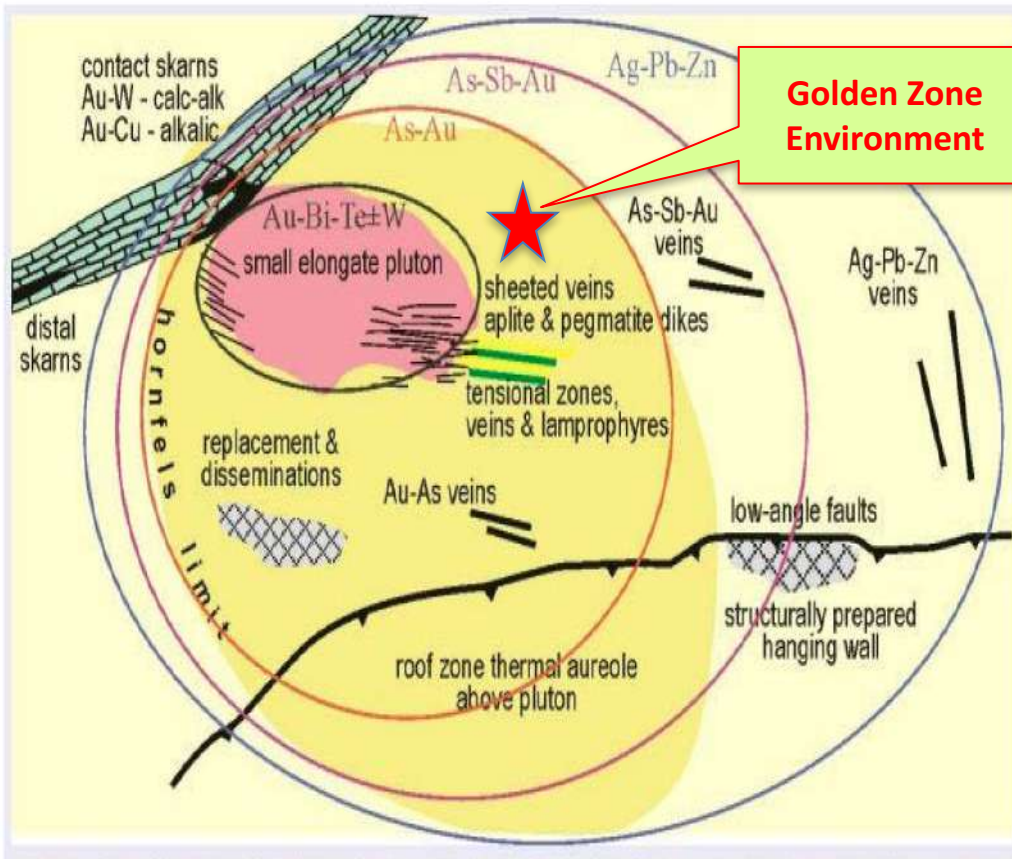
Property Location



Excellent Infrastructure and easily accessible, 320 highway km north of Anchorage

- 1907 to 1915 - initially discovered in 1907 - short underground workings driven on the Breccia Pipe Zone.
- 1929 to 1942 – development of the Breccia Pipe Zone (Asarco, Golden Zone Mines Inc.) with minor production in 1941 and closed due to WW II and remained idle to 1971.
- 1972 to 1988 – several companies worked on the property (Inspiration Development, Ranchers Exploration, Homestake Mining, Ensearch Corp, Golden Zone Resources, United Pacific) completing drilling, geologic mapping, geophysics, and geochemistry.
- Financial problems and eventual bankruptcy incurred by United Pacific on the property – several lawsuits and liens.
- In 1992 Mines Trust Co. was organized to acquire the property subject to a first deed of trust and subject to their satisfying certain obligations which they met and obtained title to the property.
- 1994 to 1999 - Addwest Minerals completed drilling, mapping & sampling, resource estimate on the Breccia Pipe, preliminary metallurgical test work and data compilation. Dropped in 1999 due low metal prices and returned to Mines Trust.
- 2002 to 2005 – Mines Trust and Hidefield Gold owned the property 60:40 and completed a new resource estimate along with drilling, trenching, sampling and geophysics. In 2006 Hidefield taken over by Minera IRL and work on the property stopped.
- 2009, River Gold optioned the property, but returned it in 2010 because project commitments elsewhere.
- 2011 to 2013 – Alix Resources option the property - completed a NI 43-101 technical report along with some additional drilling, soil surveys and stream sediment sampling, refurbished the camp and built an airstrip - earned a 51% interest in the property with Mines Trust retaining a 19.6% interest and Hidefield a 29.4% interest.
- Due to weak resource market, Alix optioned their 51% interest to Chulitna Mining Company in 2014.
- 2016 – AVD recognizes property potential - numerous targets identified in historical data and not followed up - enters into a purchase agreement with Chulitna & Mines Trust & purchases Hidefield's 29.4% interest outright for a total 100% interest.

Intrusion-hosted proximal distal



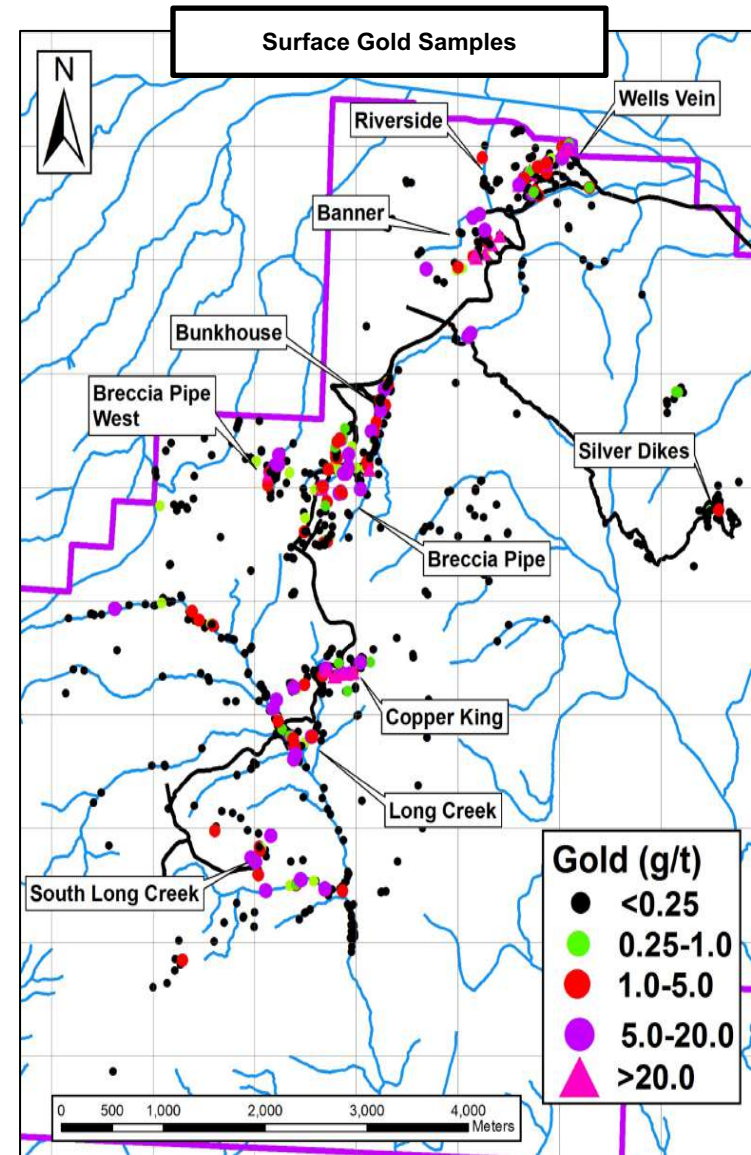
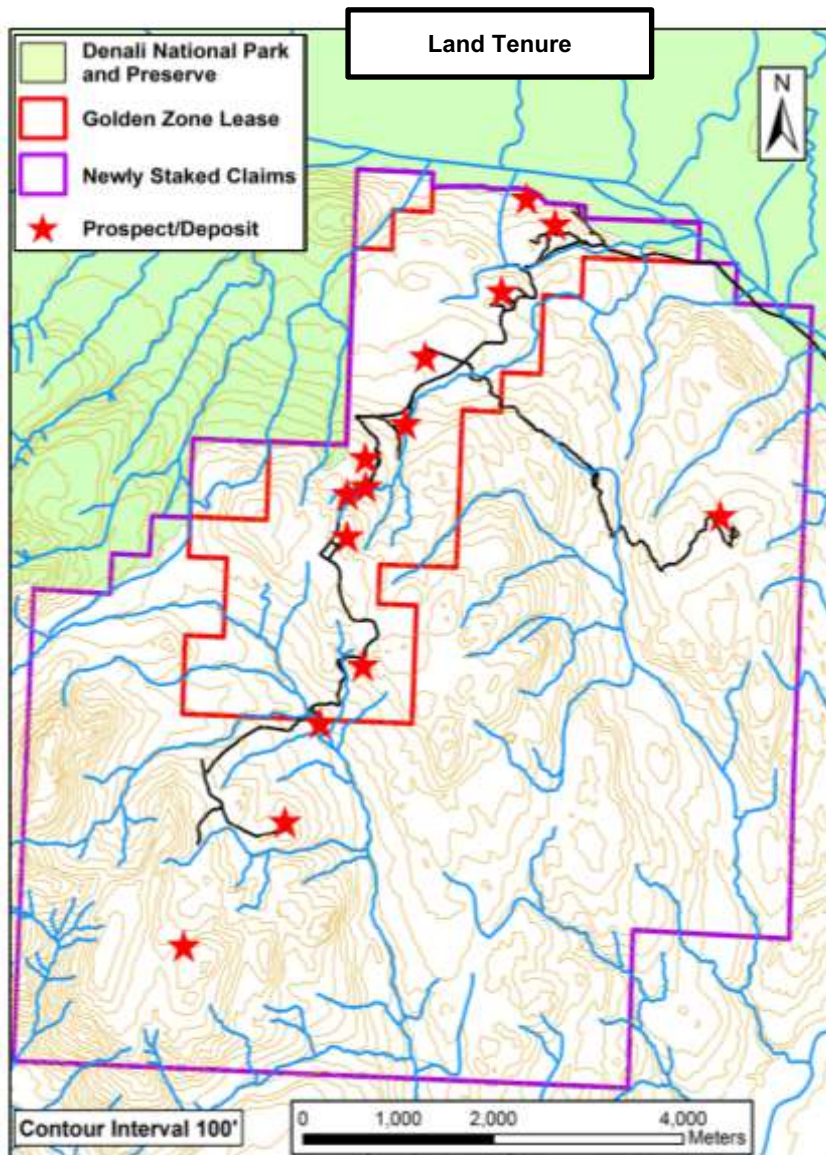
Golden Zone Environment

Golden Zone Property Features

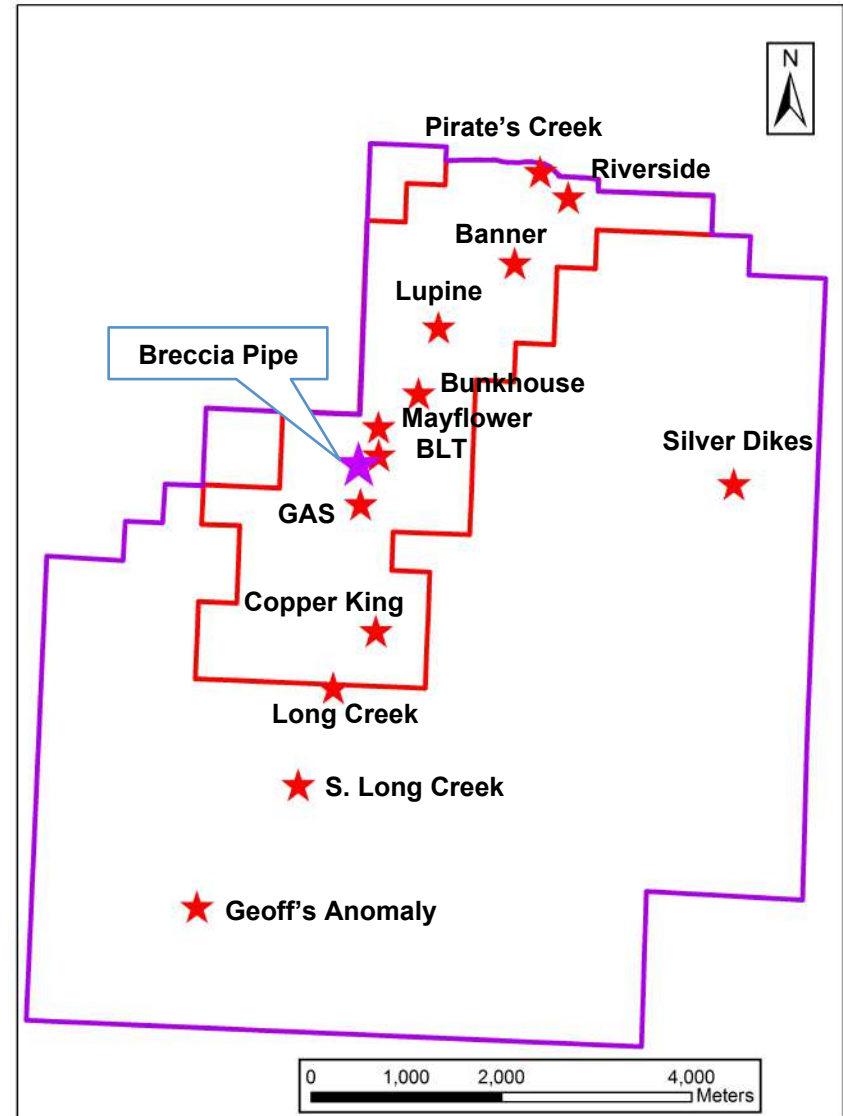
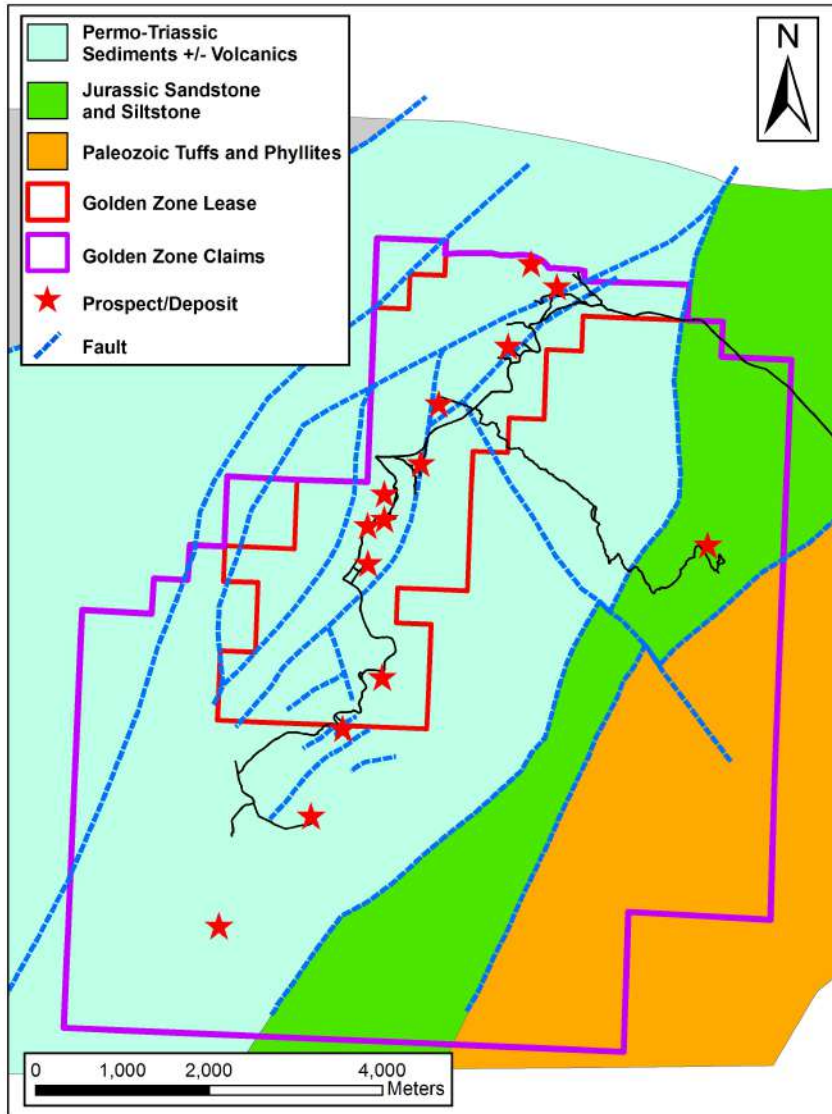
- Mineralization is derived from a magmatic-hydrothermal process fully compatible with models for an Intrusion Related Gold System.
- Formed in a proximal environment & likely at a relatively shallow paleodepth.
- Exhibits a relationship with mineralized intrusions and elevated Au & pathfinder elements (As, Bi, Te).
- Mineralization style is 1) large quartz or quartz-carbonate veins with arsenopyrite and 2) smaller veinlets which form stockworks with associated breccias.
- The known high-grade Au-As veins and Cu-Au veins are proximal to and/or vertically above possible intrusion-hosted sheeted vein deposits similar to Fort Knox (+ 8 Moz) and Dublin Gulch.
- Geological and exploration Au analogues include Donlin Creek, Alaska (39.3 Moz) and Dublin Gulch, Yukon (6.3 Moz).

General Plan Model of the Tintina Gold Province showing range of mineralization styles & geochemical variations outward from a central pluton.

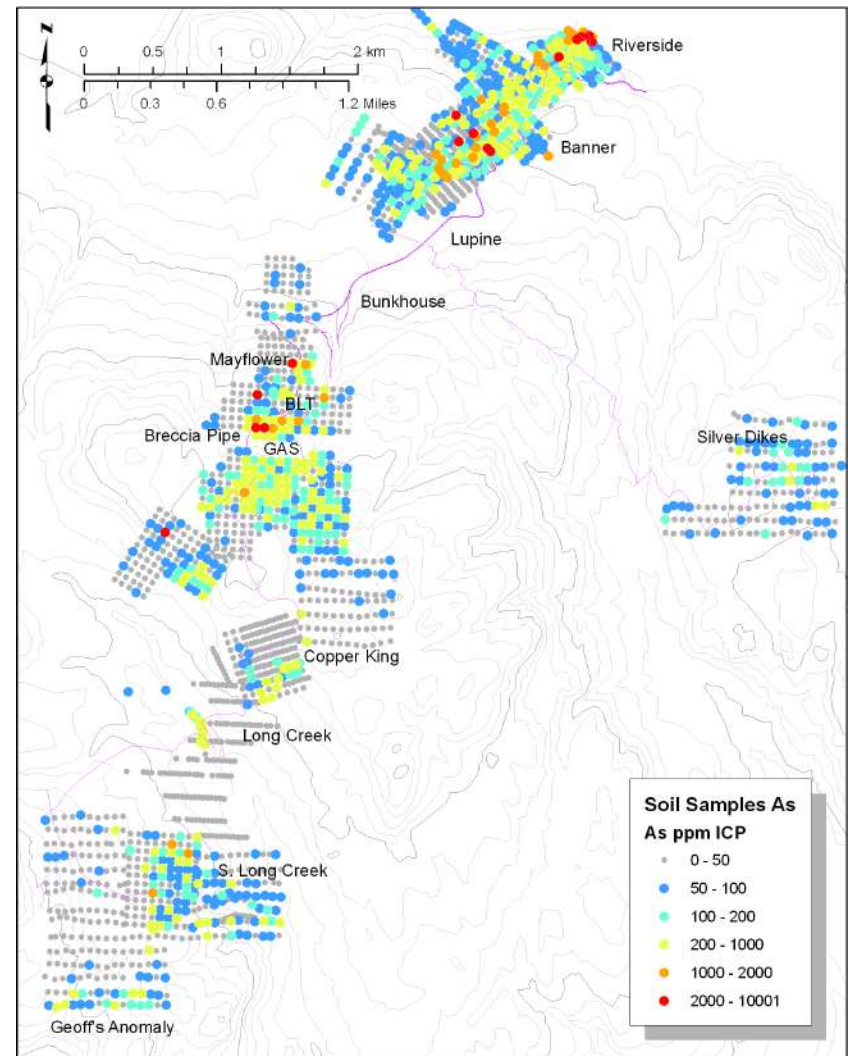
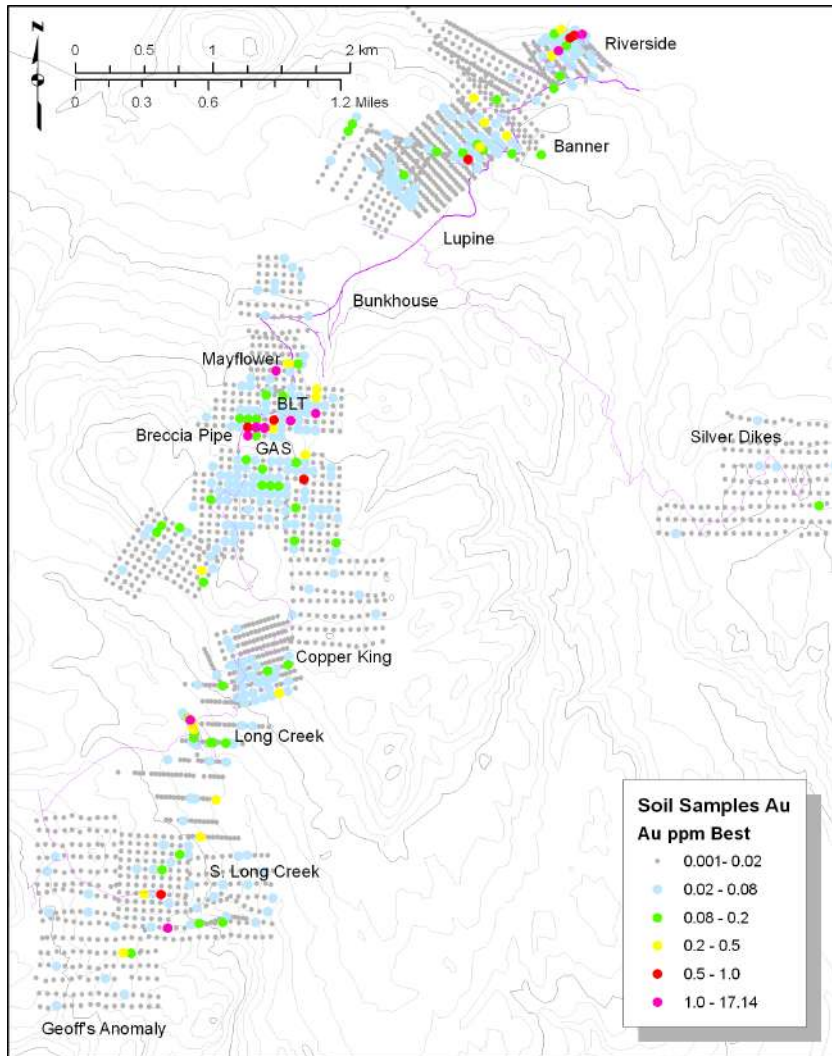
Land Tenure Map & Au Distribution



Property Geology & Prospects/Deposits

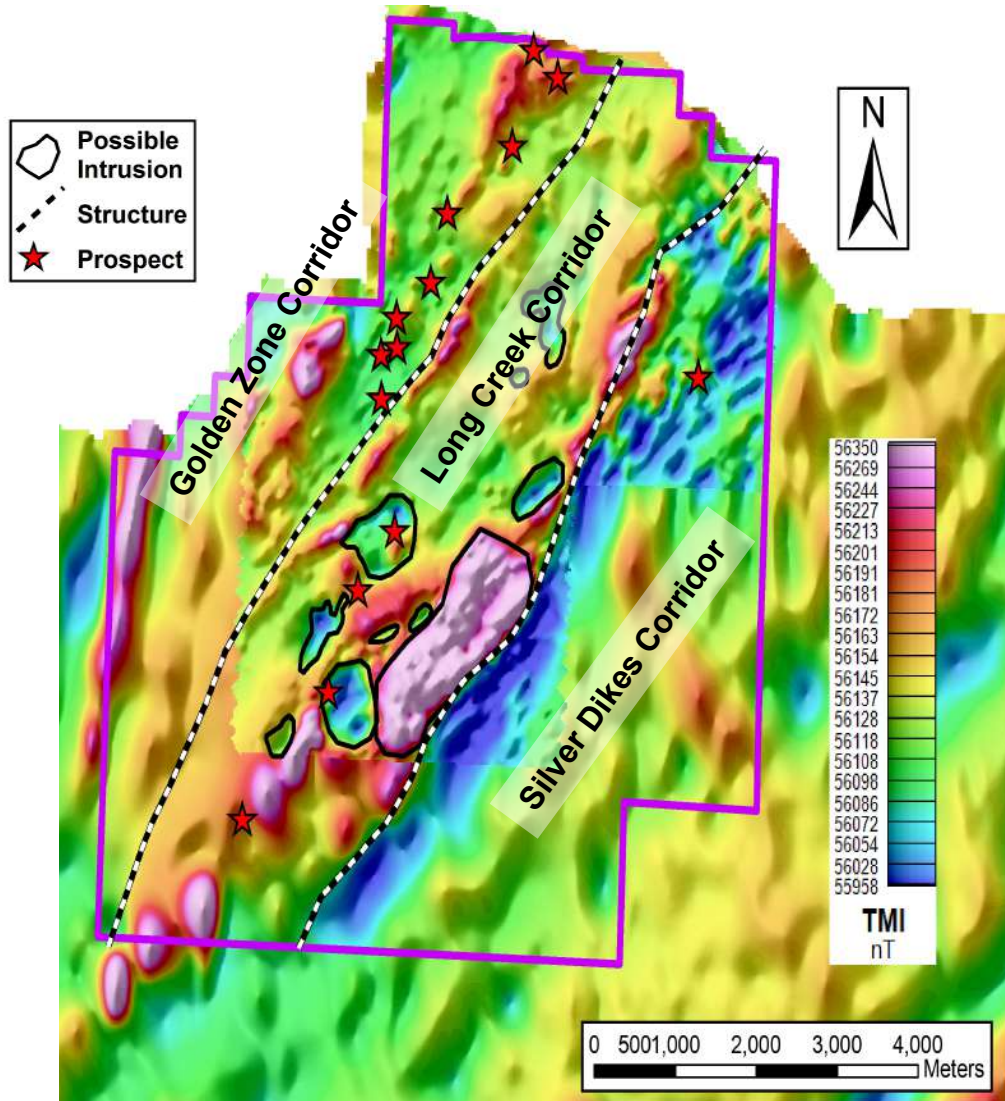


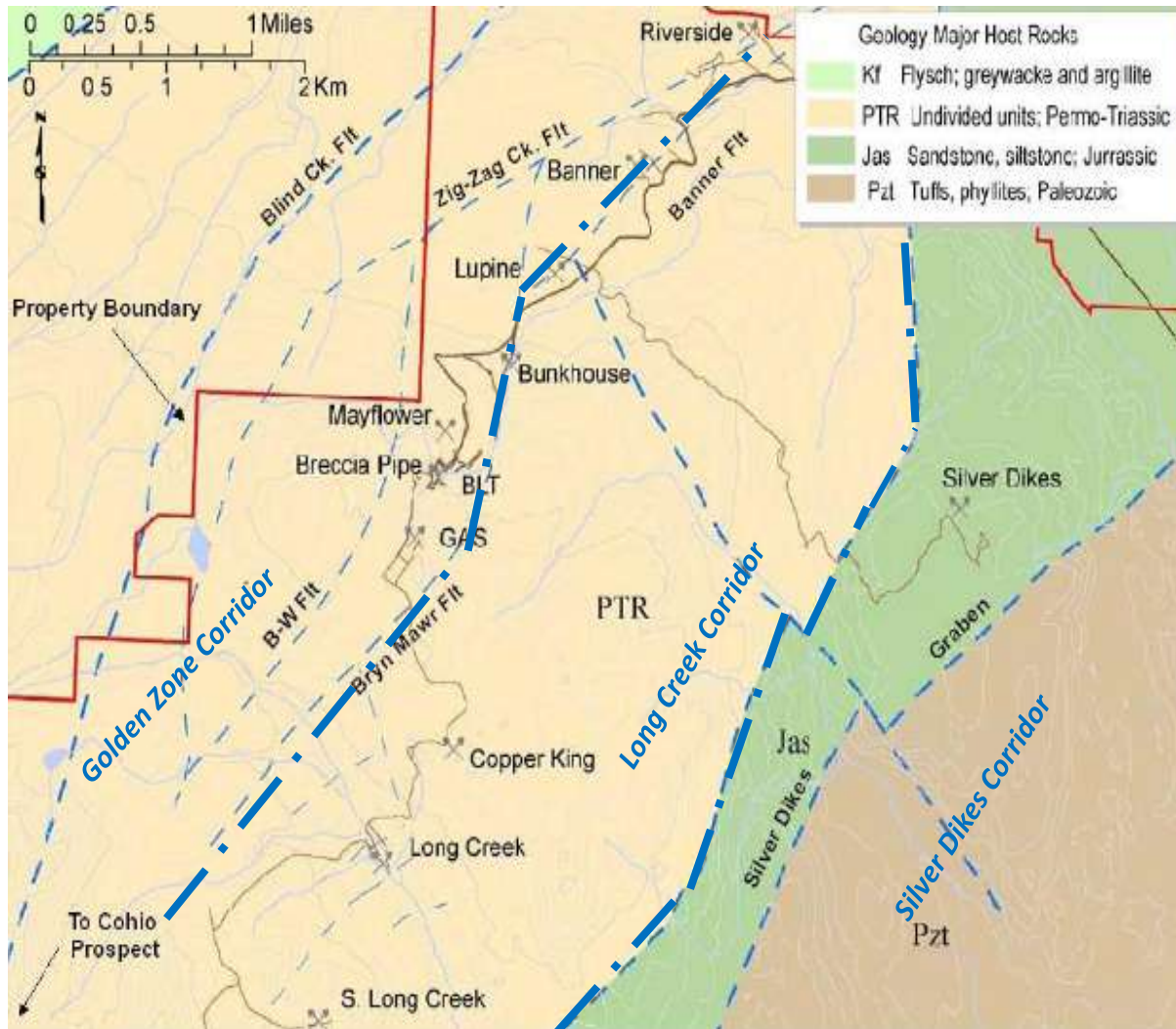
Historical Au & As Soil Samples



Arsenic has a direct correlation with gold mineralization on the property.

Prospects/Deposits sit within Major Structural Corridors





Golden Zone Corridor (> 4 km long)

- Skarns, carbonate replacements, vein, shear zones & breccia pipe mineralization.
- Typified by Au-Ag-As-Bi-Sb ± Zn, Cu, Pb

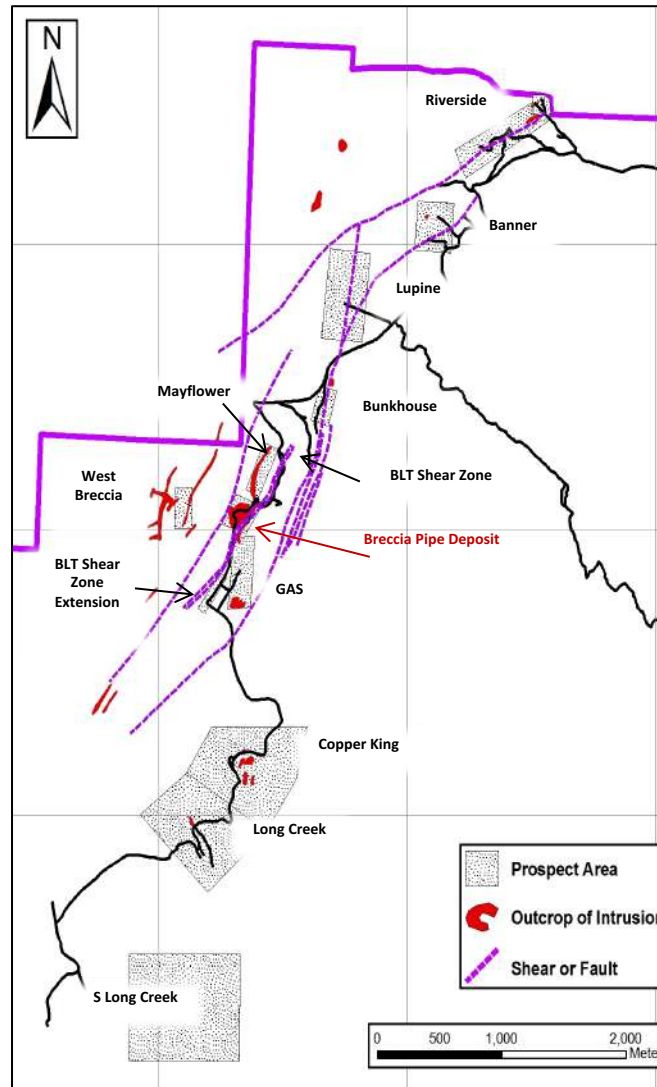
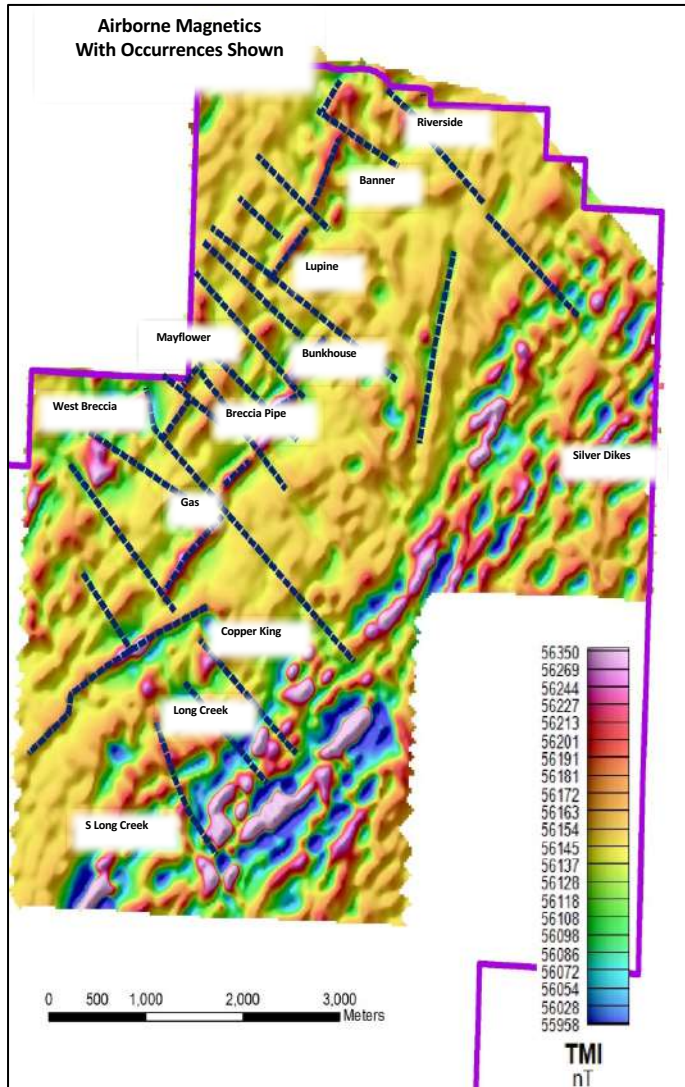
Long Creek Corridor (> 2 km long)

- Skarn, carbonate replacement, stockwork porphyries.
- Typified by Ag-Cu-Au-Bi

Silver Dikes Corridor

- Veins, shear zones associated with granitic dikes.
- Typified by Ag-Bi-Pb-Zn & Sn

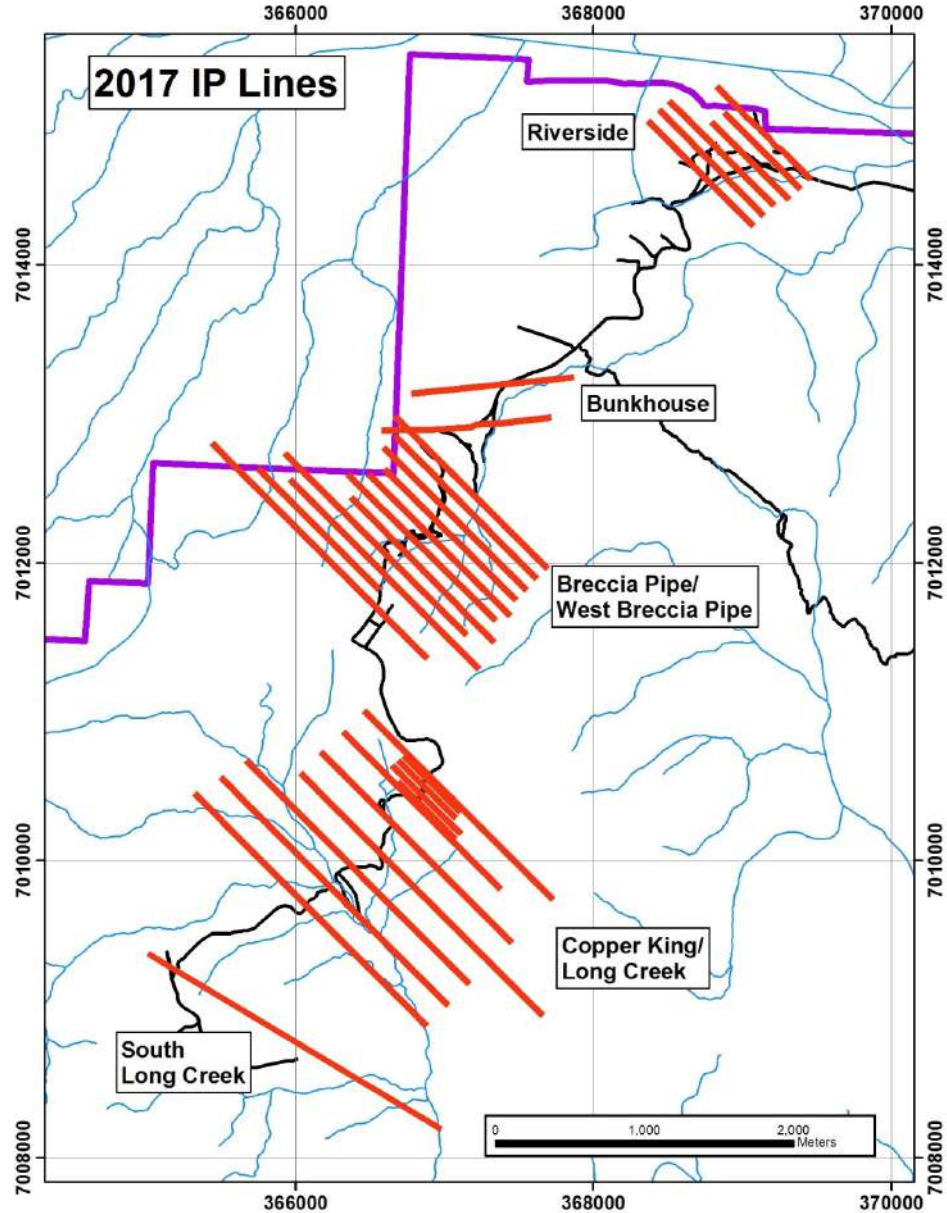
Mineral Occurrences Spatially Related to Magnetic & Structural Features



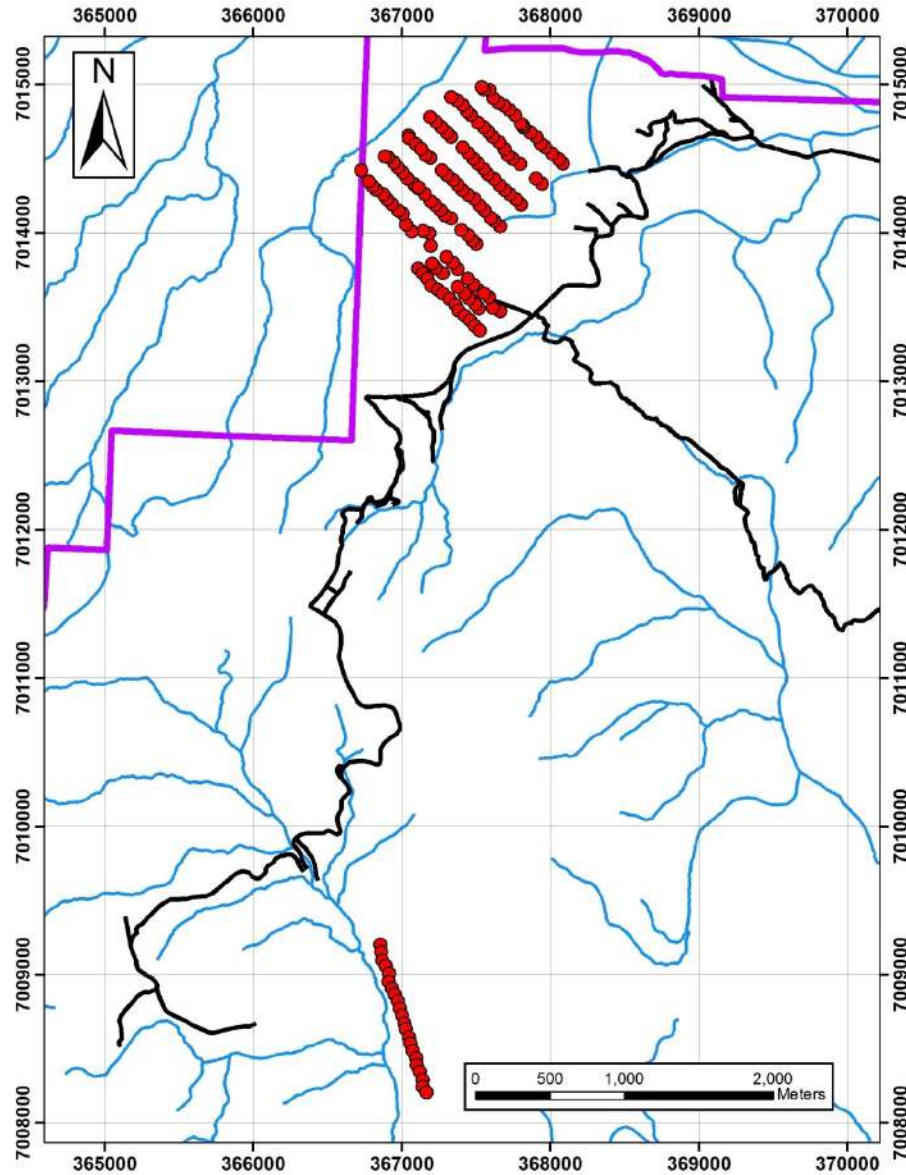
2017 Work program

- Historical work compilation, includes reviewing selected historical core drilling, primarily in the Breccia Pipe Deposit
- 43 line km of IP surveys, focused at Riverside, Breccia Pipe area and Copper King to S Long Creek
- Mapping, reconnaissance prospecting, rock sampling & soil sampling
- + 2,500 m of core drilling – Breccia Pipe peripheral mineralization and at Riverside

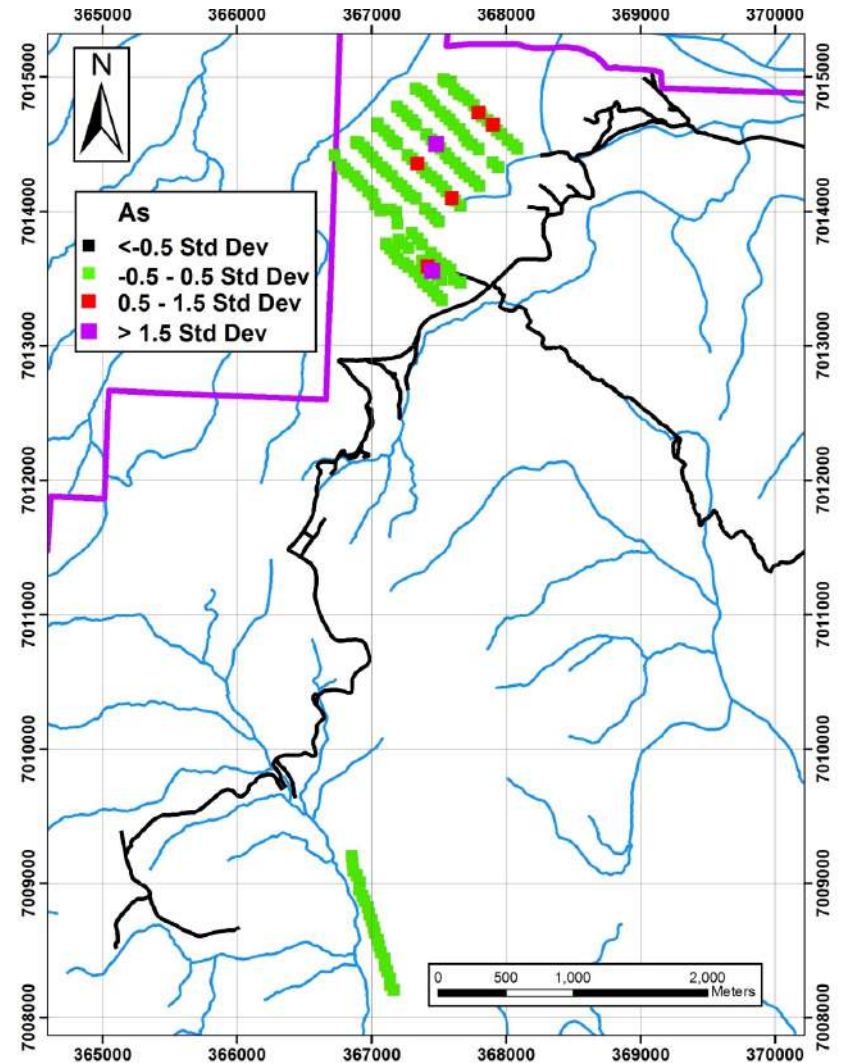
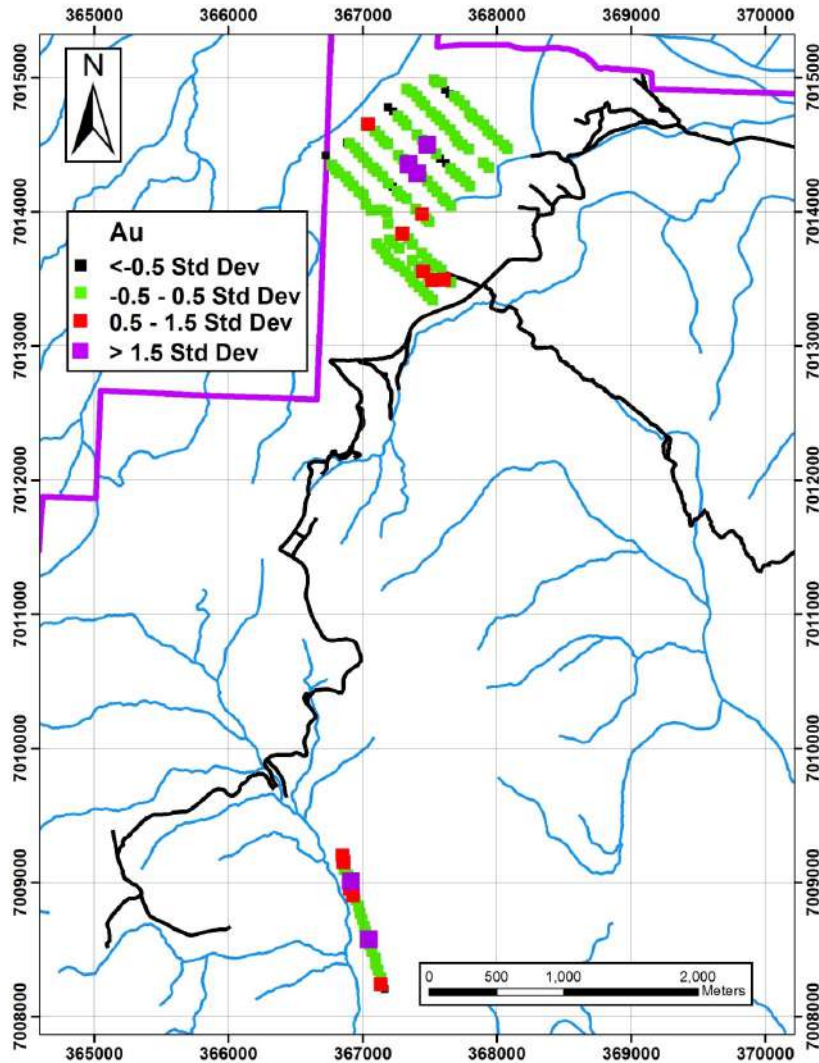
2017 IP Survey Locations



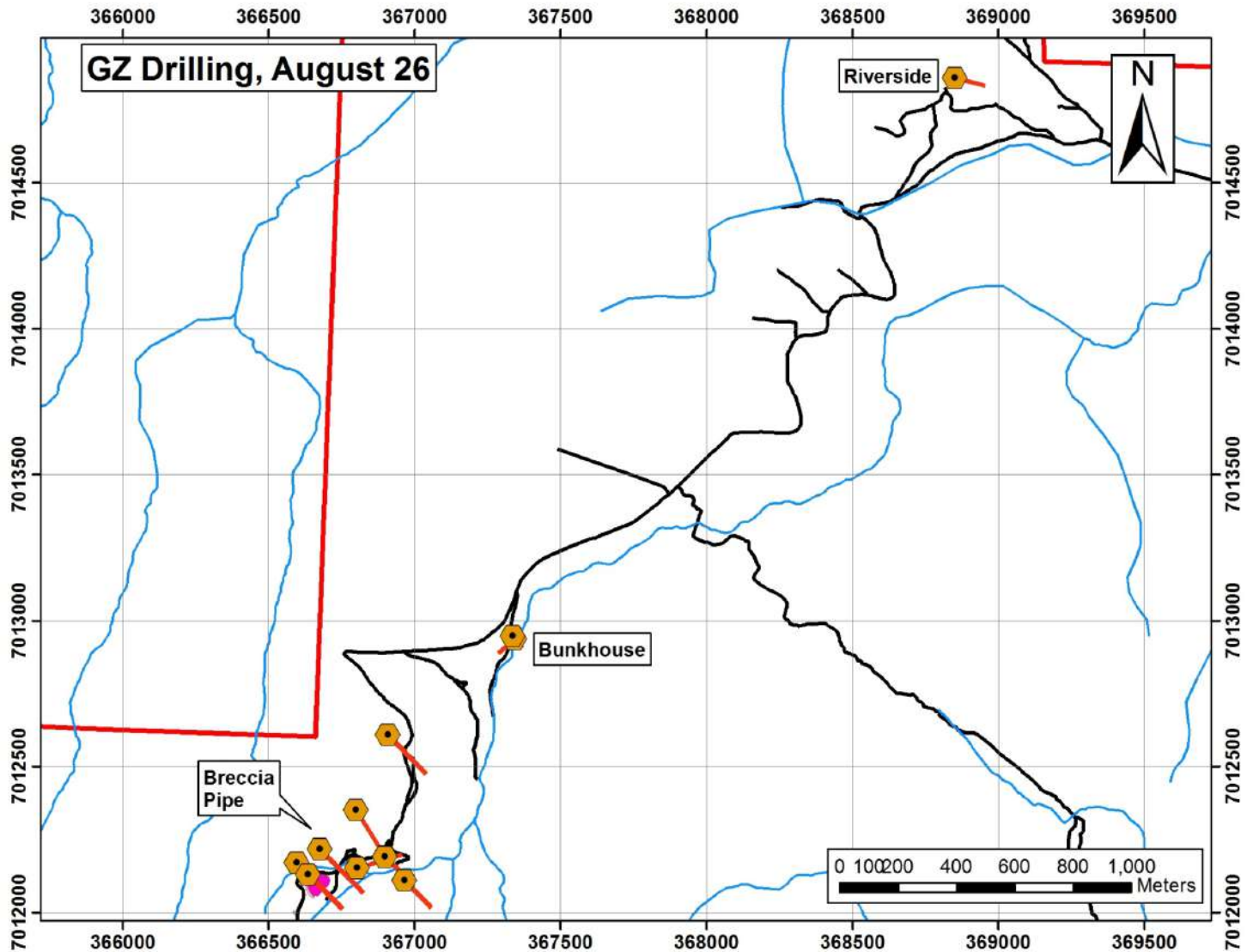
2017 Soil Sample Locations



2017 Soil Au & As Results



2017 Drill Hole Locations

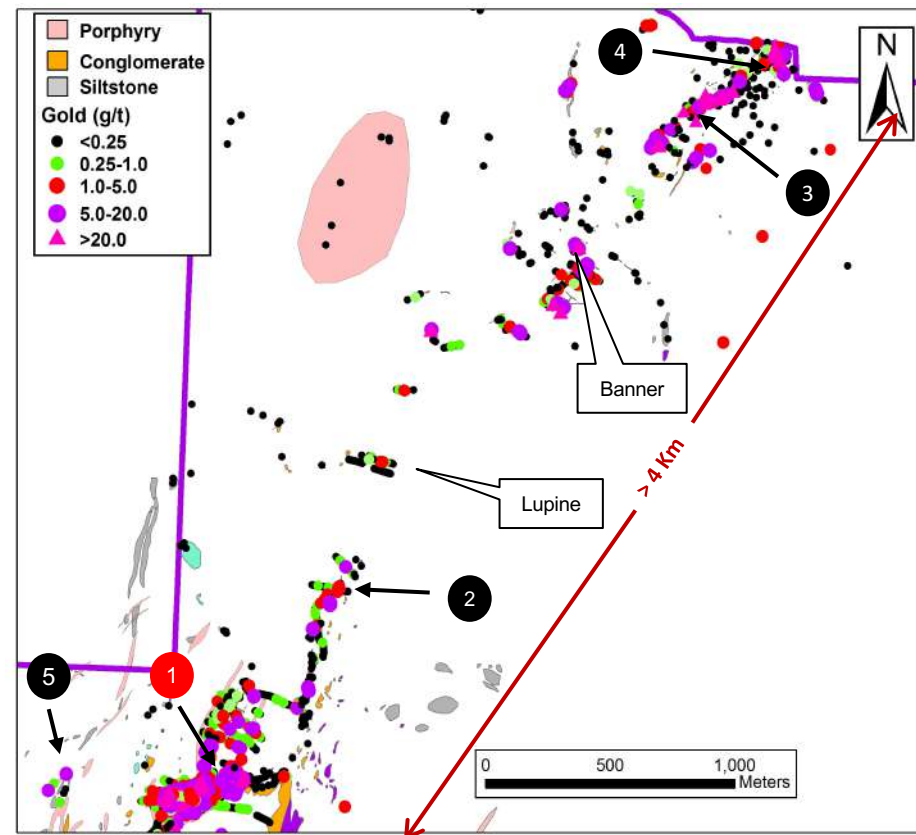


1 Breccia Pipe Deposit*

Category	Deposit Type	Tonnes	Au		Ag	
			Grade (g/t)	Ozs	Grade (g/t)	Ozs
Indicated	Porphyry	1,811,000	0.89	52,200	3.2	186,300
	Silica Breccia	369,000	0.93	11,100	8.64	102,500
	Sulphide	2,007,000	3.17	204,300	17.19	1,109,000
	TOTAL	4,187,000	1.99	267,400	10.38	1,397,800
Inferred	Porphyry	142,000	0.75	3,400	1.84	8,400
	Shear Zone	1,216,000	0.83	32,600	2.65	103,400
	TOTAL	1,353,000	0.83	35,900	2.56	111,400

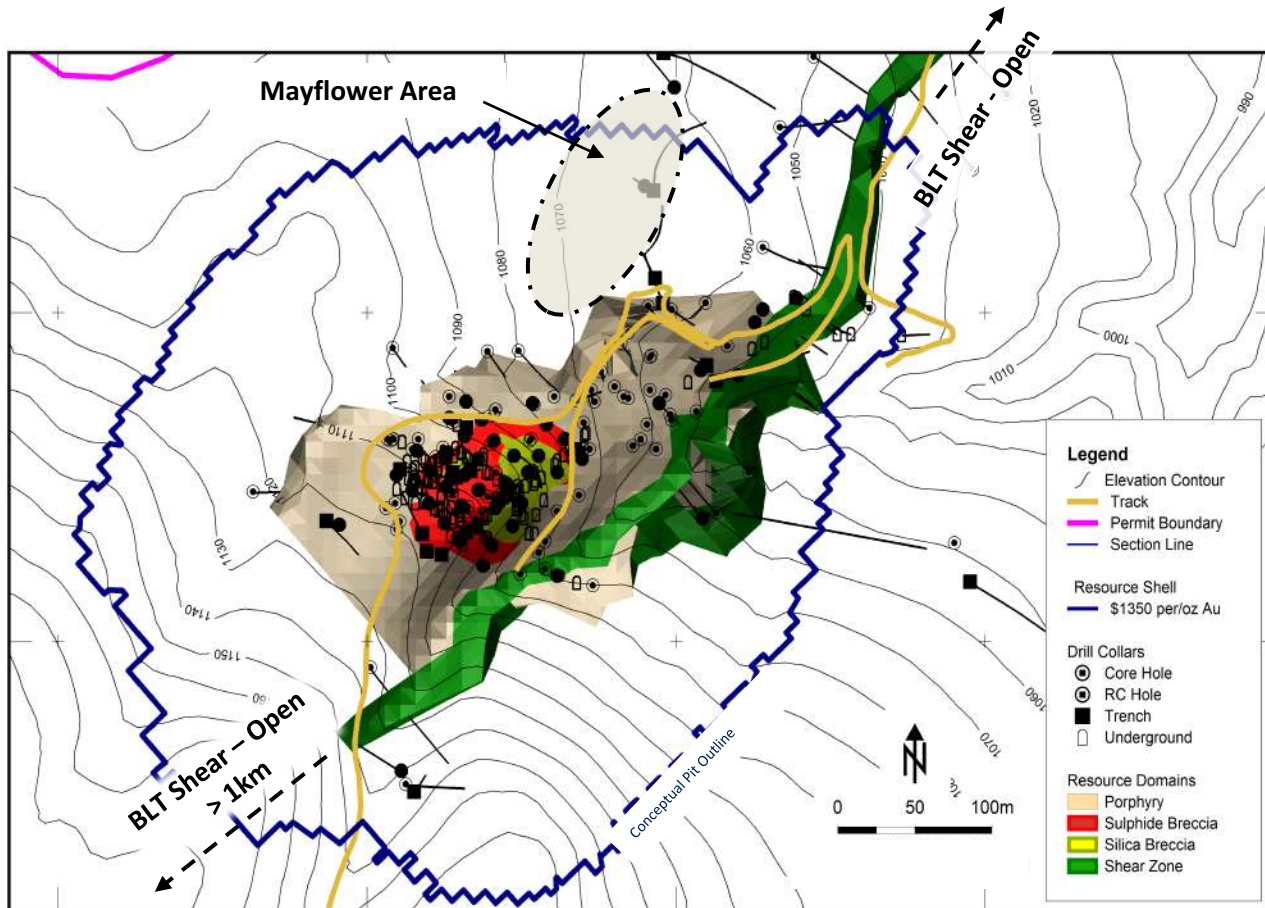
Other Prospects and Significant Results

- 2 Bunkhouse: 22.9 m @ 2.8 g/t Au
- 3 Riverside: 177.5 g/t Au, 10 g/t Ag and 0.11% Cu (***New Drill hole***: 3.4 m @ 4.23 g/t Au (includes 1.0 m @ 12.2 g/t Au))
- 4 Wells Vein: 5.95 m @ 6.7 g/t Au, 7.6 g/t Ag, 0.8% Cu
- 5 West Breccia Pipe (***New Discovery***): 14.64 g/t Au, 355 g/t Ag, 4.49% Pb, 3.68% Zn



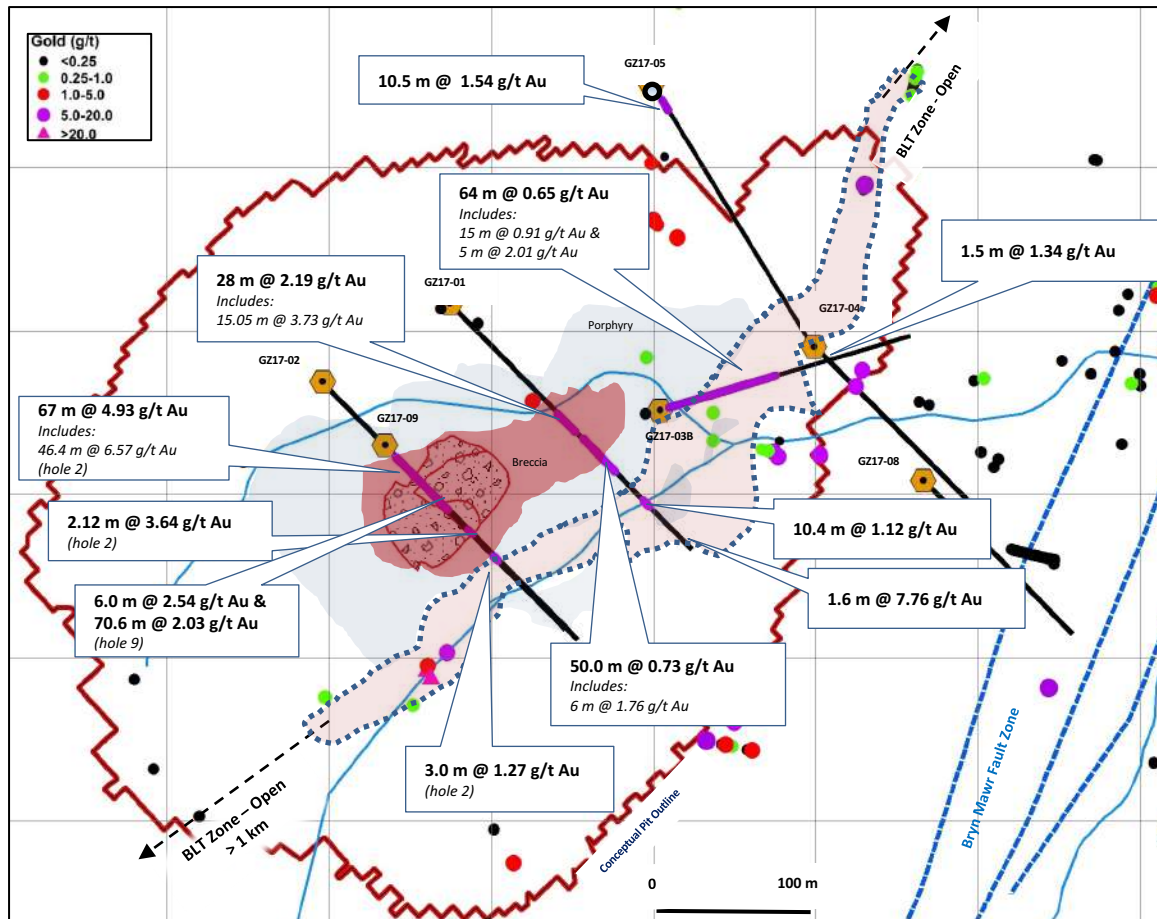
Nov. 2016. Amenable to open-pit mining (3.6 strip ratio). Conventional milling and processing. Base metals not analyzed. Whittle shell generated using a \$1,350/oz gold price 0.5 g/t Au cut-off. Assay capping values for gold: Porphyry- 20 g/t Au, Silica Breccia- 25 g/t Au, Sulphide Breccia- 35 g/t Au, Shear Zone- uncapped; & for silver values: Porphyry- 60 g/t Ag, Silica Breccia- 130 g/t Ag, Sulphide Breccia- 200 g/t Ag, Shear Zone- 40 g/t Ag.

Ability to Expand Resource



- Host Porphyry mineralization –
 - not fully drilled out
- BLT Shear Zone mineralization –
 - open internally and along strike: can be traced to the southwest > 1 km
- Mayflower Trend:
 - 6.10 m @ 8.31 g/t Au, 54.2 g/t Ag (trench): sparsely drill tested not fully evaluated (not in the current resource)





• Note: Drill Intersections are core length.

DDH GZ17 – 01, 02 & 09:

- Test edges of the Breccia Pipe
- Test the monzodiorite/porphyry host for additional mineralization, plus BLT Zone at depth
- Test for possible breccia mineralization at depth and down plunge

DDH GZ17 – 3B:

- Evaluate the BLT Zone near surface in an oblique direction

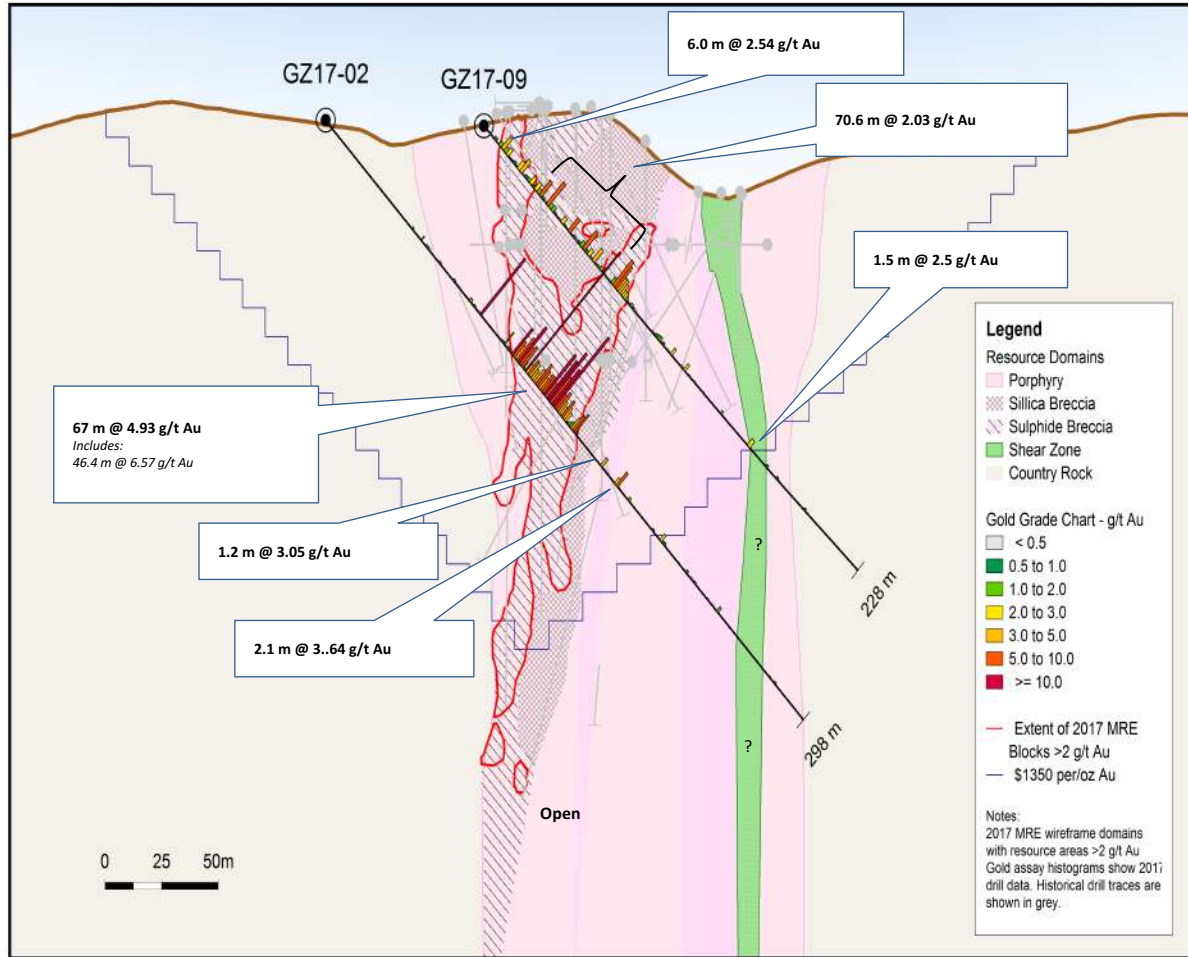
DDH GZ17 – 05:

- Test mineralization outside conceptual pit in the Mayflower trend area and the monzodiorite/sediments

DDH GZ17 – 04 & 08:

- For geological/geophysical information towards the Bryn Mawr fault zone

Golden Zone – 2017 DDH: Breccia Pipe Section

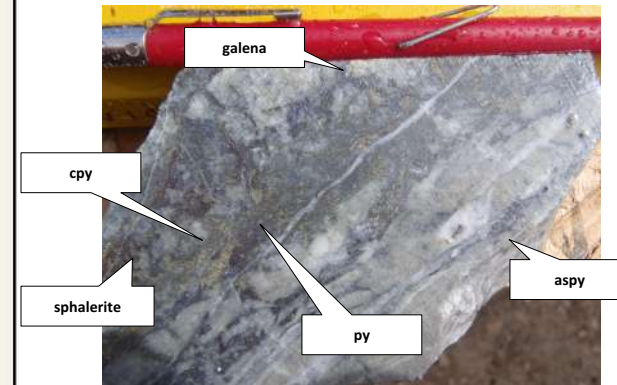
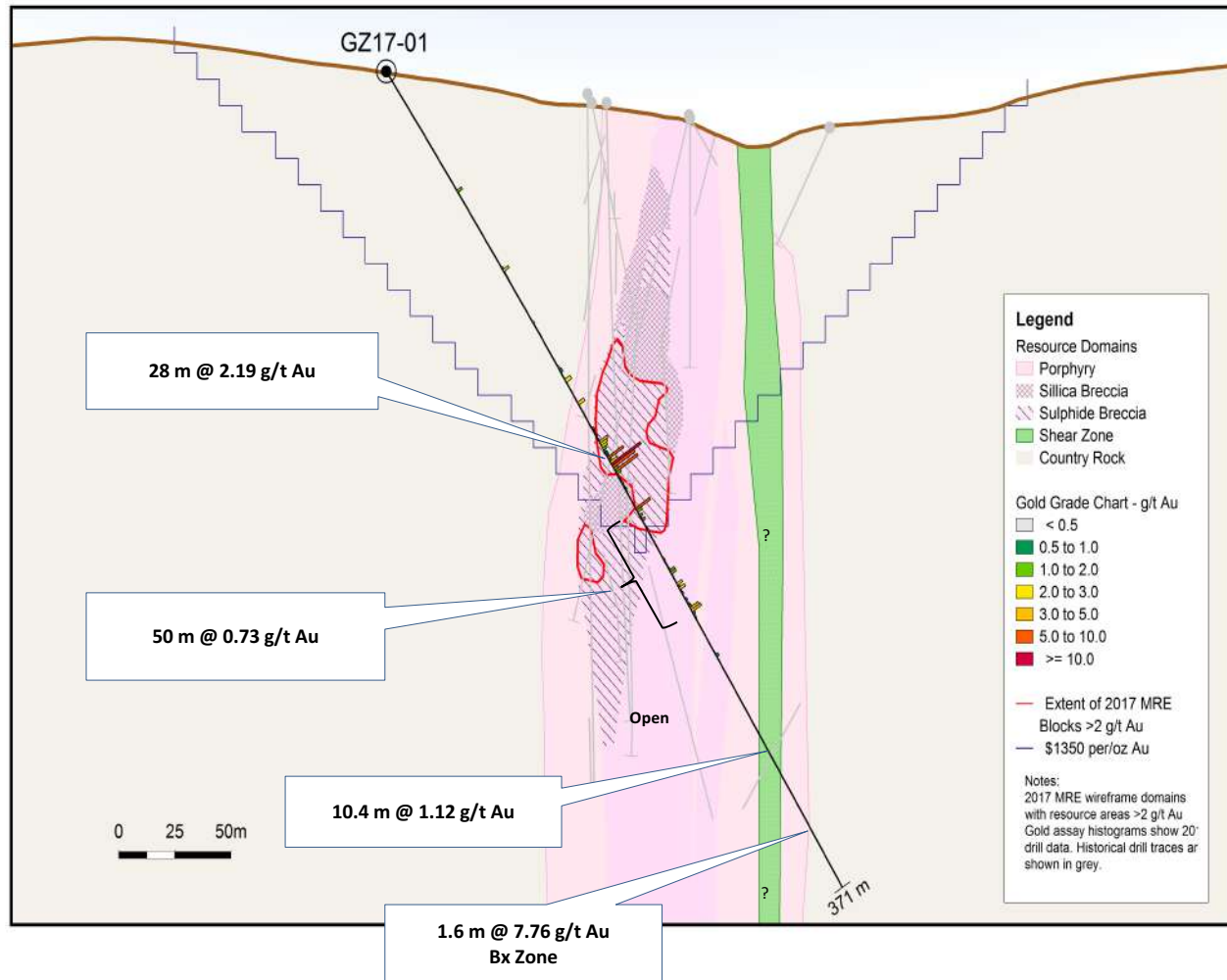


Hole GZ 17 – 02 at 137 m, py, asp bx zone
 2.0 m @ 10.5 g/t Au



Note: Drill Intersections are core length.

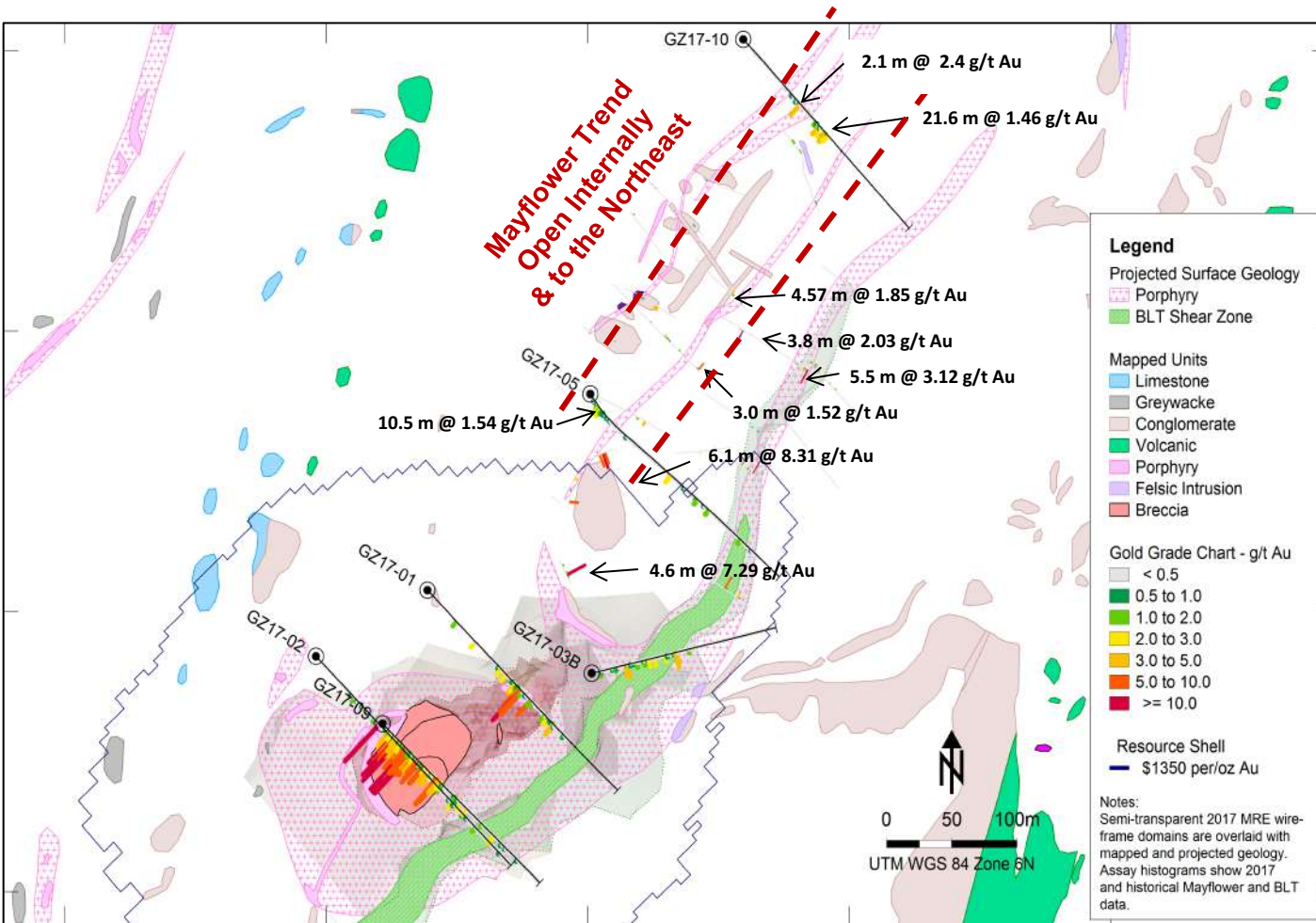
Golden Zone – 2017 DDH: Breccia Pipe Section



At 345 m – 1.6 m @ 7.76 g/t Au

Note: Drill Intersections are core length.

Golden Zone Breccia Pipe Area – Mayflower Trend

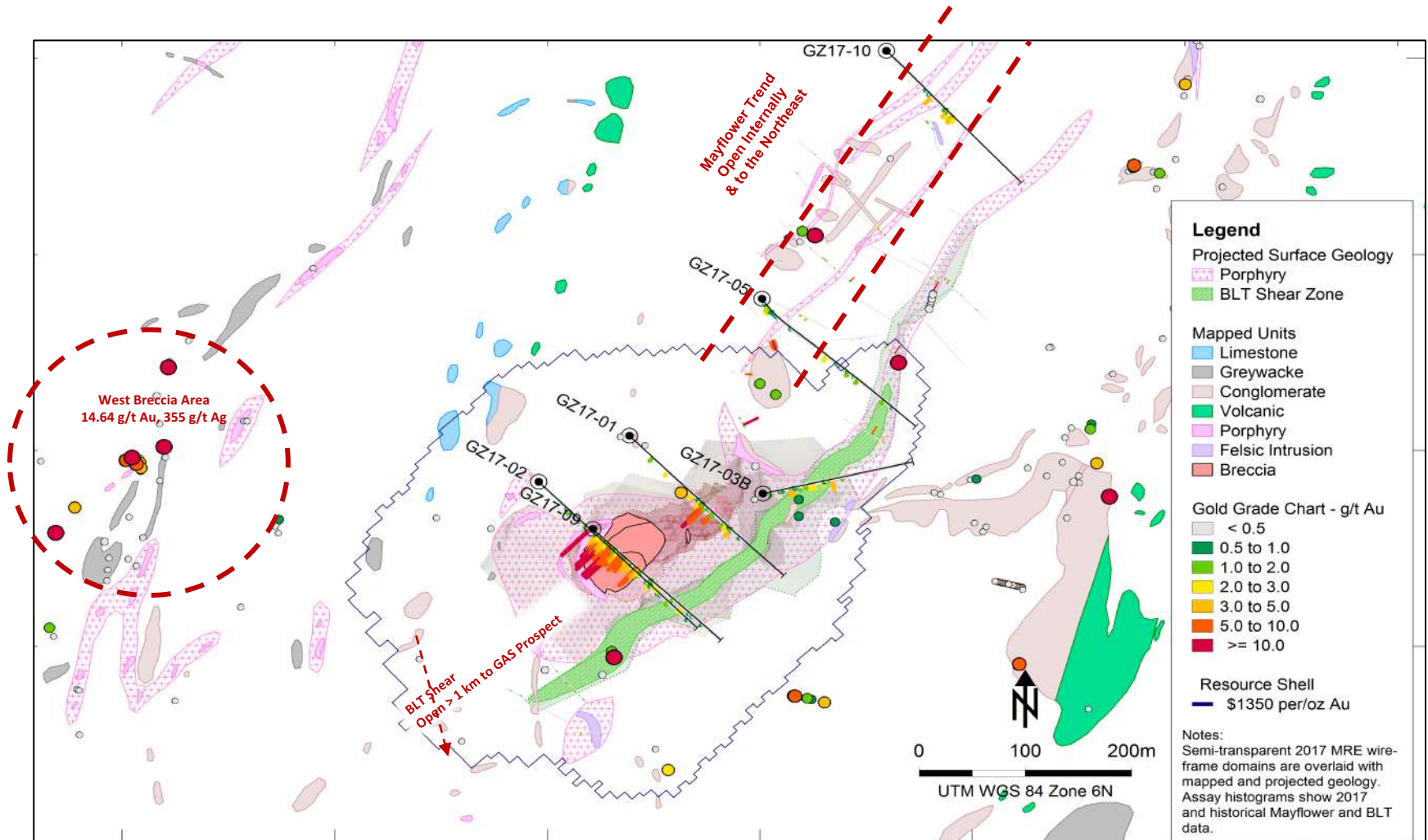


- Sparsely tested
- Better understanding of mineralization in 2017, +300 m and open
- Hole GZ17-10 drilled to test possible extension of the Mayflower trend to northeast and associated IP target
- **New**, previously unknown conglomeratic unit intersected in GZ17 -10: 21.6 m @1.46 g/t Au – may correlate with intersection at the top of hole GZ17 -05 (10.5 m @ 1.54 g/t Au)
- Open internally and to the northeast where no work has been done

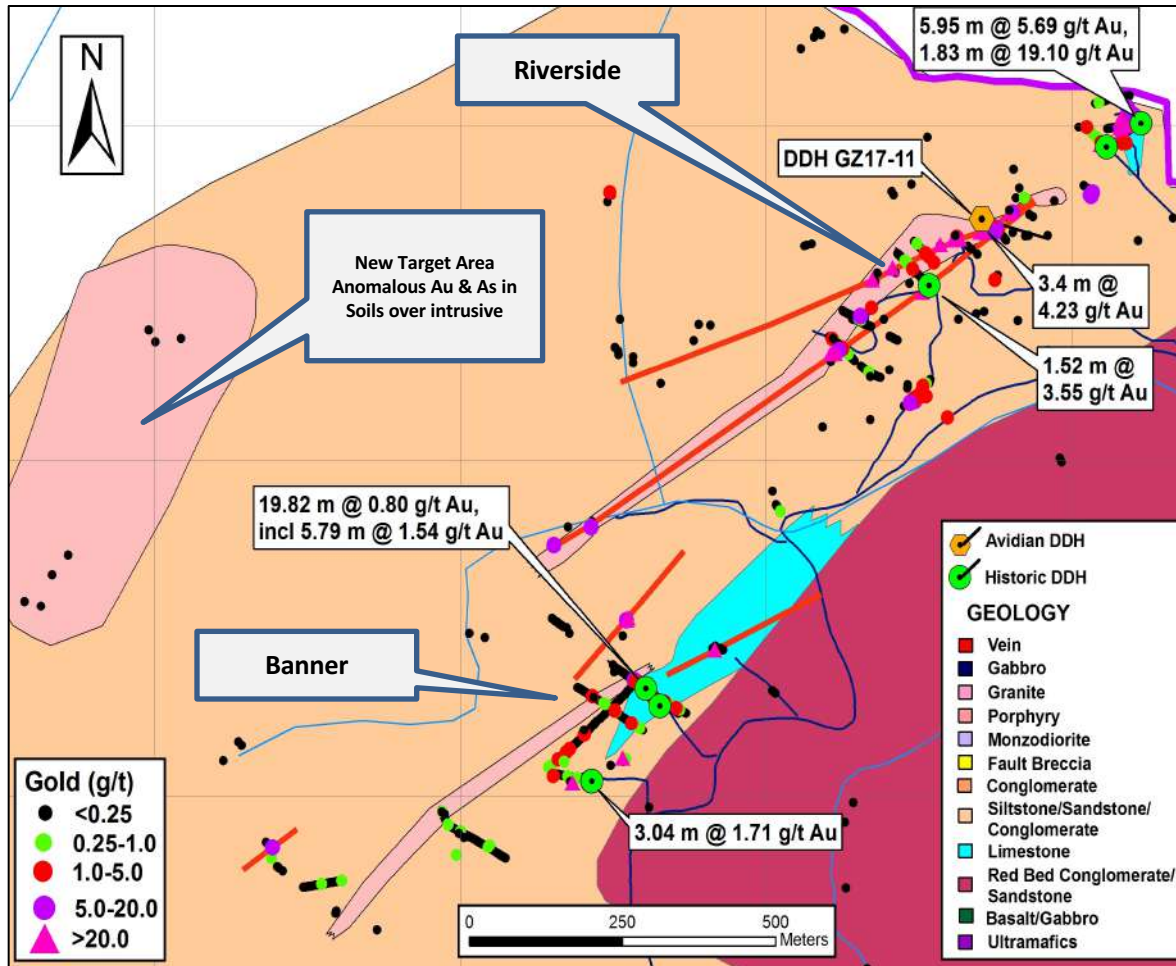
Note: Holes GZ17-04 & 08 not shown for clarity purposes only

Note: Drill Intersections are core length.

Golden Zone - West Breccia Discovery



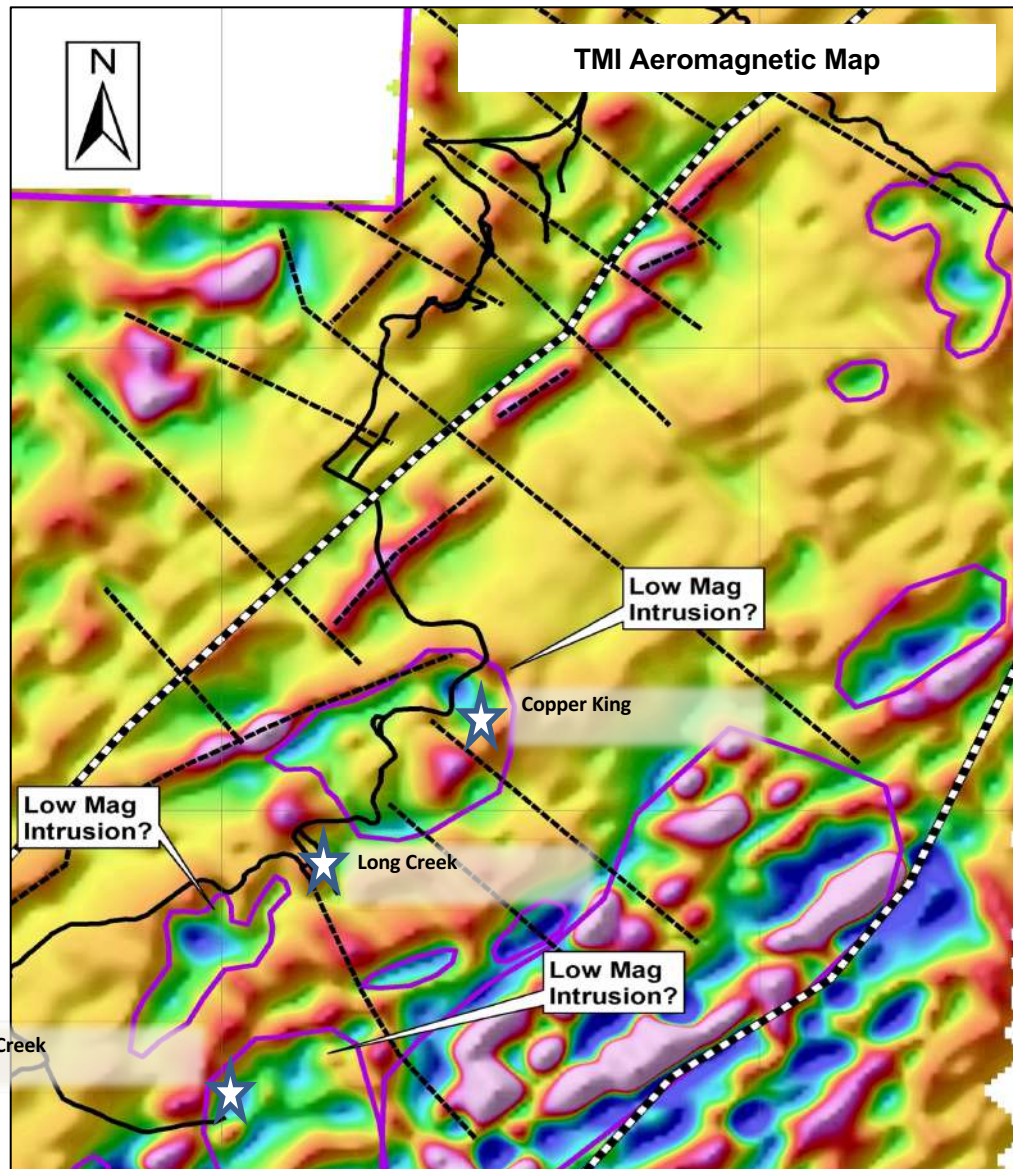
Note: Holes GZ17-04 & 08 not shown for clarity purposes only – No Significant Results



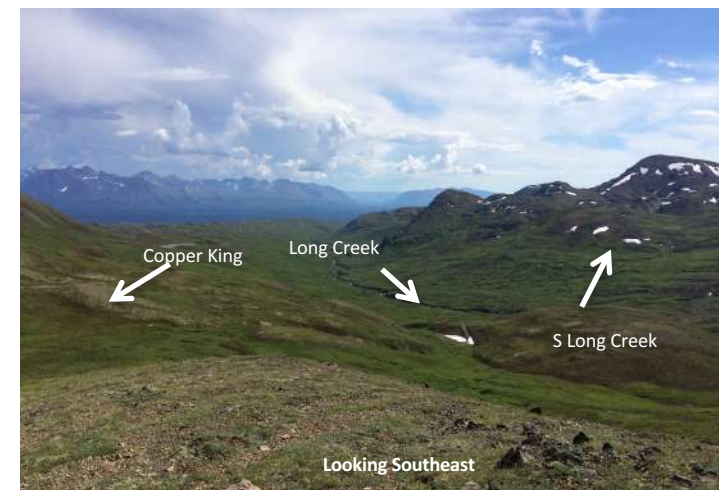
Note: Drill Intersections are core length.

- Riverside surface showings have notable high grade gold mineralization over narrow widths
- Mineralization associated with a quartz feldspar porphyry that can be traced over +1 km to the southwest towards the Banner Zone
- 2017 Hole GZ17-11 intersected multiple veins:
 - 3.4 m @ 4.23 g/t Au (at 52.3 m):
 - includes 1.0 m @ 12.19 g/t Au
 - 1.05 m @ 1.06 g/t Au (at 21.7 m)
 - 0.5 m @ 5.05 g/t Au (at 40.2 m)
 - 1.0 m @ 4.6 g/t Au (at 42.2 m)
 - 1.1 m @ 2.16 g/t Au (at 85.5 m)
 - 1.14 m @ 1.16 g/t Au (at 100.2 m)
 - 1.04 m @ 1.66 g/t Au (at 111.3 m)
 - 1.05 m @ 1.38 g/t Au (at 127.3 m)
- Drilling shows multiple vein sets that are not exposed on surface
- Large intrusive to the west with anomalous Au (156 ppb) and As (1,035 ppb) in soils that has never been drill tested – little outcrop exposure

Long Creek Corridor - Aeromagnetic Map



> 2 km long system with significant Au, Ag & base metal mineralization in skarns, hornfels and related intrusive stockwork mineralization

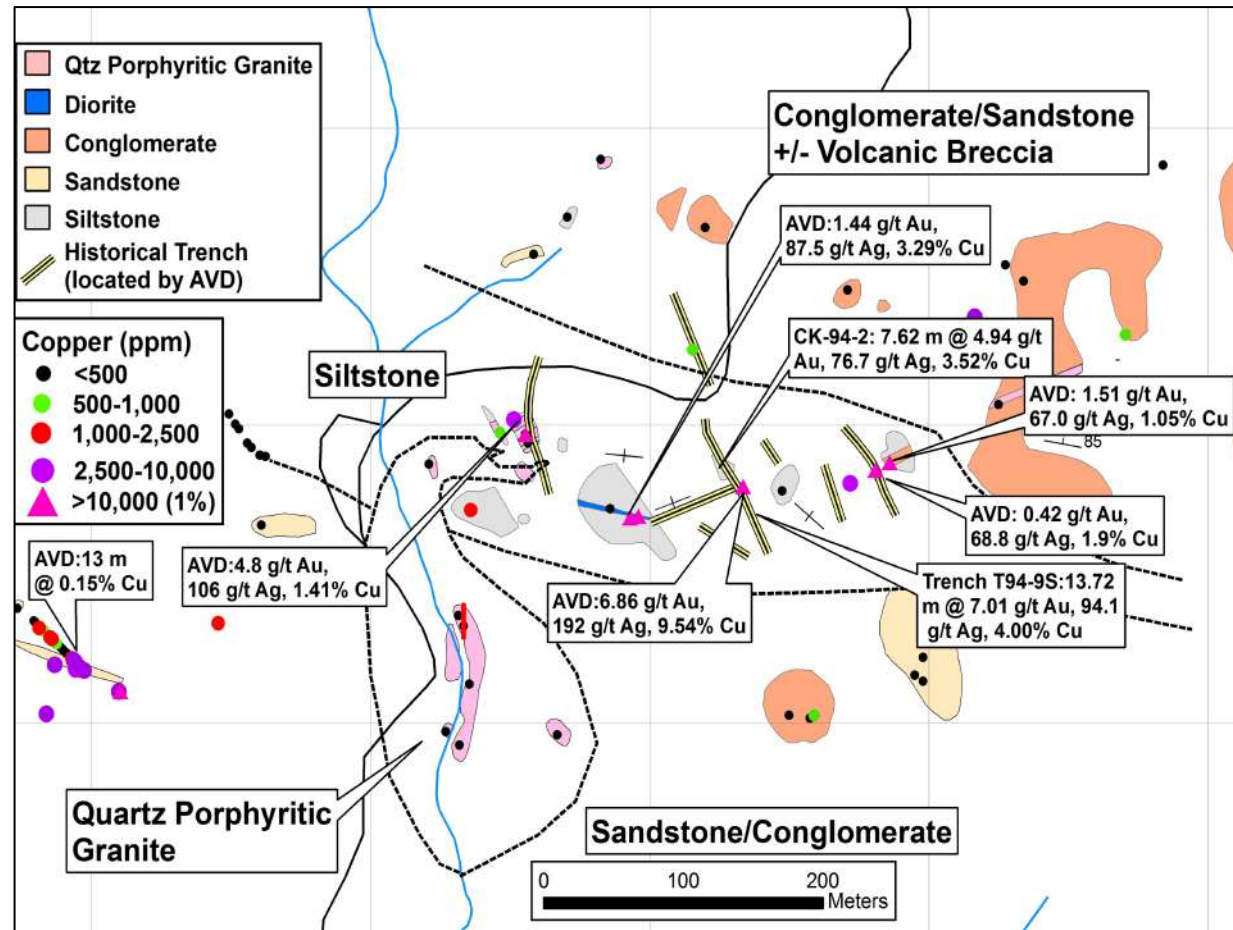
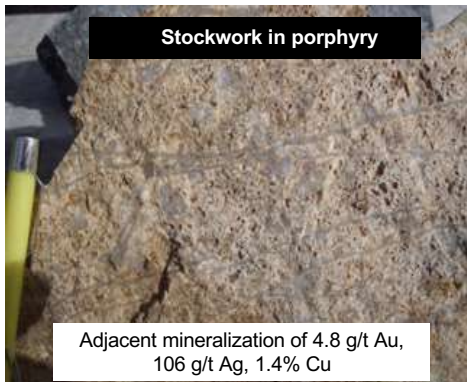


Mineral occurrences appear to be part of one large system, spatially related to magnetic lows

Long Creek Corridor – Copper King Prospect

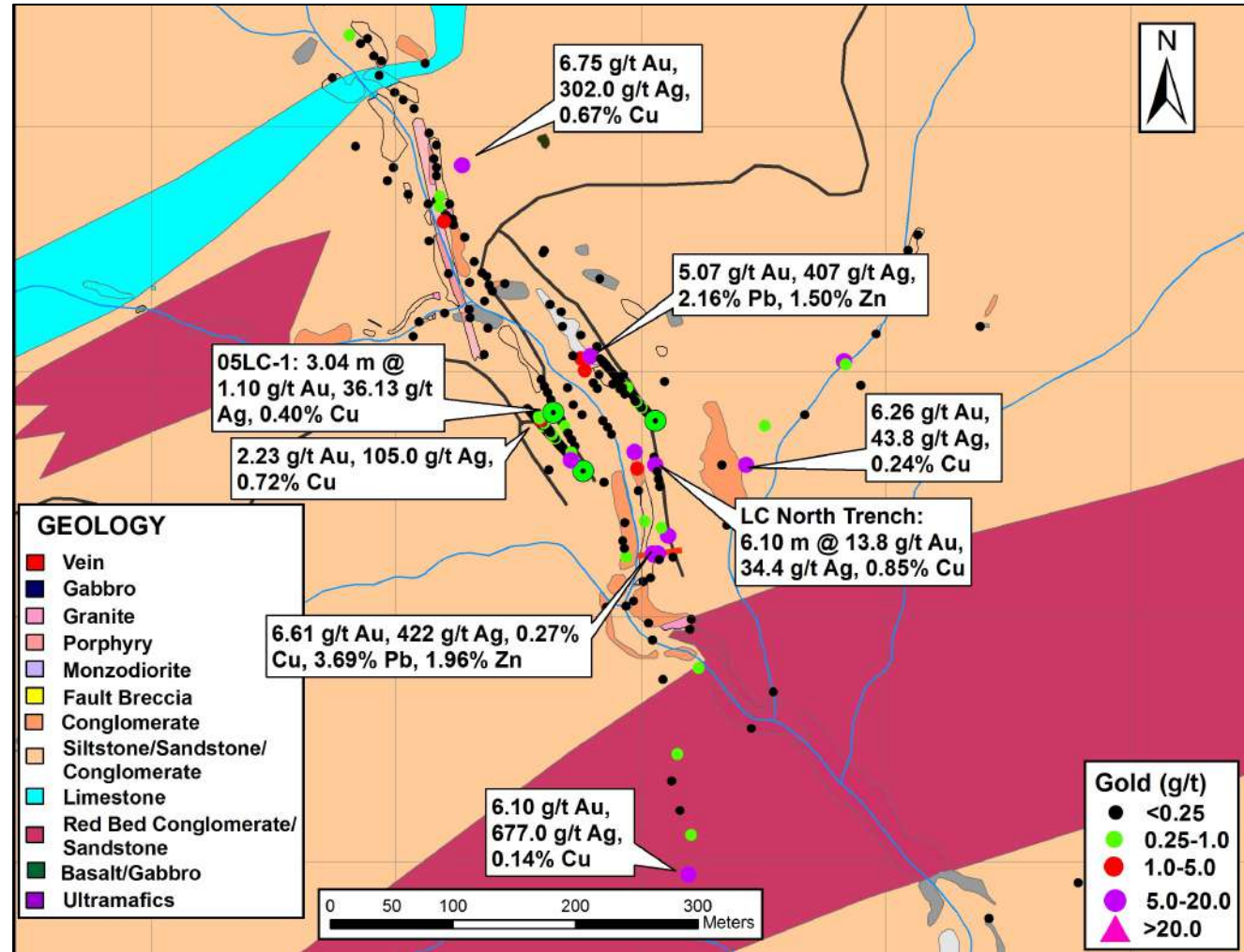
High Grade Au-Ag (base metal) mineralization: spatial proximity with Stockworked Porphyry

- High grade Au + Cu mineralization in sediments
- Disseminated molybdenite found in the quartz eye granite with chalcopyrite stringers – possibly related to a Cu-Au-Ag-Mo porphyry system
- Associated with an IP chargeability high adjacent to a magnetic low feature (interpreted to be intrusive body)
- Potentially near the roof zone of a mineralized intrusive body

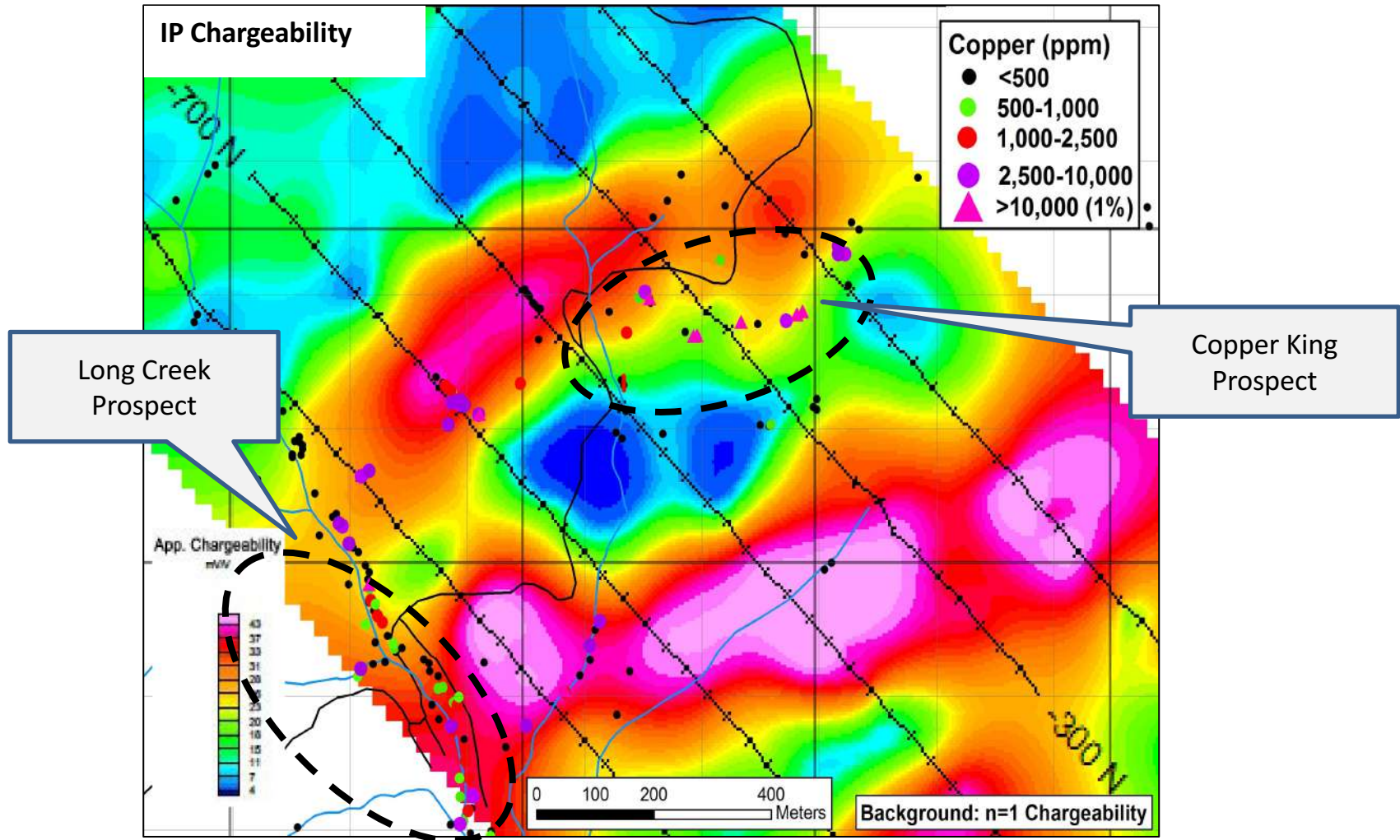


Potential for Polymetallic Mineralization

- Similar to the neighbouring Copper King Prospect (~1 km to the north)
- Only evaluated along a river cut as no outcrop in the area or between Copper King and Long Creek prospects
- Associated with an IP chargeability high between two magnetic low features (interpreted to be intrusive bodies)
- Key sampling results include:
 - 05LC-1: 3.04 m @ 1.10 g/t Au, 36.13 g/t Ag, 0.40% Cu
 - LC North Trench: 6.10 m @ 13.8 g/t Au, 34.4 g/t Ag, 0.85% Cu
 - 5.07 g/t Au, 407 g/t Ag, 2.16% Pb, 1.5% Zn



Mineralization associated with an IP Chargeability high

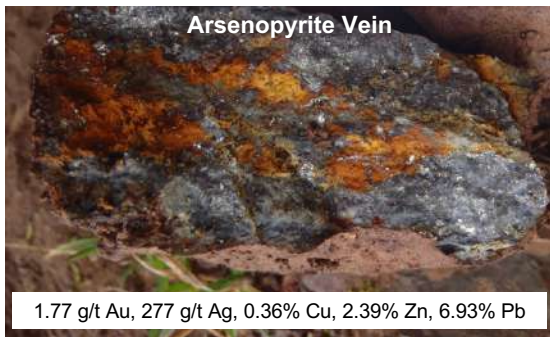
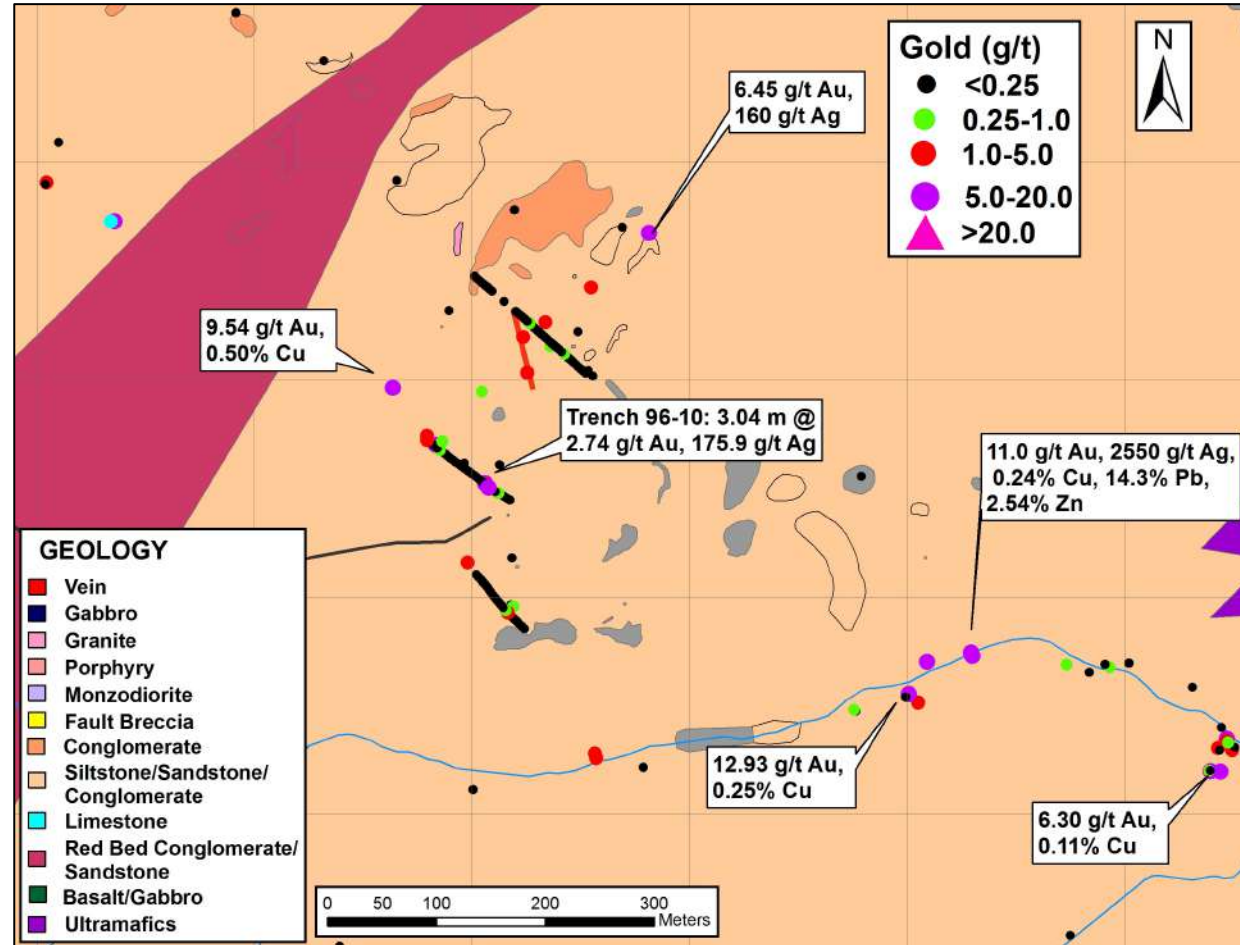


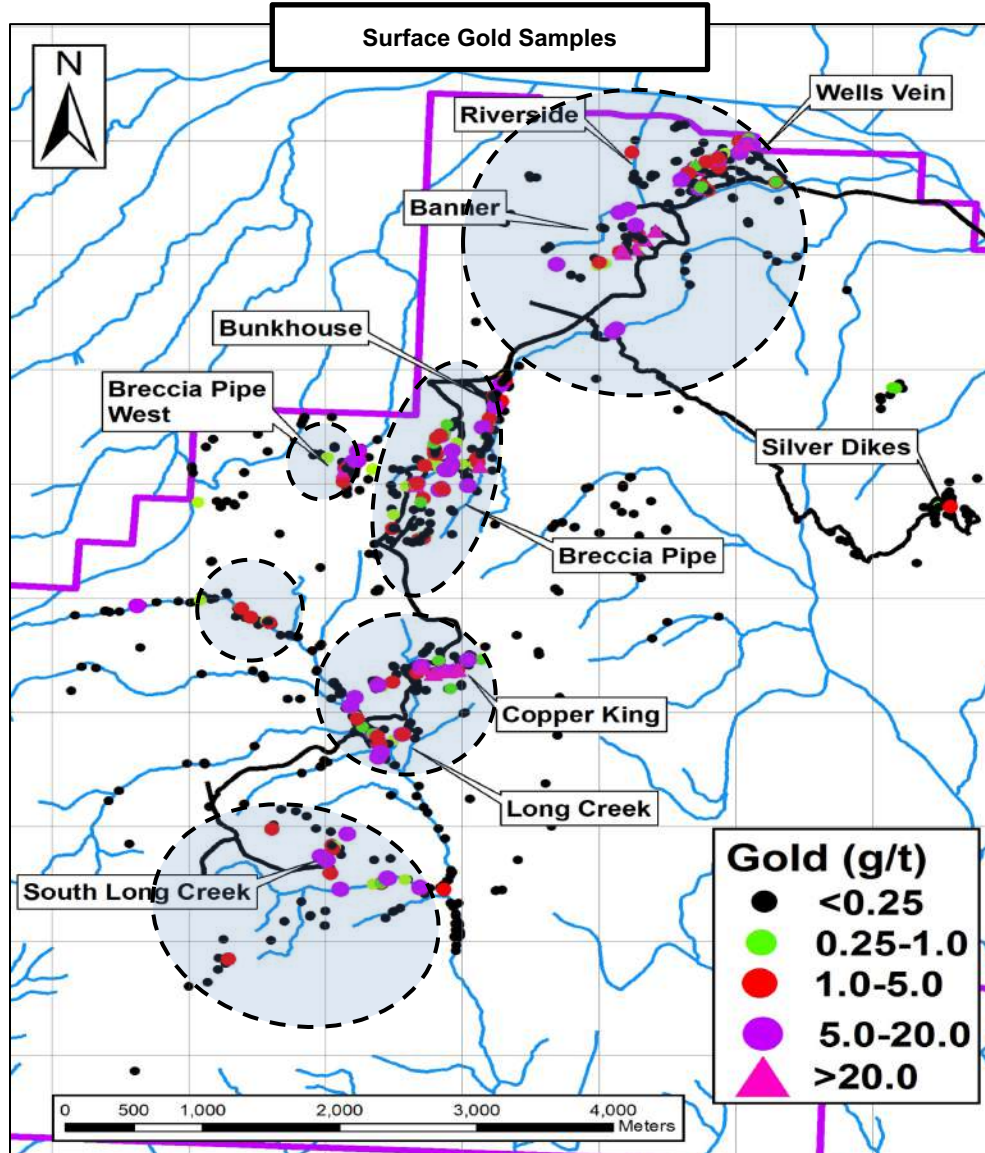
Long Creek Corridor – S Long Creek Prospect



Similar to Copper King and Long Creek Prospects

- Prospect lies ~2 km south of the Copper King Prospect
- Associated with a magnetic low feature
- Very limited work done on the prospect
- Notable results include:
 - Trench sample 96-10: 3.04 m @ 2.74 g/t Au, 175.9 g/t Ag
 - 11.0 g/t Au, 2,550 g/t Ag, 0.24% Cu, 14.3% Pb and 2.54% Zn





- Follow up on the drill results in and around the Breccia Pipe Deposit, particularly hole GZ17 -10 and the northeasterly extent of the Mayflower Trend
- Evaluate the > 1 km mineralized trend of the BLT Zone southwest towards the GAS mineralization
- Evaluate/drill the Riverside mineralization and its extent (> 1 km) towards the Banner Zone and the associated intrusive to the northwest
- Test the newly discovered Breccia Pipe West zone
- Evaluate the area discovered southwest of the West Breccia and in between
- Drill test the Copper King – Long Creek and South Long Creek occurrences
- Surface prospecting, IP surveys, regional mapping & soil sampling throughout the property



- Main occurrences/mineralization lie within a Mining Lease (32 year term remaining) with balance of property on State of Alaska land.
- High-grade Au-As veins and Cu-Au veins proximal to and/or above possible intrusion-hosted sheeted vein deposits, such as Fort Knox (+8 Moz).
- Geological and exploration analogies include Donlin Creek (39.3 Moz) & Dublin Gulch. (+6.3 Moz).
- +4 km “Golden Zone Corridor” hosts several high grade Au occurrences and the Breccia Pipe Deposit, which remains open at depth and potentially on-strike and in adjacent zones.
- +2 km “Long Creek Corridor” host 3 known occurrence of high grade Au-Cu veins, all open and potentially relating to an underlying porphyry system that needs to be drill tested.
- Golden Zone Breccia Pipe Deposit - highly leveraged to Au price.
- New discoveries made in 2017 in vicinity of the Breccia Pipe Deposit and at Riverside
- Overall property setting is highly prospective laterally to and at depth of the known occurrences for both high-grade & low grade bulk tonnage deposits.
- “Silver Dikes Corridor” yet to be evaluated.



- 58.9 sq km (14,560 acres) comprised of 2,960 acre Uplands Mining Lease, 11,600 acres of State of Alaska Claims and a non-contiguous 40 acre Mill Site Lease.
- Avidian owns 29.4% interest with a purchase agreement to acquire the balance interest of 70.6% for US \$875,000 in cash & US \$1,125,000 of stock over a 7 year period (to 2023), plus a work commitment of US \$2,000,000 over 5 years (minimum of US \$200,000 annually). Any cash payments after 2019 will be considered as an advance royalty & deducted from 50% of NSR payable.
- 4% NSR of which 1.4% can be bought out for US \$1,400,000 at Avidian option and an additional 1.6% for US \$1,600,000 at vendors option.
- Holding Cost of approx. US\$ 35,000 per year (Mining lease, Mill Site lease and claims rentals costs & general overhead costs).

- The Golden Zone project is entirely on land patented to the State of Alaska that was selected by the state specifically for mineral development.
- The core of the property that hosts the known mineral occurrences as well as the Golden Zone Breccia Pipe Deposit sits on a Mining Lease (patented ground) that was put in place in 1995 with a term of 55 years.
- The State of Alaska is supportive of sound mineral development and has several programs in place to facilitate mining development:

Large Mine Permitting Team Program (LMPTP)

The Alaska Department of Natural Resources (ADNR) is the lead agency responsible for approving the mining and construction permits for the project. The team provides guidance and oversight in the permitting process, identify key environmental studies, file permit applications and work on behalf of the company with all agencies both State and Federal.

Roads to Resources program (R2R)

Works with state agencies, resource developers, and other interested parties to design and build projects that support development.

Alaska Industrial Development and Export Authority (AIDEA)

A public corporation of the State created to promote the health, security, and general welfare of the people of the state, and increase job opportunities and encourage the economic growth. Avidian can utilize AIDEA throughout to help with financing through bond issuance or direct loans for the development of the project.

Division of Economic Development (DED)

A one-stop shop that helps stakeholders navigate the network of programs offering technical assistance and support for mineral development. Works with other state agencies to facilitate mineral development in the state

Breccia Pipe Deposit - Mineralization



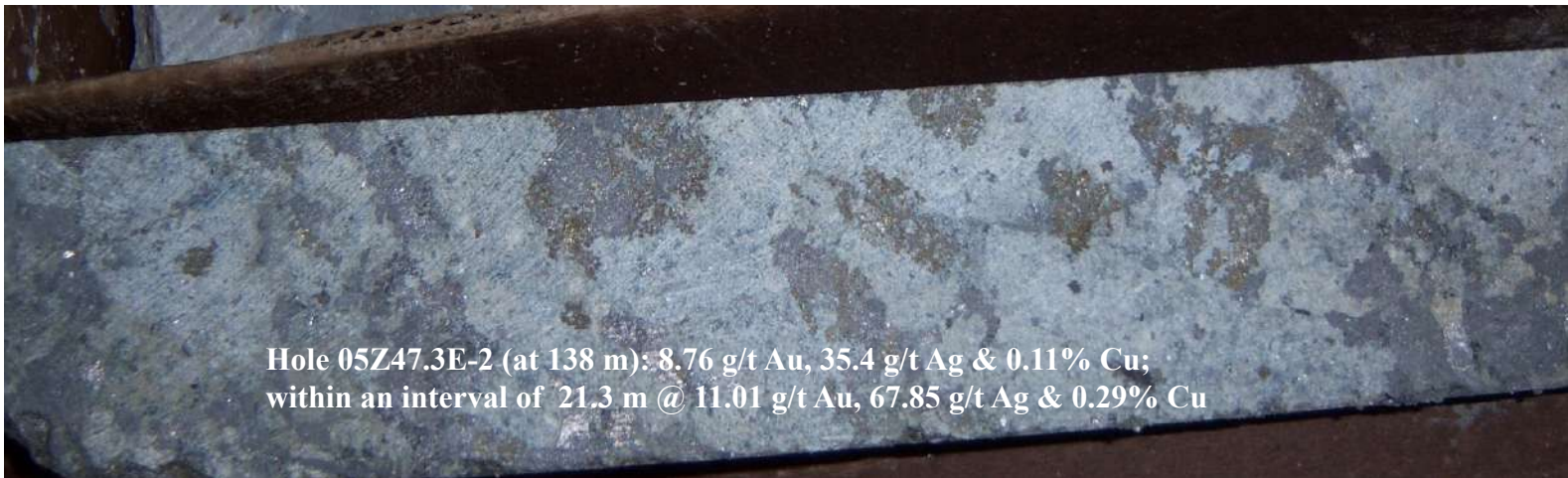
Hole GZBX11-003 (at 147 m) aspy clot ringed by py-cpy: interval grades **5.94 g/t Au, 19.7 g/t Ag, 0.18% Cu**



Patchy py-cpy in fractures with aspy disseminated and in clumps: interval grades **7.48 g/t Au, 34.5 g/t Ag, 0.16% Cu**



Breccia formed by invasion of silica-ankerite veins.



Hole 05Z47.3E-2 (at 138 m): **8.76 g/t Au, 35.4 g/t Ag & 0.11% Cu;**
within an interval of 21.3 m @ **11.01 g/t Au, 67.85 g/t Ag & 0.29% Cu**

Breccia Pipe Deposit – 2016 Resource Estimate

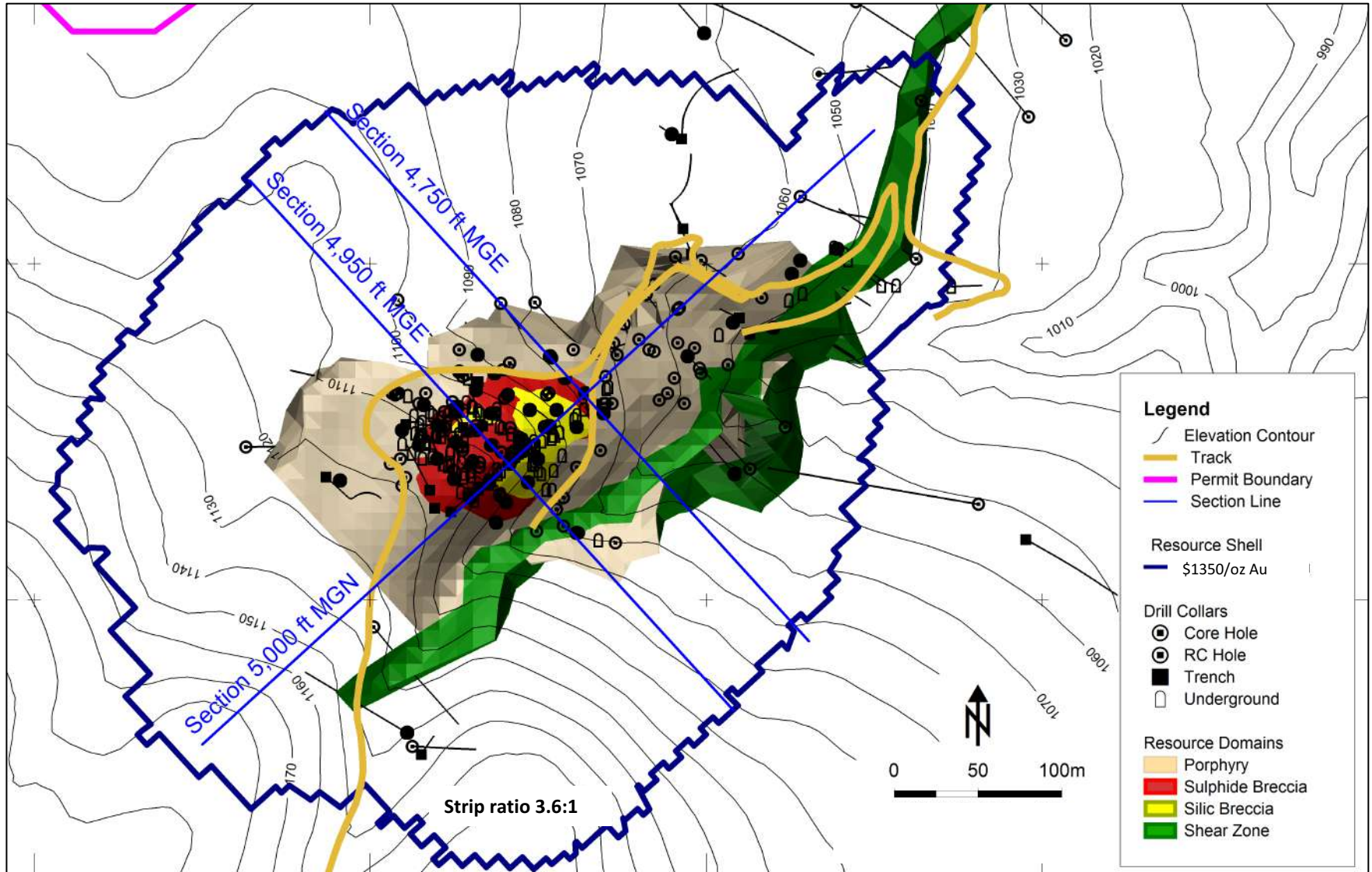
Resource Estimate (at 0.5 g/t Au Cut-off)

Category	Deposit Type	Density (t/m ³)	Tonnes	Au		Ag	
				Grade (g/t)	Ozs	Grade (g/t)	Ozs
Indicated	Porphyry	2.73	1,811,000	0.89	52,200	3.20	186,300
	Silica Breccia	2.80	369,000	0.93	11,100	8.64	102,500
	Sulphide	3.22	2,007,000	3.17	204,300	17.19	1,109,000
	TOTAL		4,187,000	1.99	267,400	10.38	1,397,800
Inferred	Porphyry	2.73	142,000	0.75	3,400	1.84	8,400
	Shear Zone	2.69	1,216,000	0.83	32,600	2.65	103,400
	TOTAL		1,353,000	0.83	35,900	2.56	111,400

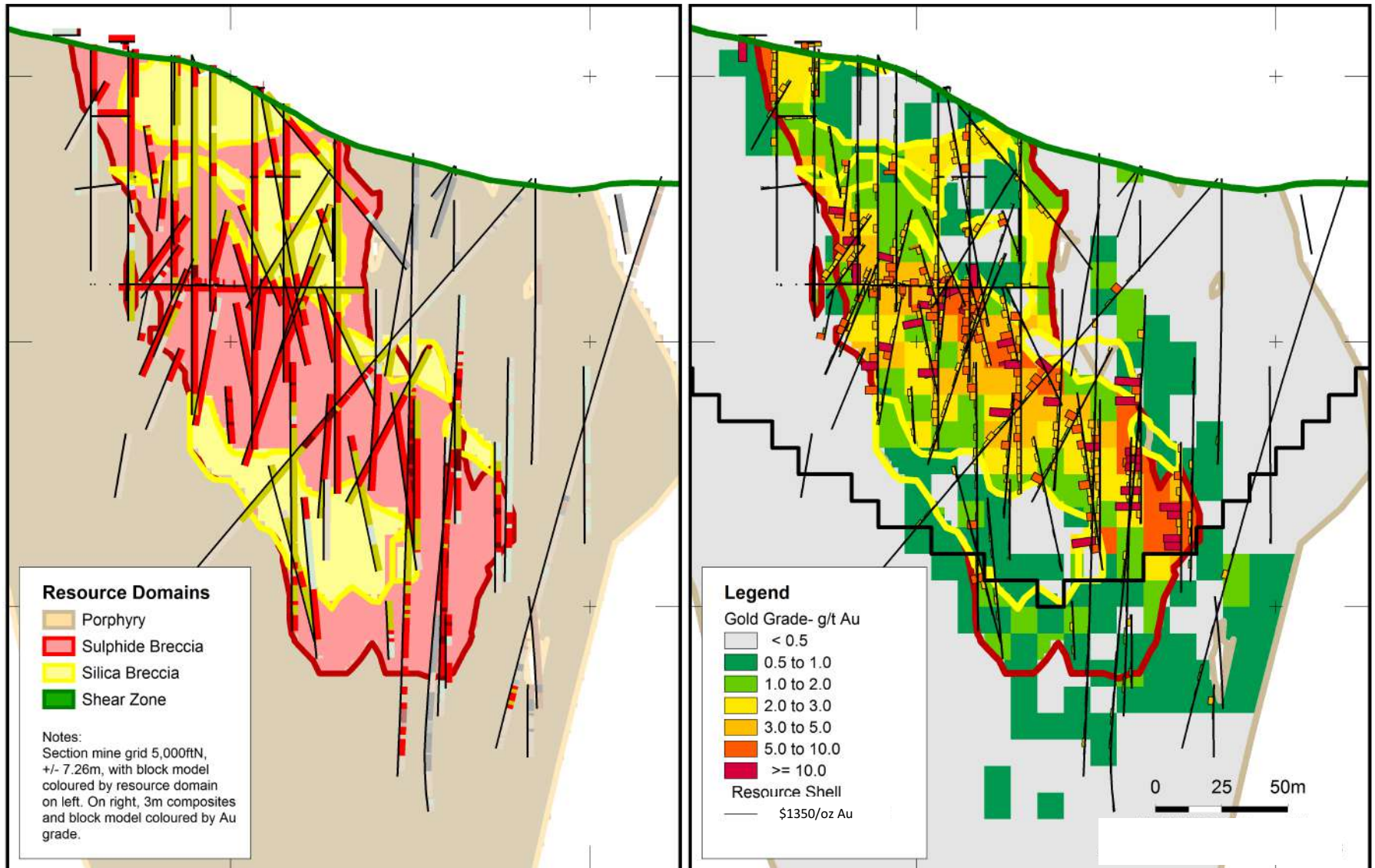


- Amenable to open-pit mining (3.6 strip ratio) and conventional milling and processing. Majority of the Au mineralization appears free milling. Note: Base metals not analyzed.
- Tonnes and ounces are rounded to reflect the relative accuracy of the mineral resource estimate.
- Assay capping values are used for gold values: Porphyry- 20 g/t Au, Silica Breccia- 25 g/t Au, Sulphide Breccia- 35 g/t Au, Shear Zone- uncapped; & for silver values: Porphyry- 60 g/t Ag, Silica Breccia- 130 g/t Ag, Sulphide Breccia- 200 g/t Ag, Shear Zone- 40 g/t Ag.
- Blocks informed by 3 or more drill holes and within 30 m of the nearest sample are assigned the Indicated category. All remaining blocks within a Whittle shell generated using a \$1,350/oz gold price are classified as Inferred. Blocks outside of the floating cone are not classified.

Breccia Pipe Deposit, Plan View of Resource Model

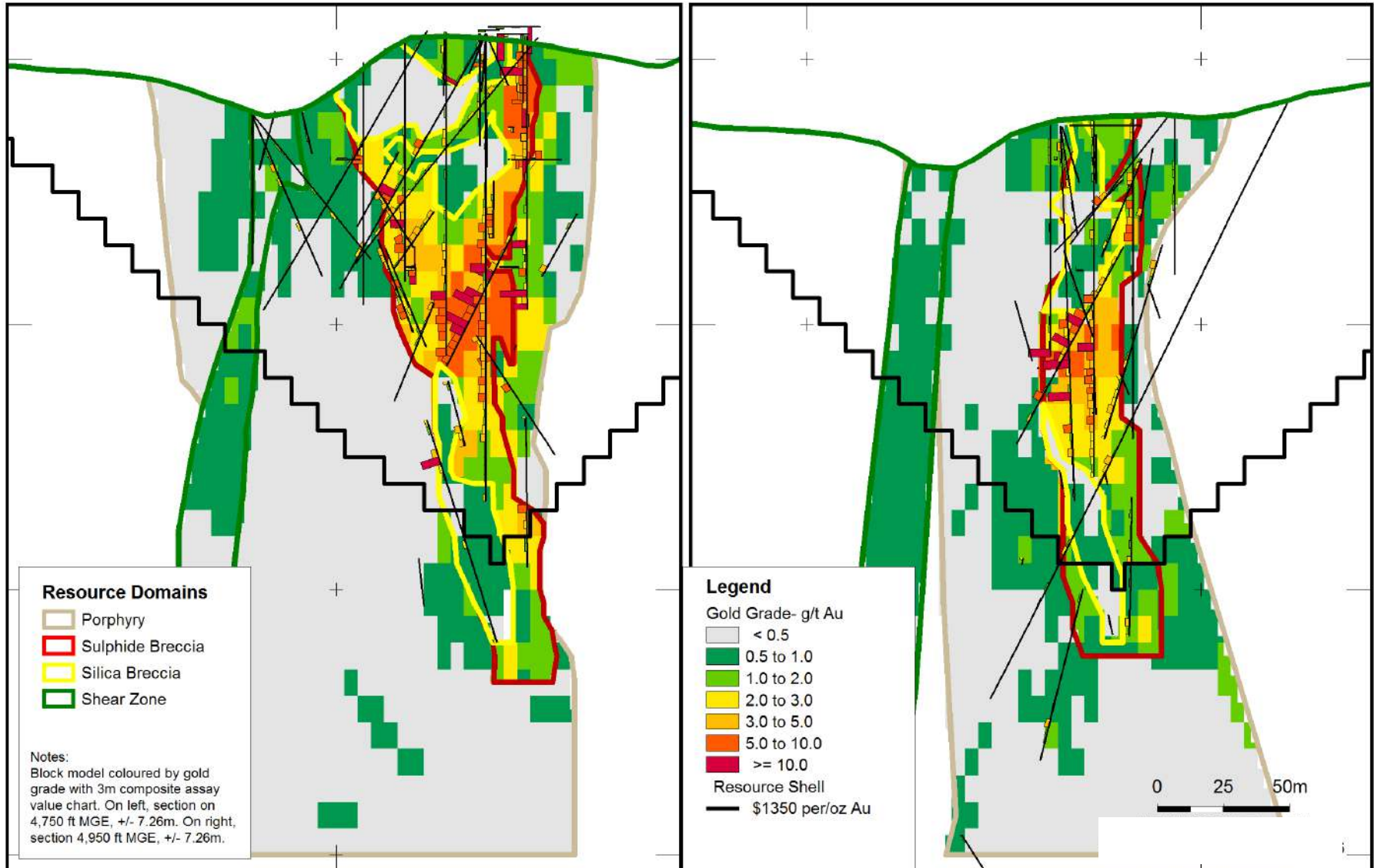


Breccia Pipe Deposit - Long Section, Domains & Au Grades



Long Section 5,000 N

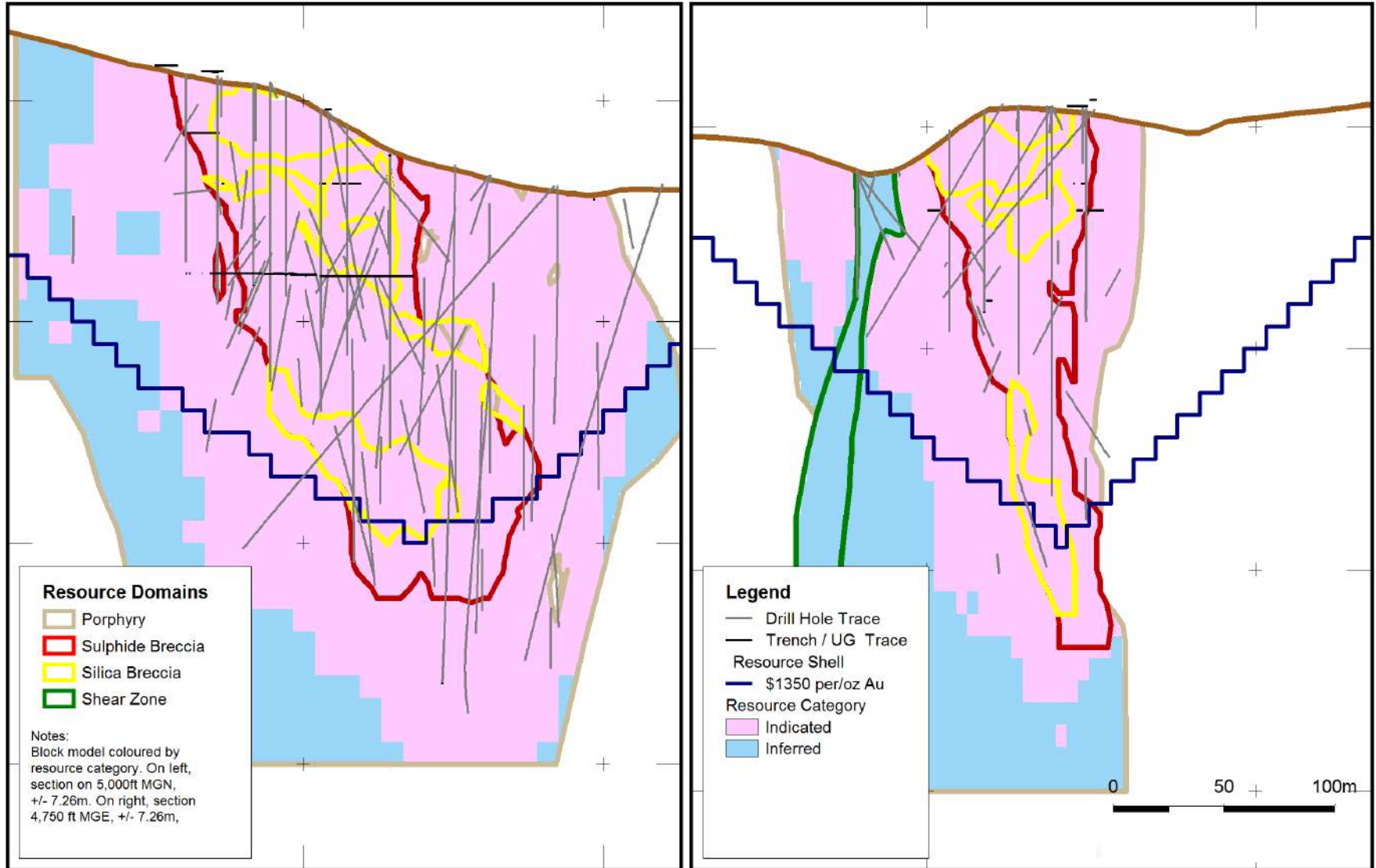
Breccia Pipe Deposit – X- Sections, Domains & Au Grades



X-Section 4,750 E

X-Section 4,950 E

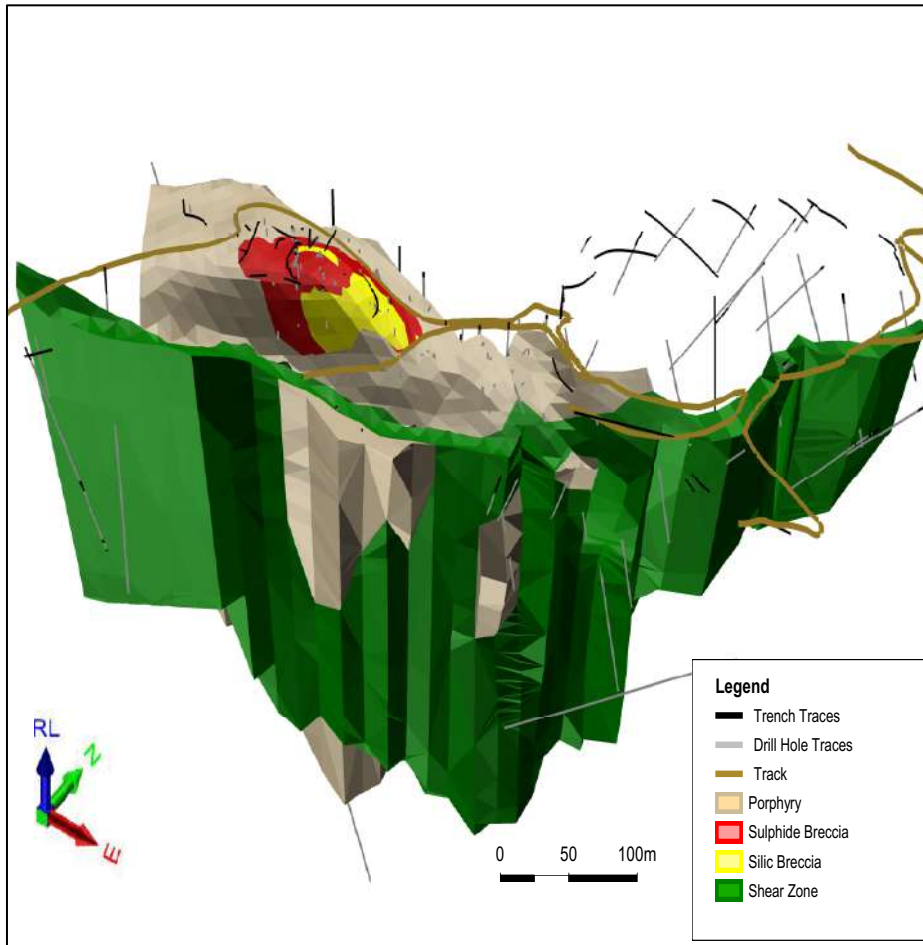
Breccia Pipe Deposit, Sections with Resource Categories



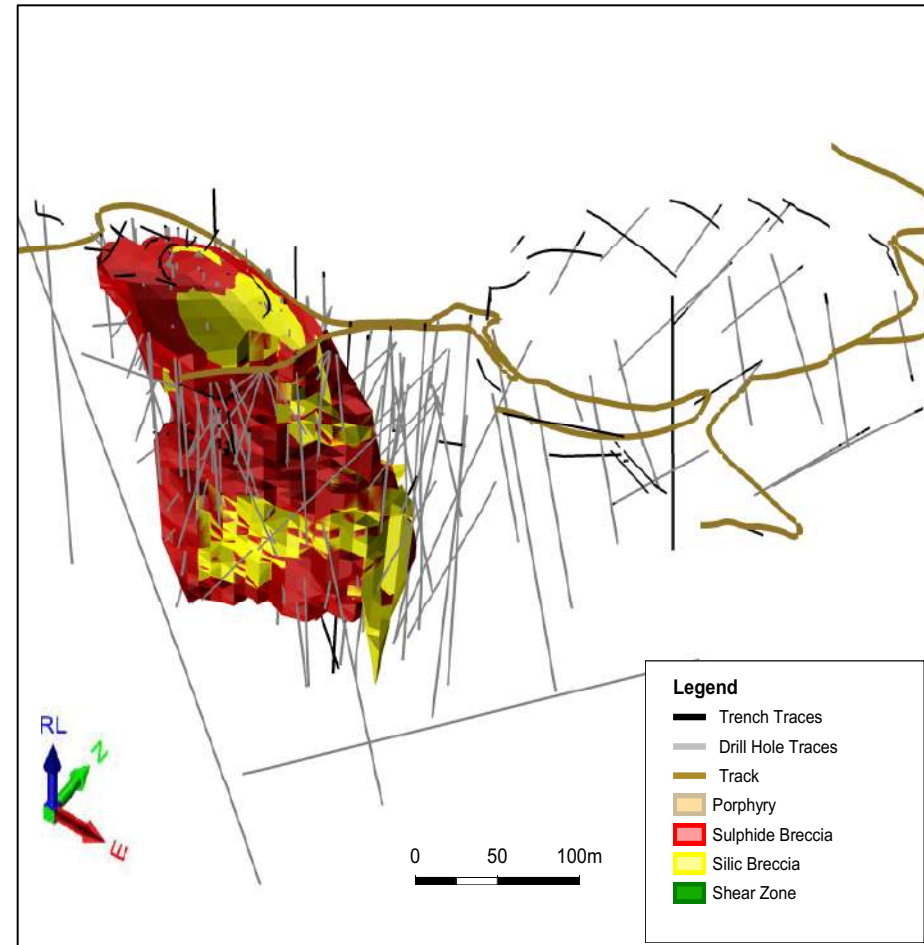
Long Section 5,000 N

X-Section 4,750 E

Breccia Pipe Deposit, NW Orthogonal View



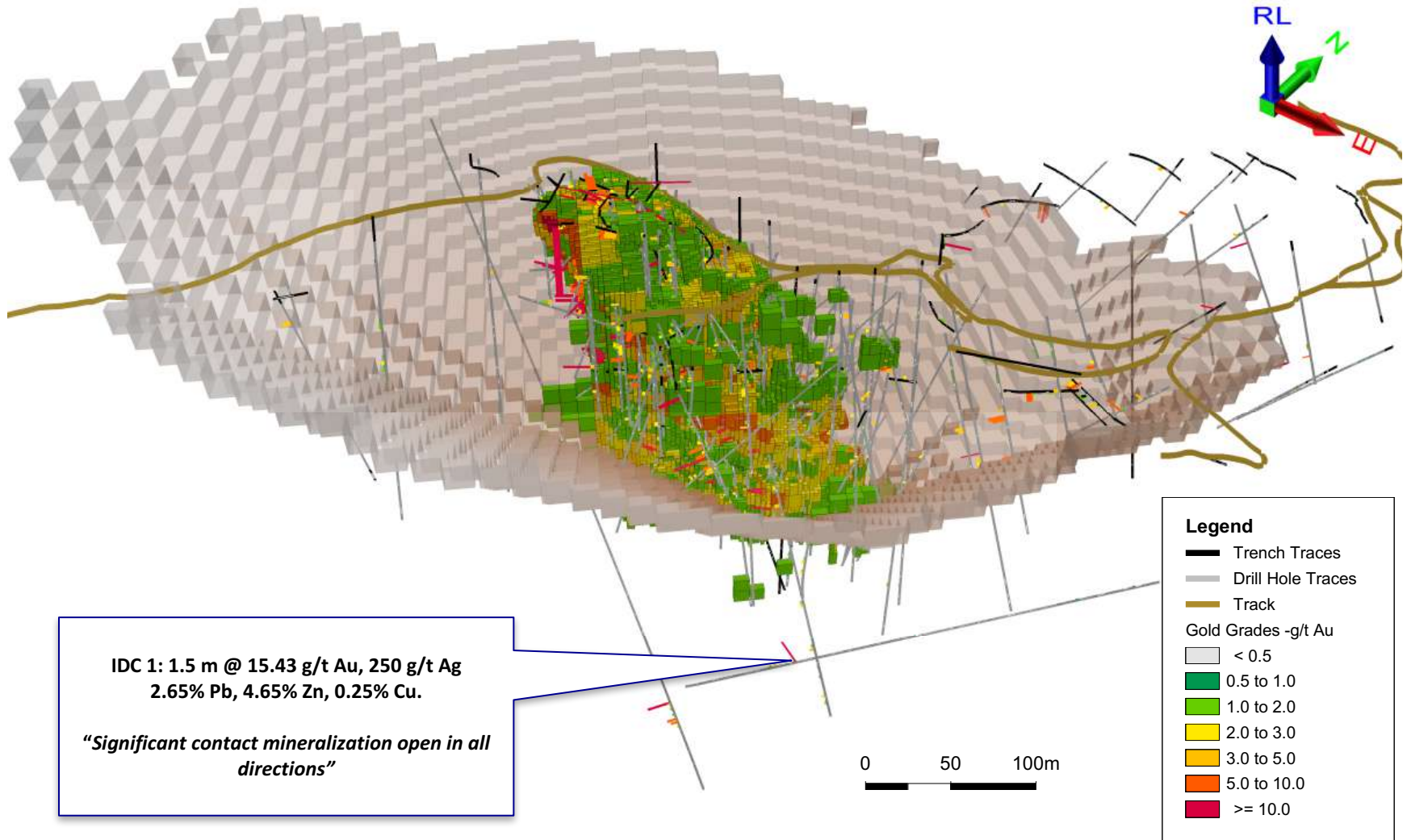
All Resource Wireframes



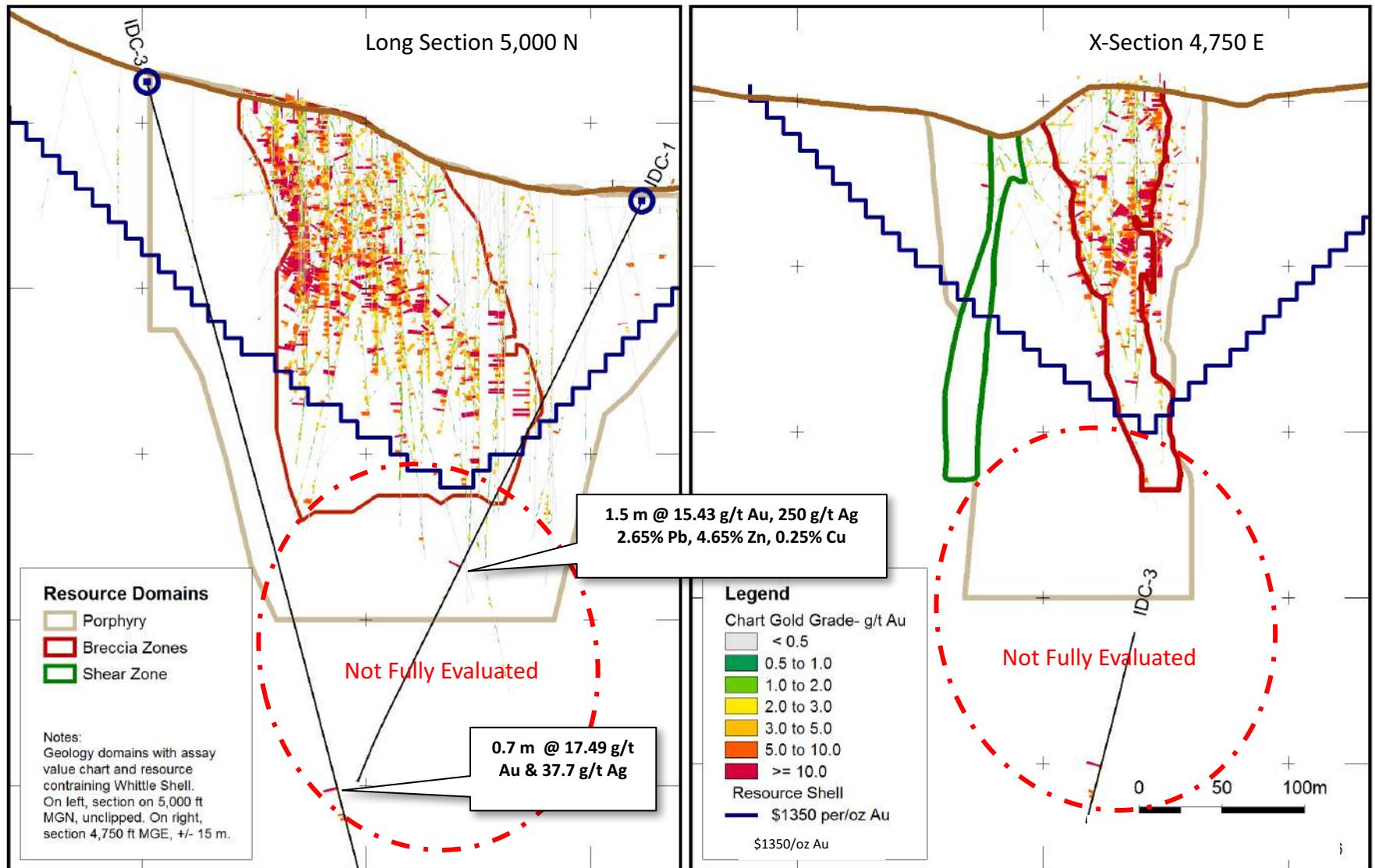
Sulphide & Silica Breccia Resource Wireframes

Breccia Pipe Deposit, Resource Blocks > 1.0 g/t Au

Orthogonal View Looking NW



Breccia Pipe Deposit - Sections with Au Grades, Potential



Sections Showing All Au grades & Wireframe Silhouette







