

AMANITA PROPERTY, Alaska



CONTIGUOUS AND ON TREND WITH THE FORT KNOX PRODUCING GOLD MINE

Cautionary Statement



This presentation ("Presentation") contains forward-looking information that involves substantial known and unknown risks and uncertainties, most of which are beyond the control of Avidian Gold Corp. ("Avidian"). Forward-looking statements include estimates and statements that describe Avidian's future plans, objectives or goals, including words to the effect that Avidian or its management expects a stated condition or result to occur. Forward-looking statements may be identified by such terms as "believes", "anticipates", "expects", "estimates", "may", "could", "would", "will", or "plan". Since forward-looking statements are based on assumptions and address future events and conditions, by their very nature they involve inherent risks and uncertainties. Although these statements are based on information currently available to Avidian, Avidian provides no assurance that actual results will meet management's expectations. Risks, uncertainties and other factors involved with forward-looking information could cause actual events, results, performance, prospects and opportunities to differ materially from those expressed or implied by such forward-looking information. Forward looking information in this presentation includes, but is not limited to, Avidian's objectives, goals or future plans, statements, exploration results, potential mineralization, Avidian's portfolio, treasury, management team and enhanced capital markets profile, the proposed private placement, the timing of the Transaction, the estimation of mineral resources, exploration and mine development plans, timing of the commencement of operations and estimates of market conditions. Factors that could cause actual results to differ materially from such forward-looking information include, but are not limited to, problems, expenses, difficulties, complications and delays frequently encountered in connection with the establishment of any business, failure to identify mineral resources, failure to convert estimated mineral resources to reserves, the preliminary nature of metallurgical test results, delays in obtaining or failures to obtain required governmental, regulatory, environmental or other project approvals, political risks, unprofitable efforts resulting not only from the failure to discover mineral deposits but also from finding mineral deposits that, though present, are insufficient in quantity and quality to return a profit from production, uncertainties relating to the availability and costs of financing needed in the future, changes in equity markets, inflation, changes in exchange rates, fluctuations in commodity prices, delays in the development of projects, capital and operating costs varying significantly from estimates and the other risks involved in the mineral exploration and development industry. There is no assurance that Avidian's mineral exploration and development activities will result in any discoveries of commercial bodies of ore. Mining exploration requires ready access to mining equipment such as drills, and crews to operate that equipment. There can be no assurance that such resources will be available to Avidian on a timely basis or at a reasonable cost. Unusual or infrequent weather phenomena, sabotage, or other interference in the maintenance or provision of infrastructure required for mineral exploration could adversely affect Avidian's operations, financial condition and results of operations. The further development and exploration of Avidian's projects depends upon Avidian's ability to obtain financing through equity financing, joint ventures, debt financing, or other means. There is no assurance that Avidian will be successful in obtaining required financing as and when needed. There is no guarantee that Avidian's title to such properties will not be challenged or impugned or that the appropriate permits and approvals will be obtainable on reasonable terms or on a timely basis; the licenses will be renewed upon their expiry; and that Avidian will be able to explore its properties as permitted or to enforce its rights with respect to its properties.

Although Avidian believes that the assumptions and factors used in preparing the forward-looking information in this presentation are reasonable, undue reliance should not be placed on such information, which only applies as of the date of this Presentation, and no assurance can be given that such events will occur in the disclosed time frames or at all. Avidian disclaims any intention or obligation to update or revise any forward-looking information, whether as a result of new information, future events or otherwise, other than as required by law.

The technical information contained in this presentation has been verified and approved by Dino Titaro and Tom Setterfield who are registered as a P.Geo in Ontario and a "Qualified Person" for the purpose of National Instrument 43-101, Standards of Disclosure for Mineral Projects of the Canadian Securities Administrators.

Notice to Canadian Residents

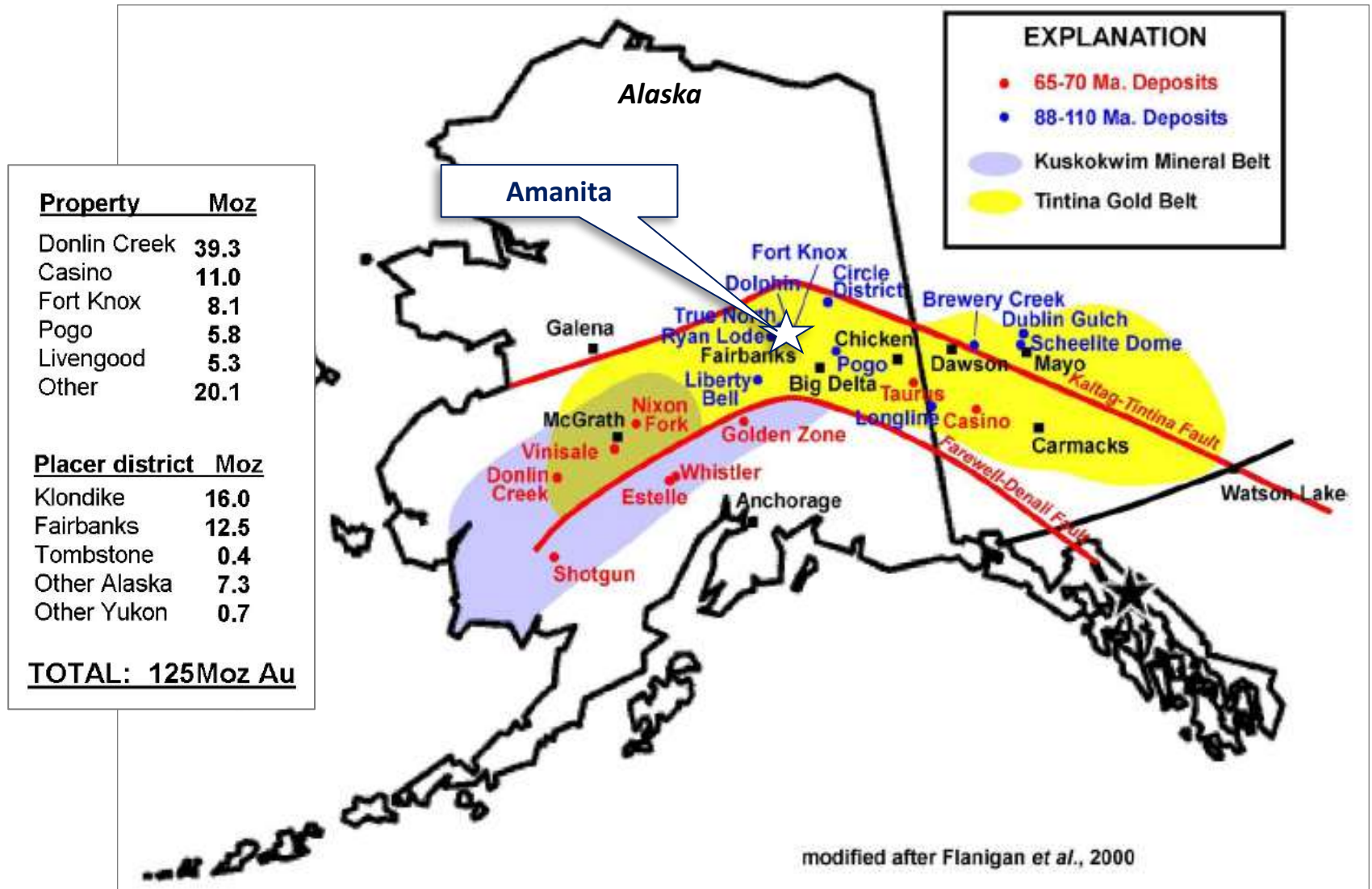
The Presentation is not, and under no circumstances are to be construed as, an advertisement or a public offering of the securities referred to herein. The Presentation is not an offer to sell securities of Avidian and is not a solicitation of offers to purchase these securities where the offer or sale is not permitted. No securities commission or similar authority in Canada has reviewed or in any way passed on the merits of the securities described herein and any representation to the contrary is an offence. No person has been authorized to give any information or to make any representation other than as provided for herein.

Notice to U.S. Persons

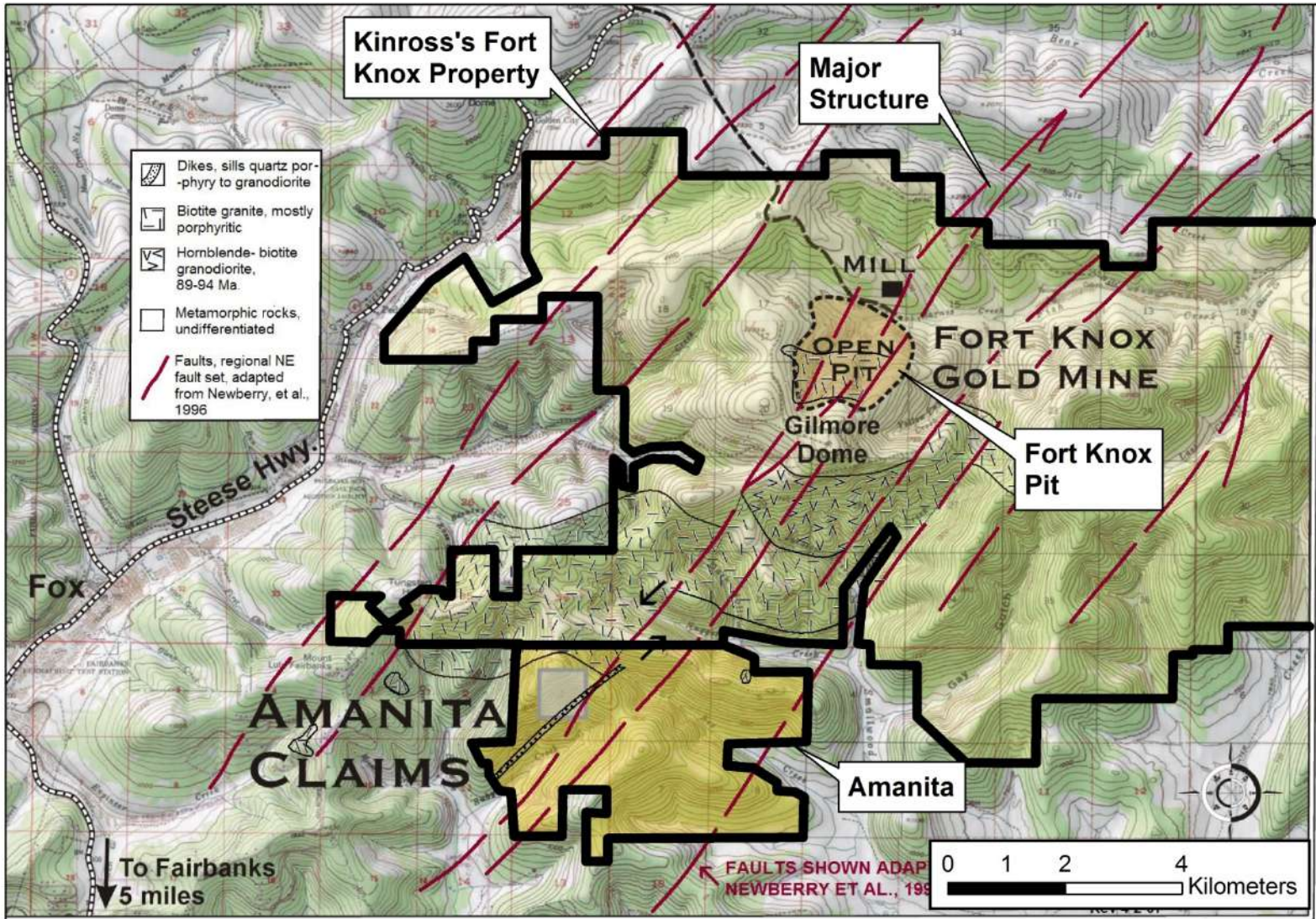
The Presentation is not, and under no circumstances are to be construed as, an advertisement or a public offering of the securities referred to herein. The Presentation is not an offer to sell any securities of Avidian and is not a solicitation of offers to purchase these securities where the offer or sale is not permitted. No securities commission or similar authority in United States has reviewed or in any way passed on the merits of the securities described herein and any representation to the contrary is an offence. No person has been authorized to give any information or to make any representation other than as provided for herein. U.S. investors are advised that the terms "inferred" and "indicated" resources are recognized and required by Canadian regulations, however the U.S. SEC does not recognize the terms. U.S. investors are cautioned not to assume that any part or all of mineral deposits in these categories would ever be converted to reserves.

- 100% interest, 14.6 sq km in area; located in the Tintina Gold Belt of Alaska.
- Within the Fairbanks Mining District, which has historically produced >20 million ounces of gold.
- Excellent access and infrastructure - approximately 15 km northeast of Fairbanks city limits.
- Deposit model is a Intrusion Related Gold System (IRGS); structurally controlled gold, sheared stockwork mineralization similar to Fort Knox (+8 Moz).
- Adjacent and contiguous with Fort Knox that produces approx. 380,000 oz/year at an average grade of 0.50 g/t Au.
- The main mineralized zone (Tonsina Trend) lies within a 2 km x 3 km gold in-soil anomaly.
- 30 of 39 drill holes within the soil anomaly intersected >1.0 g/t Au over 1.5 m, along the 1.6 km long Tonsina mineralized trend. Some highlight results:
 - 4.57 m @ 11.49 g/t Au
 - 22.86 m @ 1.01 g/t Au
 - 12.19 m @ 2.28 g/t Au
 - 13.72 m @ 3.02 g/t Au
- Tonsina mineralized trend open in all directions, along with several other untested targets on the property.
- Additional land is currently being acquired to add to the property package.

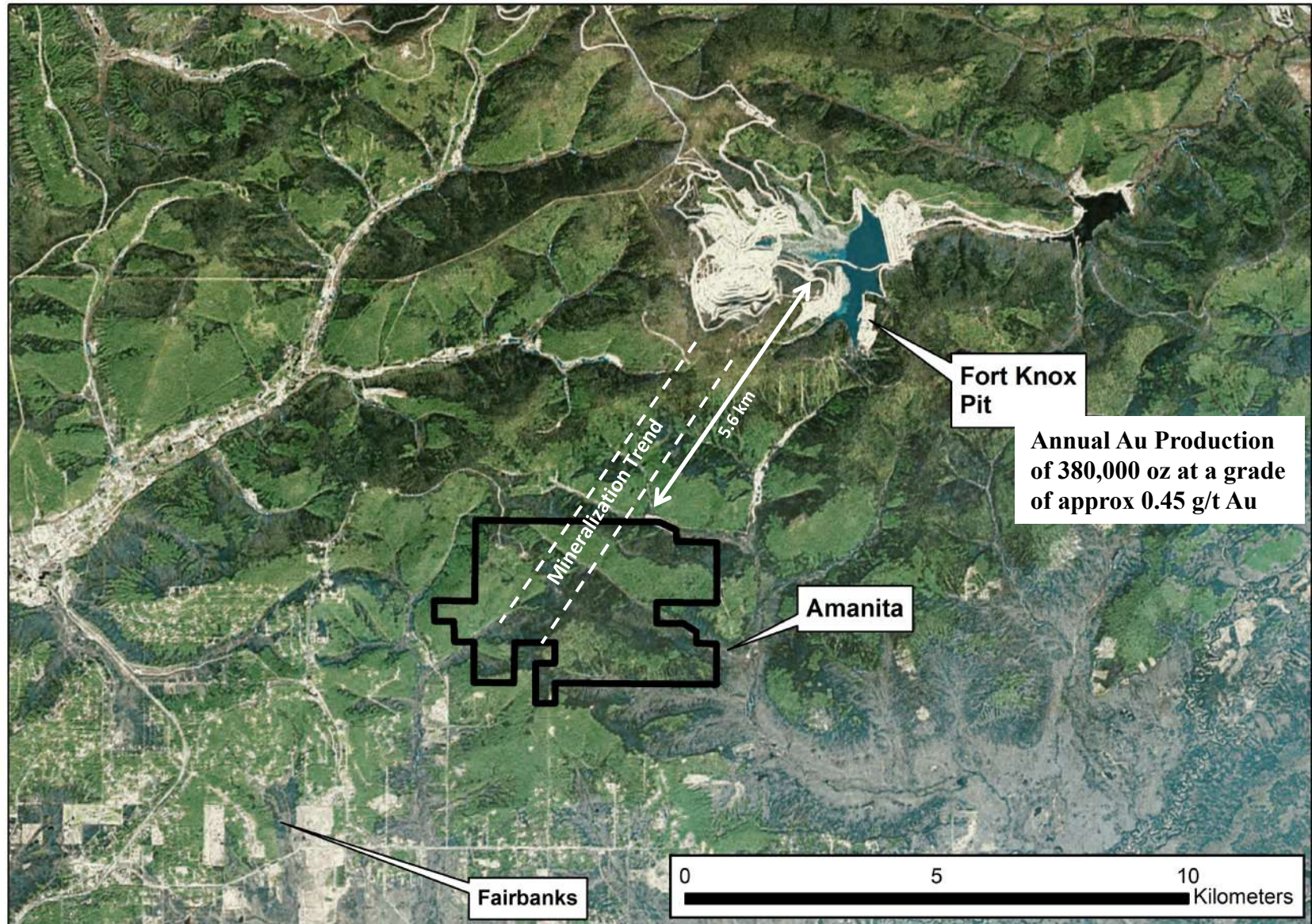
Golden Zone & Amanita Regional Settings



Distribution of Au deposits in the Tintina & Kuskokwim Mineral Belts



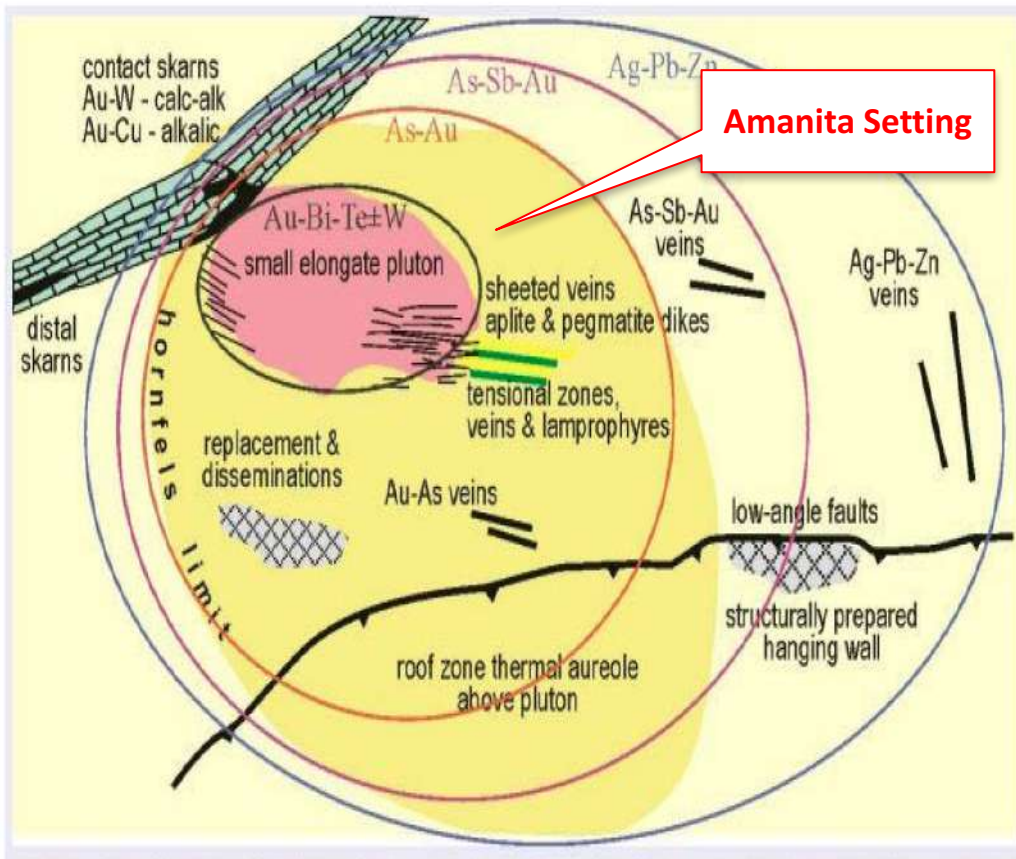
Location of Amanita Relative To The Fort Knox Open Pit



Northern Amanita boundary continuous with Fort Knox Property Boundary

- Area occurs in the Tombstone Gold Belt within the Tintina Gold Province
- Mineralization style considered to be a Intrusion Related Gold Systems, analogous to Fort Knox.
- Regional geology consists of Proterozoic schists and amphibolite intruded by Cretaceous granitoid.
- Regionally, gold occurs in the intrusive (Fort Knox) and the schist (Gil, True North, Ryan, Cleary Hill).
- Fort Knox is +8 Moz and has been in production since 1996.

Intrusion-hosted proximal distal

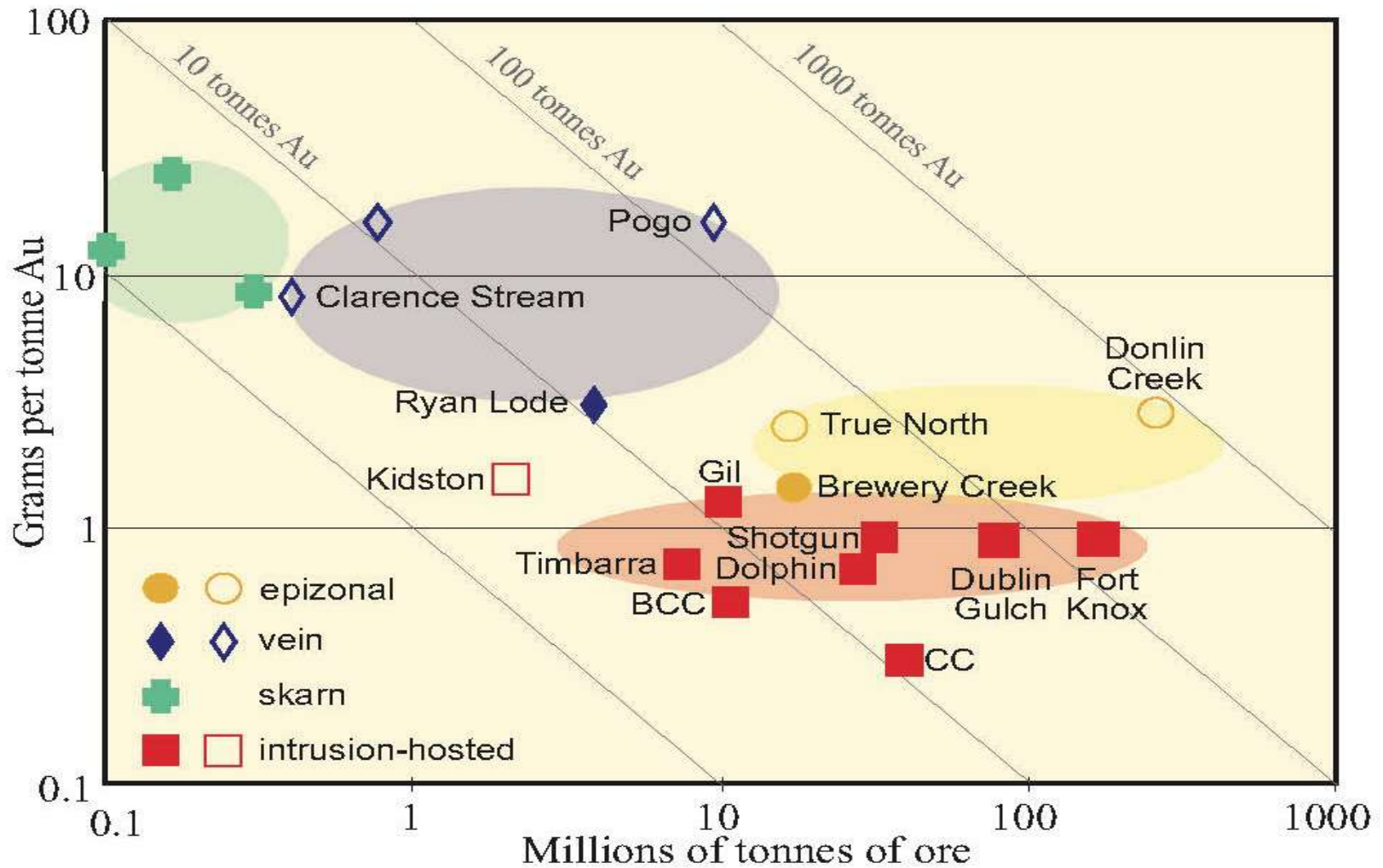


Intrusion Related Gold System model showing range of mineralization styles & geochemical variations outward from a central pluton.

Amanita Property Features

- Mineralization compatible with models for a Intrusion Related Gold System.
- Likely formed in a proximal environment & possible shallow paleodepth and exhibiting a relationship with a mineralized intrusion and elevated Au & pathfinder elements.
- Mineralization style is structurally controlled, quartz veinlets which form stockworks.
- Geological and exploration Au analogue is the shear hosted stockwork Fort Knox (+8 Moz) deposit that lies 5.6 km directly along trend.
- The anomalous soil survey results covering an area of 2 km x 3 km; shallow economic drill hole Au results; geological and geochemical features of known Au mineralization; and proximity to an interpreted intrusive body; make the property highly prospective for a large, shallow gold deposit.

Grade – Tonnage of IRGS

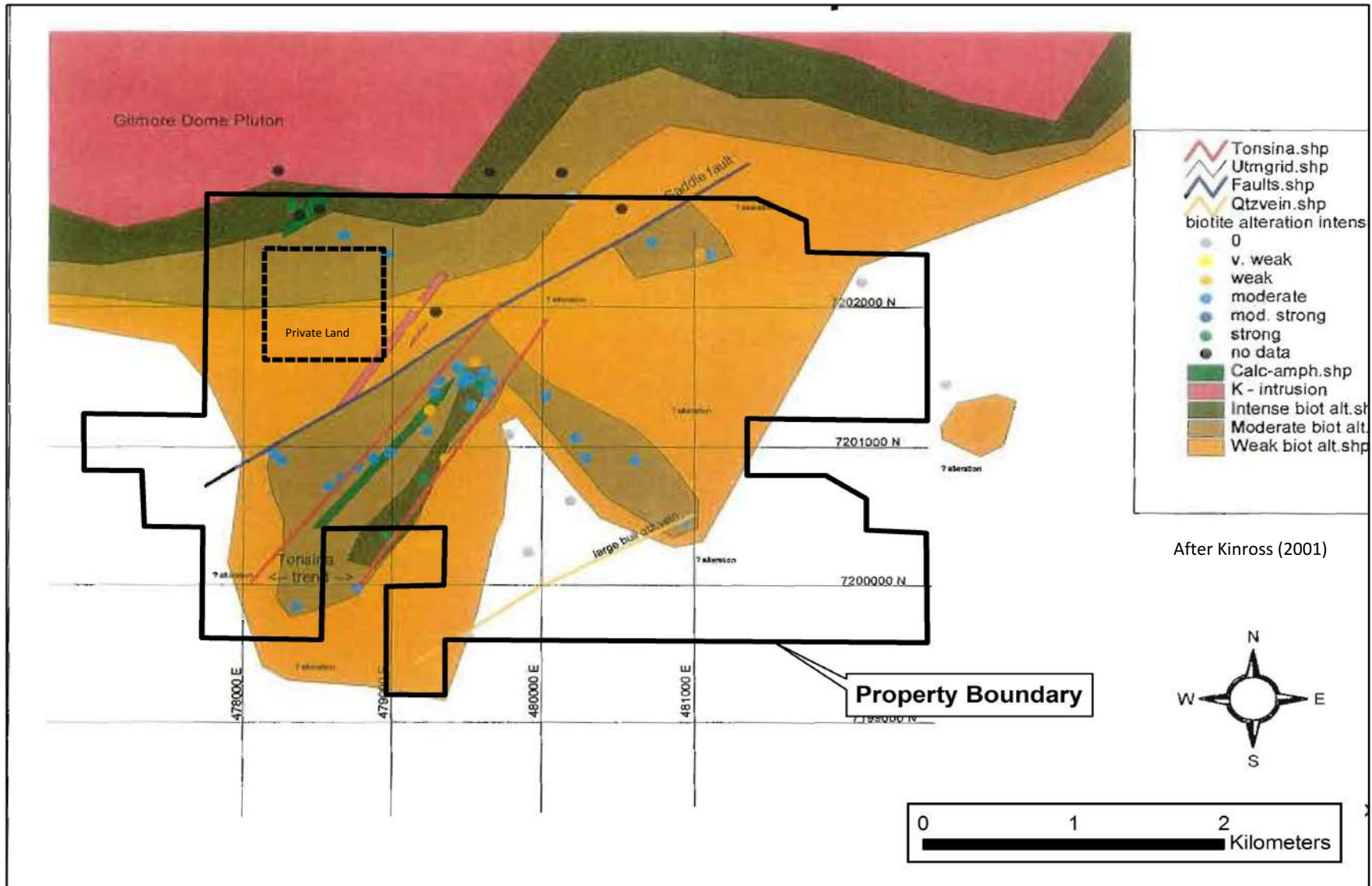


Comparison Between Fort Knox and Amanita



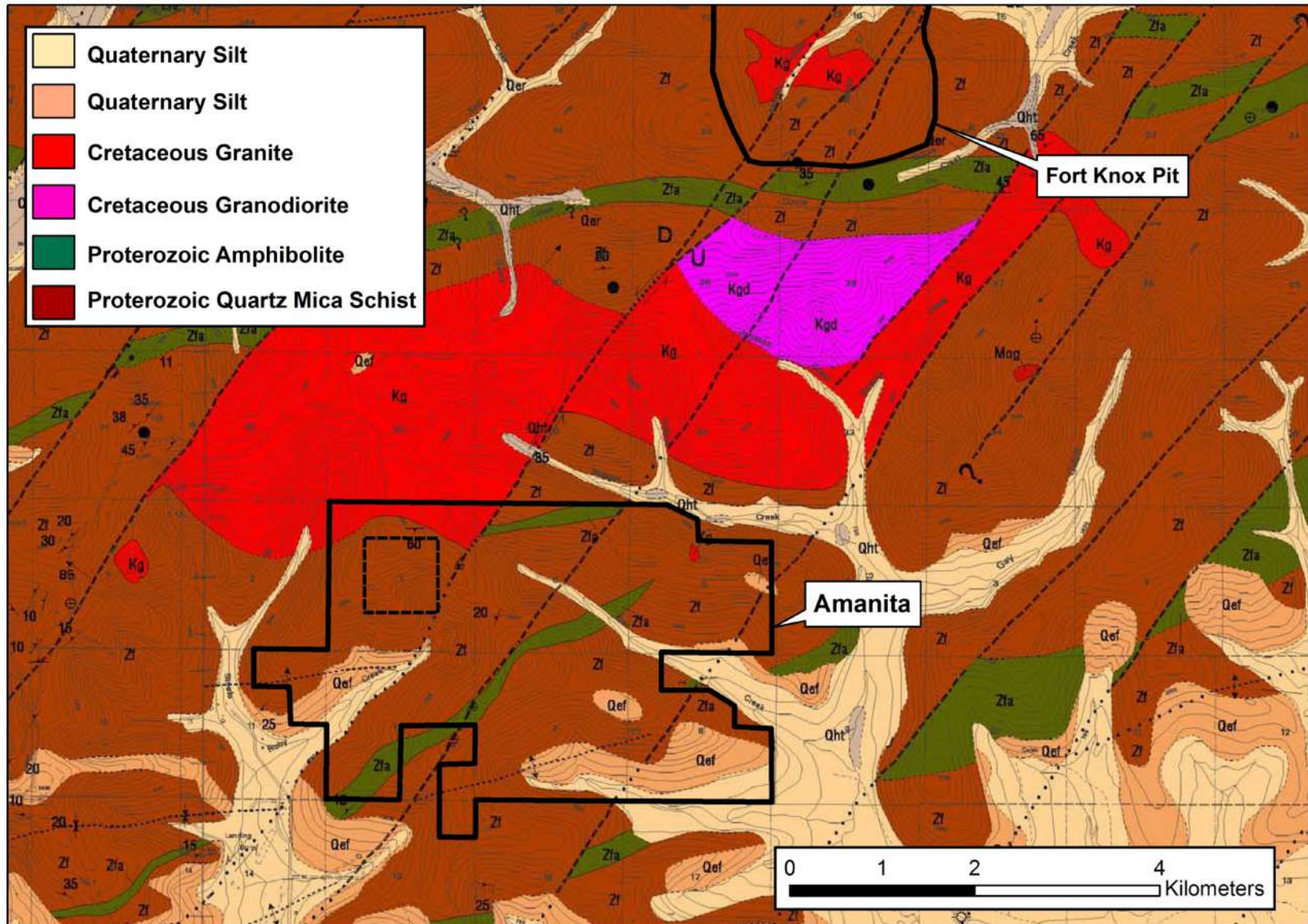
Fort Knox	Amanita
+8 Moz Gold	Undetermined oz Gold
Gold in Cretaceous Granite	Gold Adjacent to Interpreted Buried Granite
Within Corridor of Two NE Structures	Along Strike in Same Corridor
Open Pit Mine	Known Gold mineralization all in Open Pitable setting
Extensive Biotite Hornfels Aureole	Extensive Biotite Hornfels Aureole
Gold Occurs with Bismuthinite, Scheelite, Arsenopyrite and Quartz-feldspar Veins	Gold Occurs with Bismuthinite, Scheelite, Arsenopyrite and Quartz-feldspar Veins
Model Shows Inner Au-Bi, halo of Sb-As	Soils Show Inner Au-Bi, halo of Sb-As
Present grade of approx. 0.50 g/t Au; Cut-off Grade 0.16 g/t Au	30 of 39 drill holes intersected >1.0 g/t Au over 1.5 m
Gold is Free Milling	Visible gold reported in several drill holes and seen in local float
Current Status – Life of Mine to 2020	Advanced Exploration

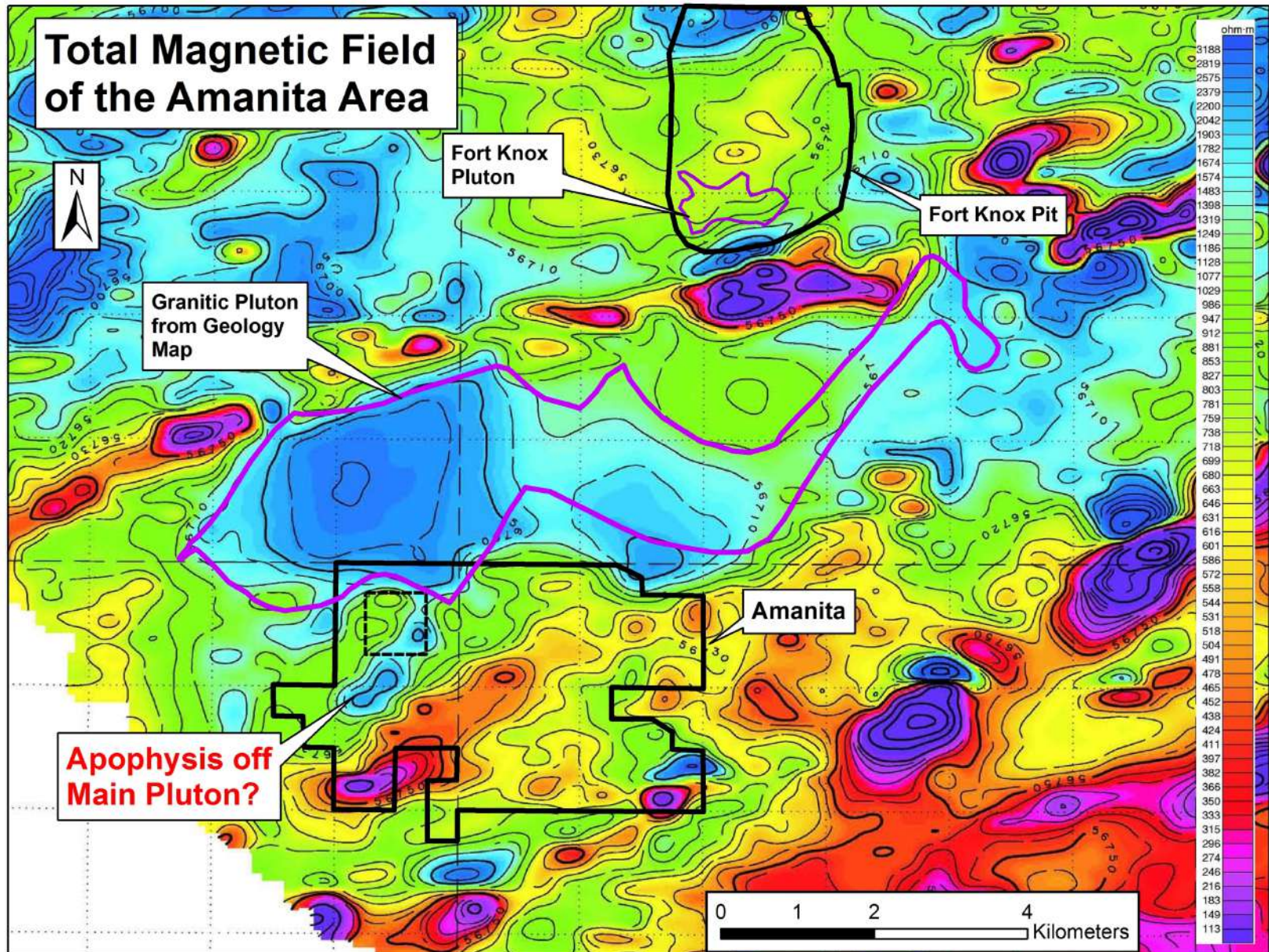
Biotite Hornfels Map

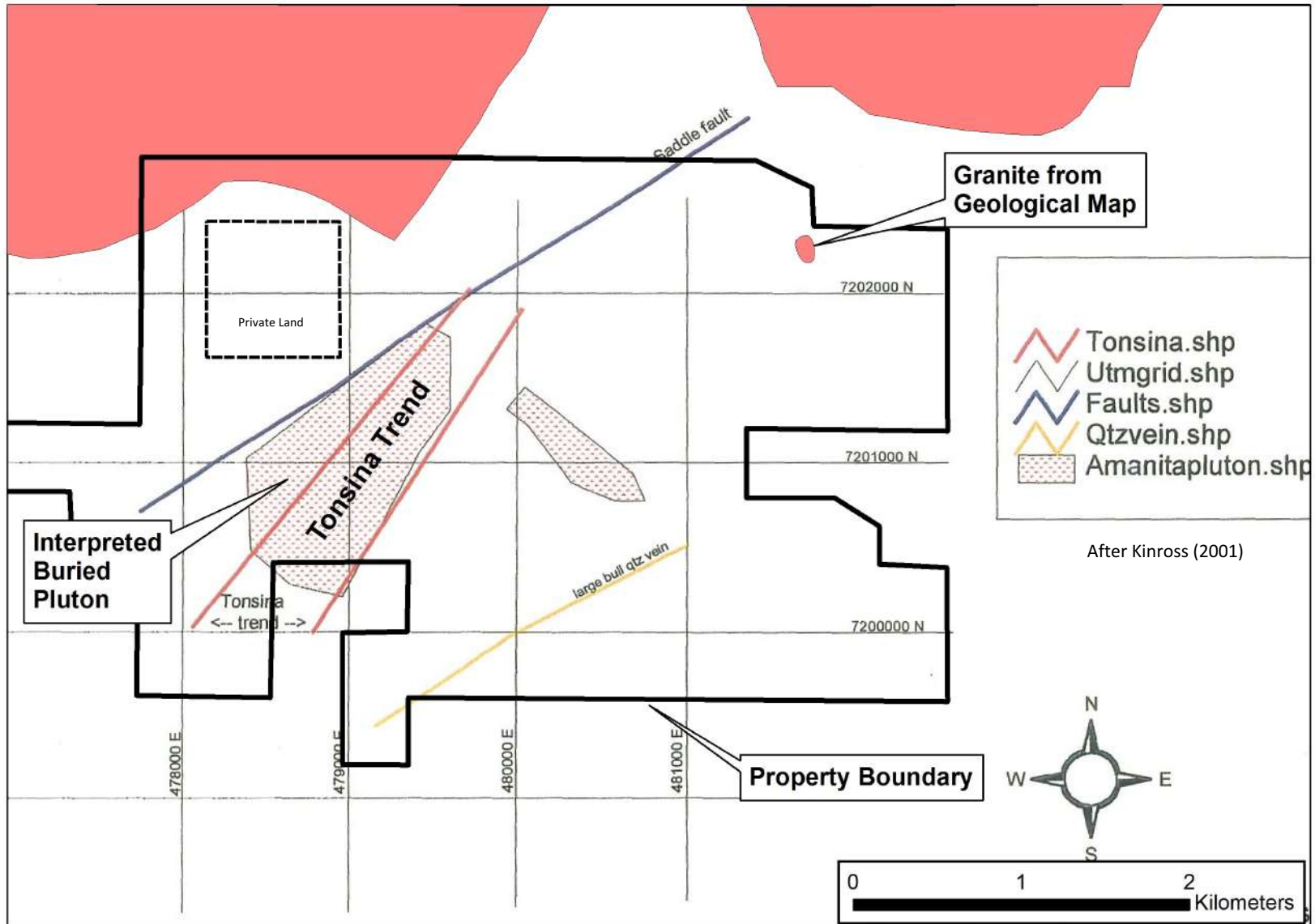


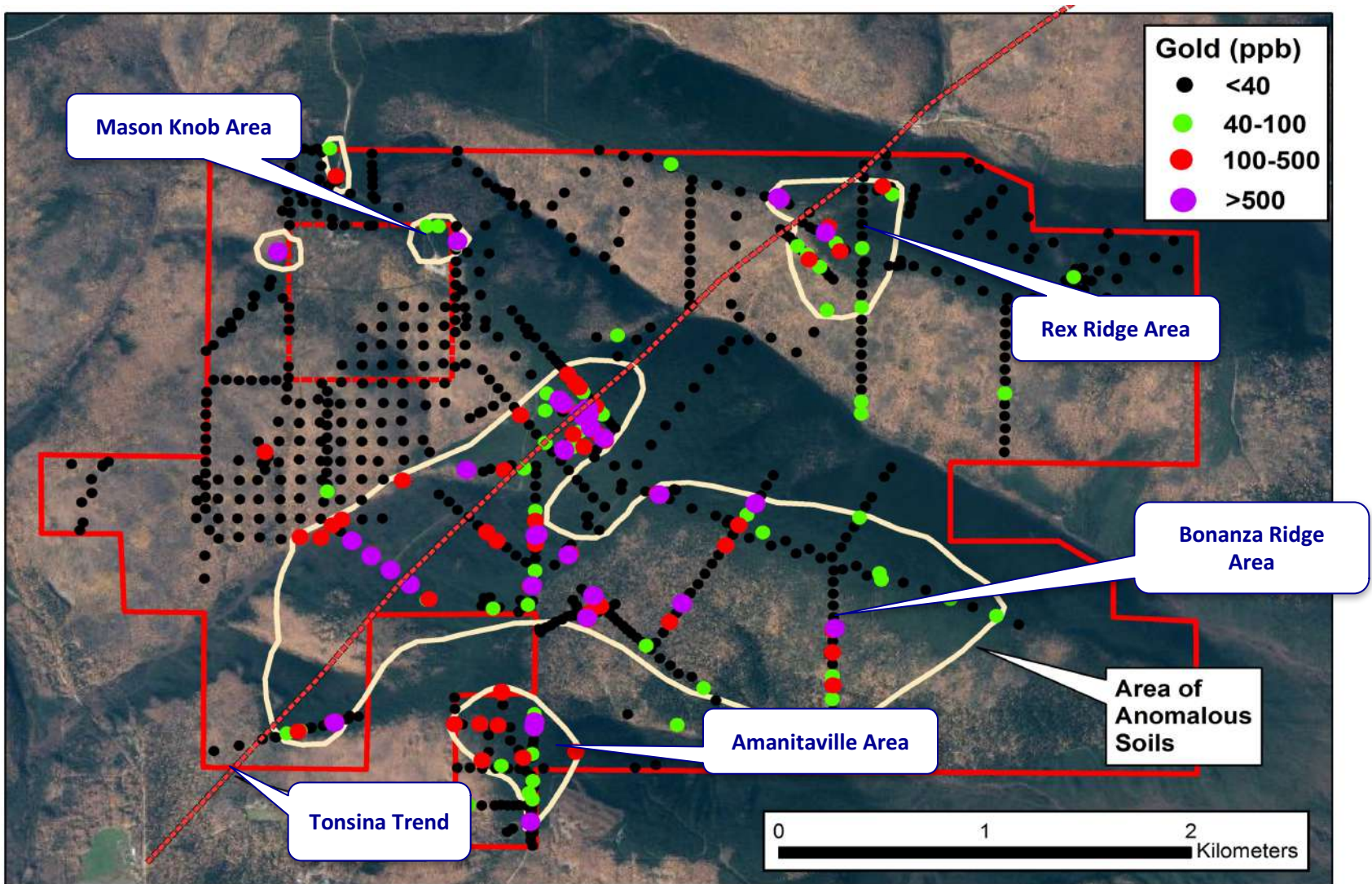
After Kinross (2001)

Suggests the presence of a pluton underlying the Tonsina Trend area of Amanita; Kinross has documented a similar hornfels aureole in the Fort Knox area



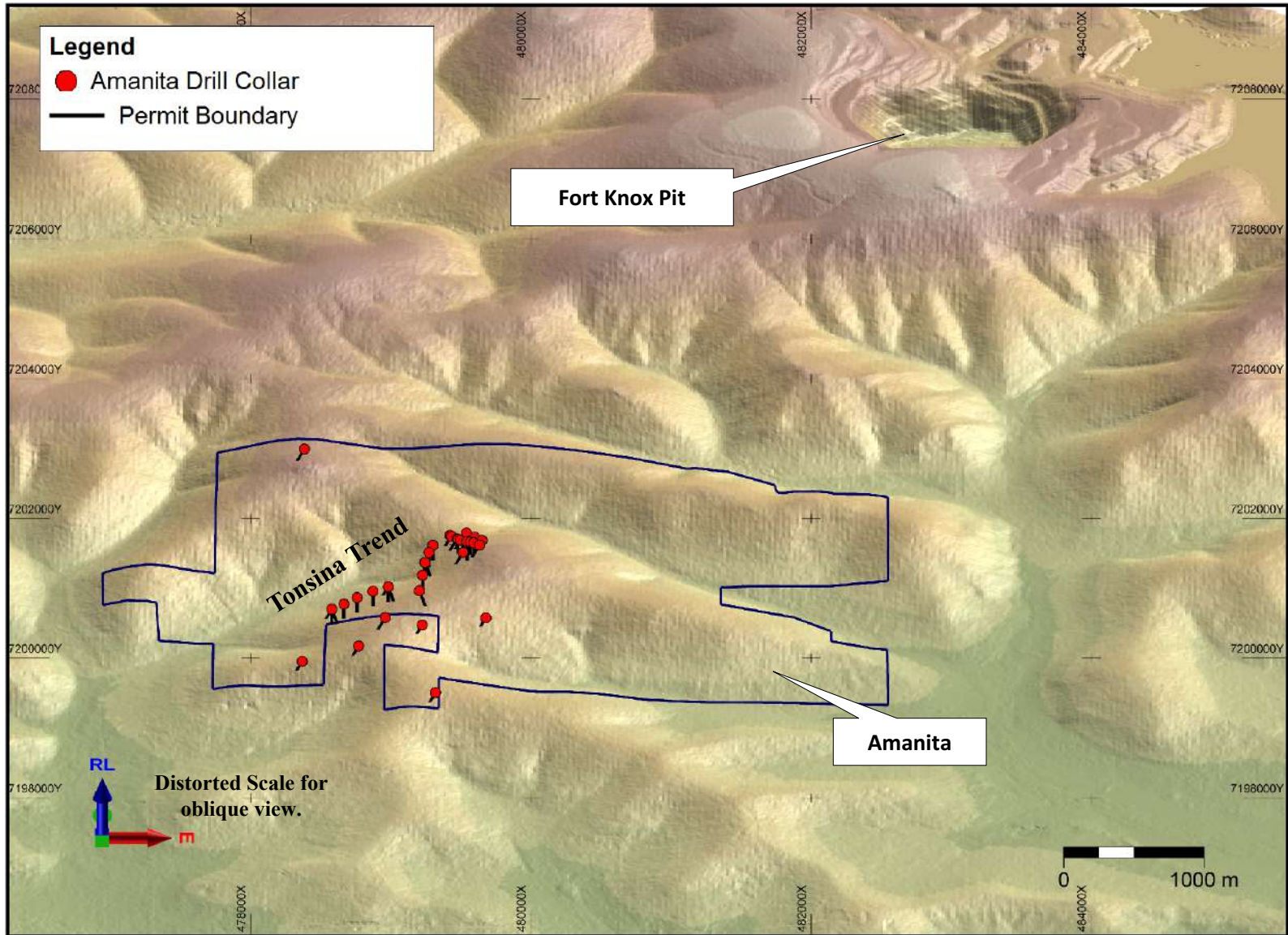




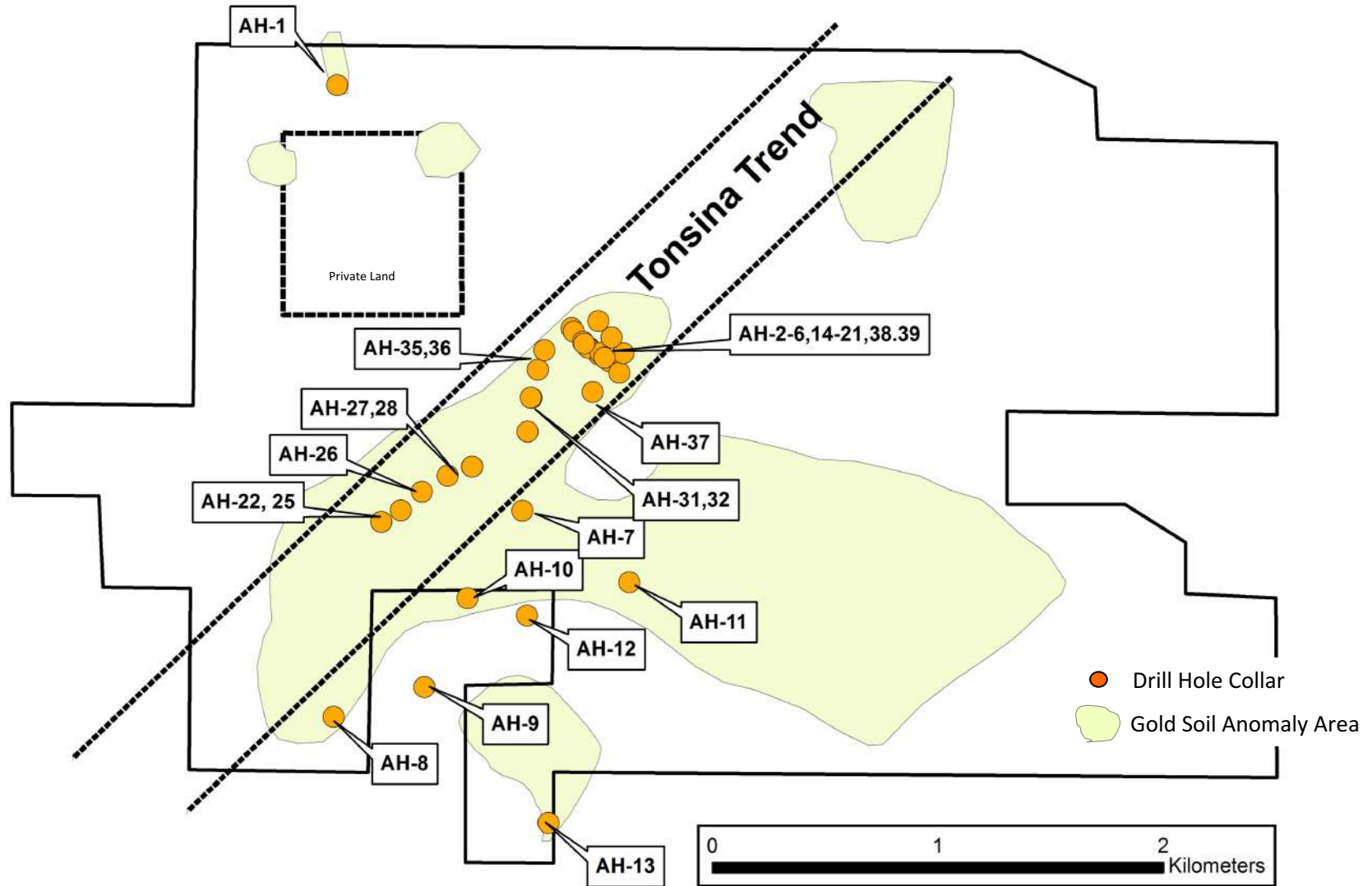


2 km x 3 km large anomalous soil outline.
Tonsina Trend straddles main structural corridor over the interpreted concealed pluton and associated biotite hornfels alteration.

Birds Eye View Towards Fort Knox Open Pit



Drill Hole Locations



Most drill holes are within the area of anomalous soils, but unevenly distributed.

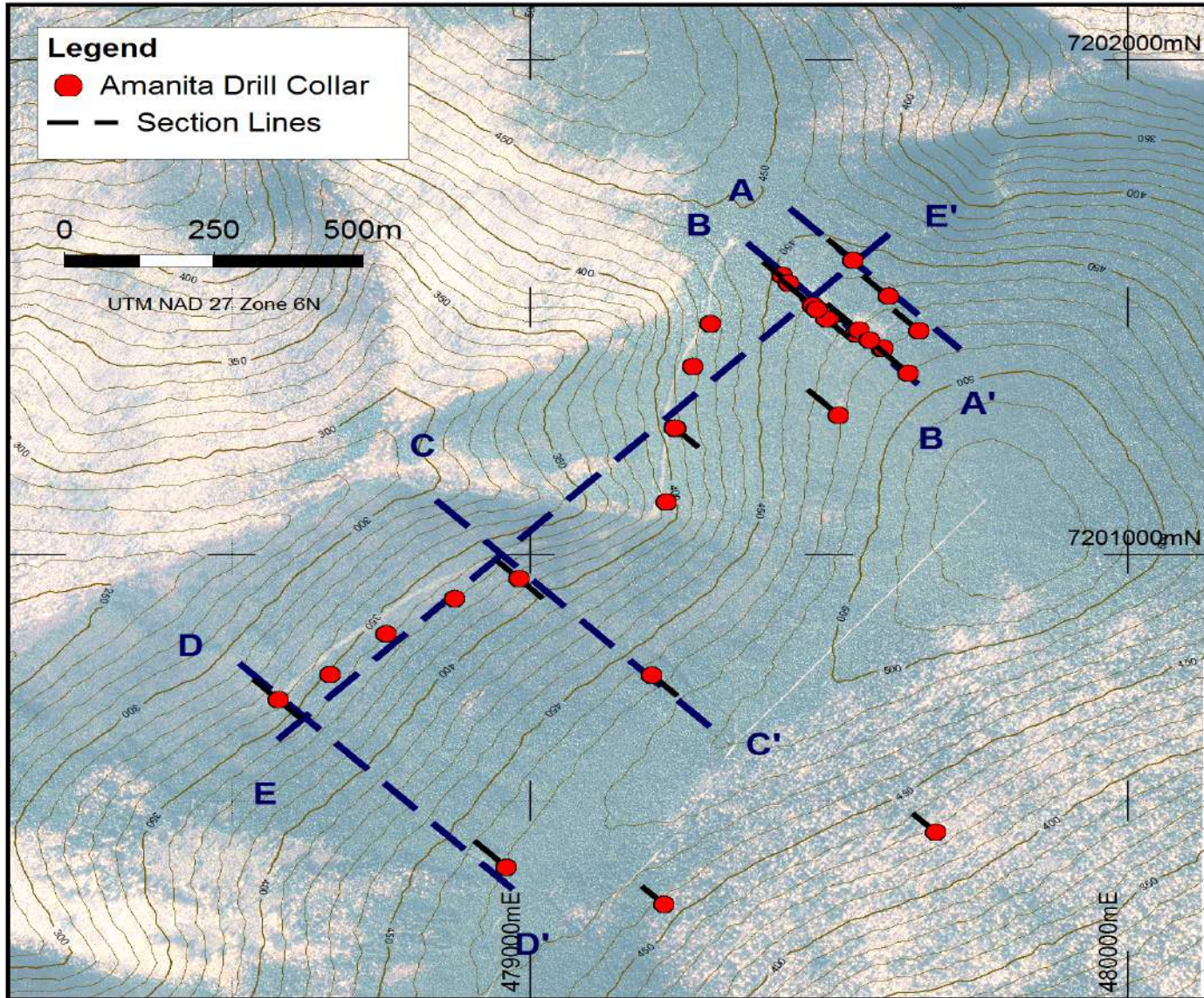
Selected Drill Hole Results – Tonsina Trend Area



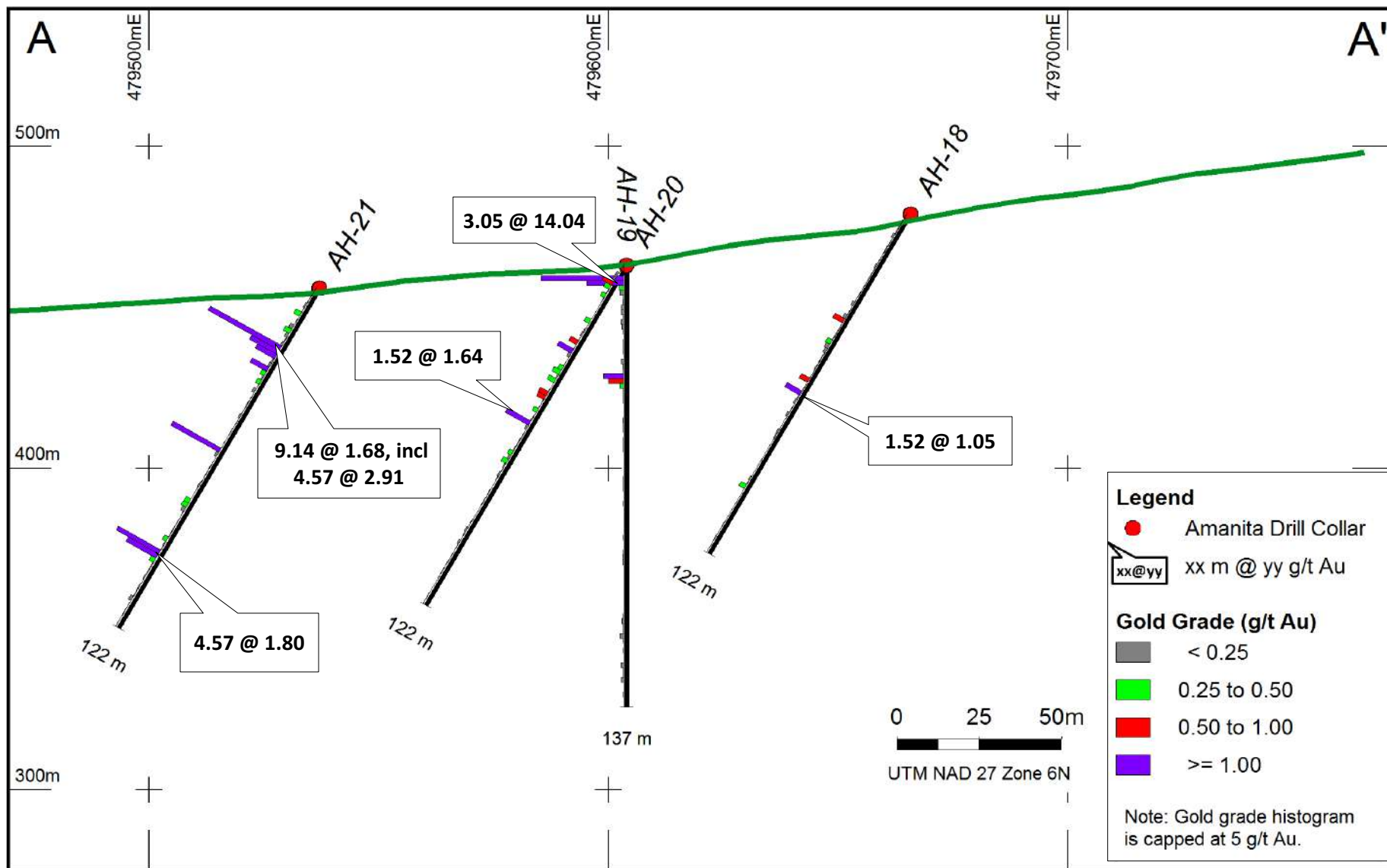
Drill Hole intersections generally less than 100 m below surface

Hole No.	Meters	g/t Au	Hole No.	Meters	g/t Au
18	1.52	1.05	7	3.05	0.48
19	3.05	14.04	28	1.52	1.13
	4.57	0.80		12.19	0.41
20	1.52	1.64	29	3.05	0.71
21	9.14	1.68		12.09	0.92
	1.52	3.37		1.52	2.06
	4.57	1.80	30	1.52	3.92
2	3.05	3.36		9.14	0.48
3	13.72	3.02		1.52	1.63
4	1.52	1.11	10	1.52	1.71
	7.62	1.70		1.52	1.10
5	1.52	5.06		4.57	0.73
	12.19	2.28		10.67	1.08
	22.86	1.01	22	1.52	1.17
6	4.57	0.81		1.52	1.00
14	3.05	1.04	24	3.05	0.85
	16.76	1.03		3.05	1.13
15	1.52	1.51	9	1.52	2.21
	4.57	11.49	12	1.52	1.13
	1.52	1.76	13	3.05	0.96
	1.52	2.11	26	1.52	1.02
16	3.05	3.63		1.52	1.09
	3.05	2.60	27	1.52	1.83
17	3.05	1.41		3.05	1.39
	1.52	2.23		1.52	1.92
	3.05	2.37	32	1.52	2.15
38	12.19	0.77		4.57	2.30
	1.52	1.65	33	3.05	1.15
	9.14	2.23		3.05	1.77
39	1.52	2.79	35	6.10	1.00
	1.52	1.13		4.57	1.06
	3.05	2.99	37	1.52	2.94

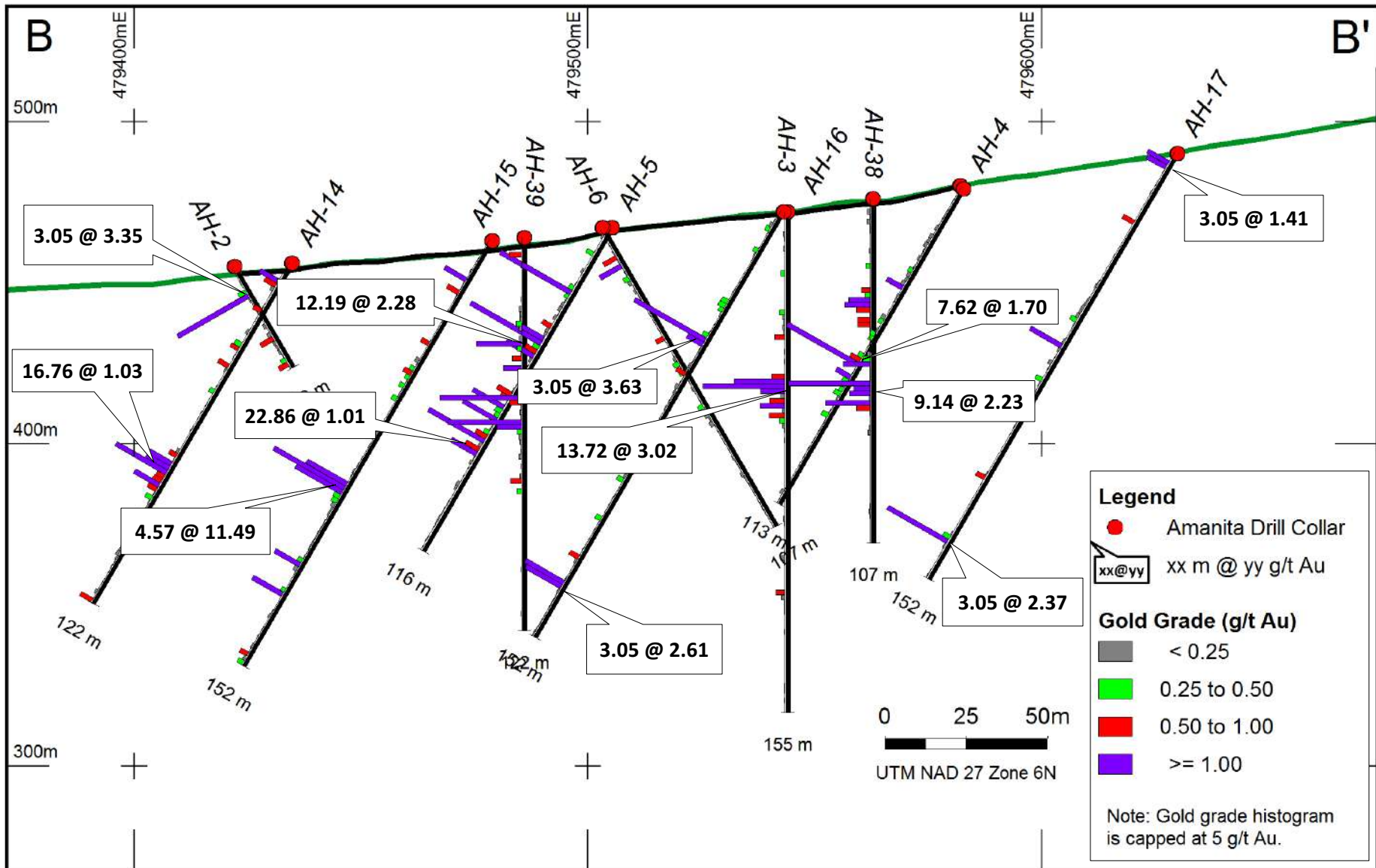
Reference Lines along Tonsina Trend



Cross – Section A-A'



Cross – Section B – B''



Section B – B'

Legend

● Amanita Drill Collar

xx@yy xx m @ yy g/t Au

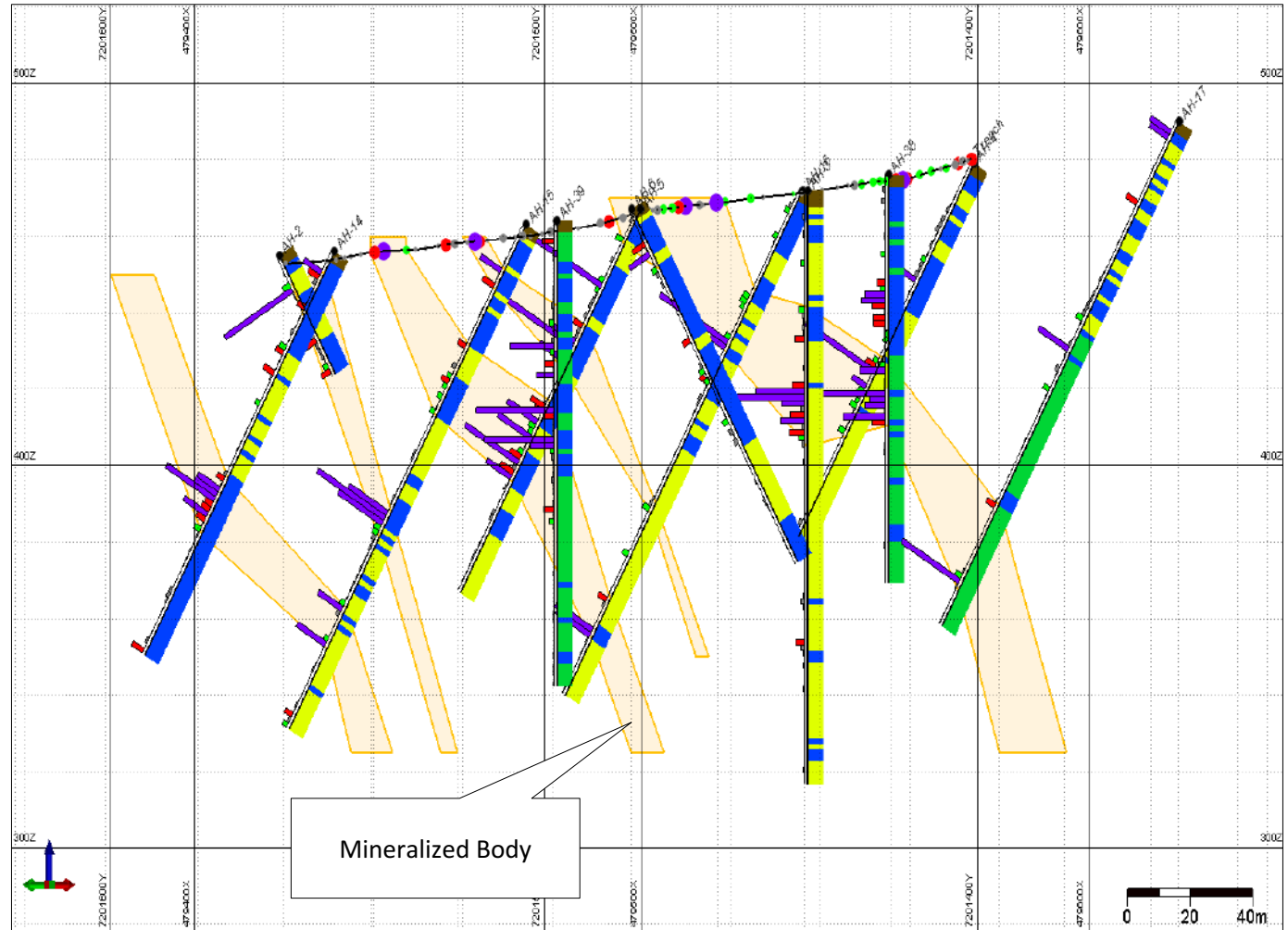
Gold Grade (g/t Au)

- < 0.25
- 0.25 to 0.50
- 0.50 to 1.00
- ≥ 1.00

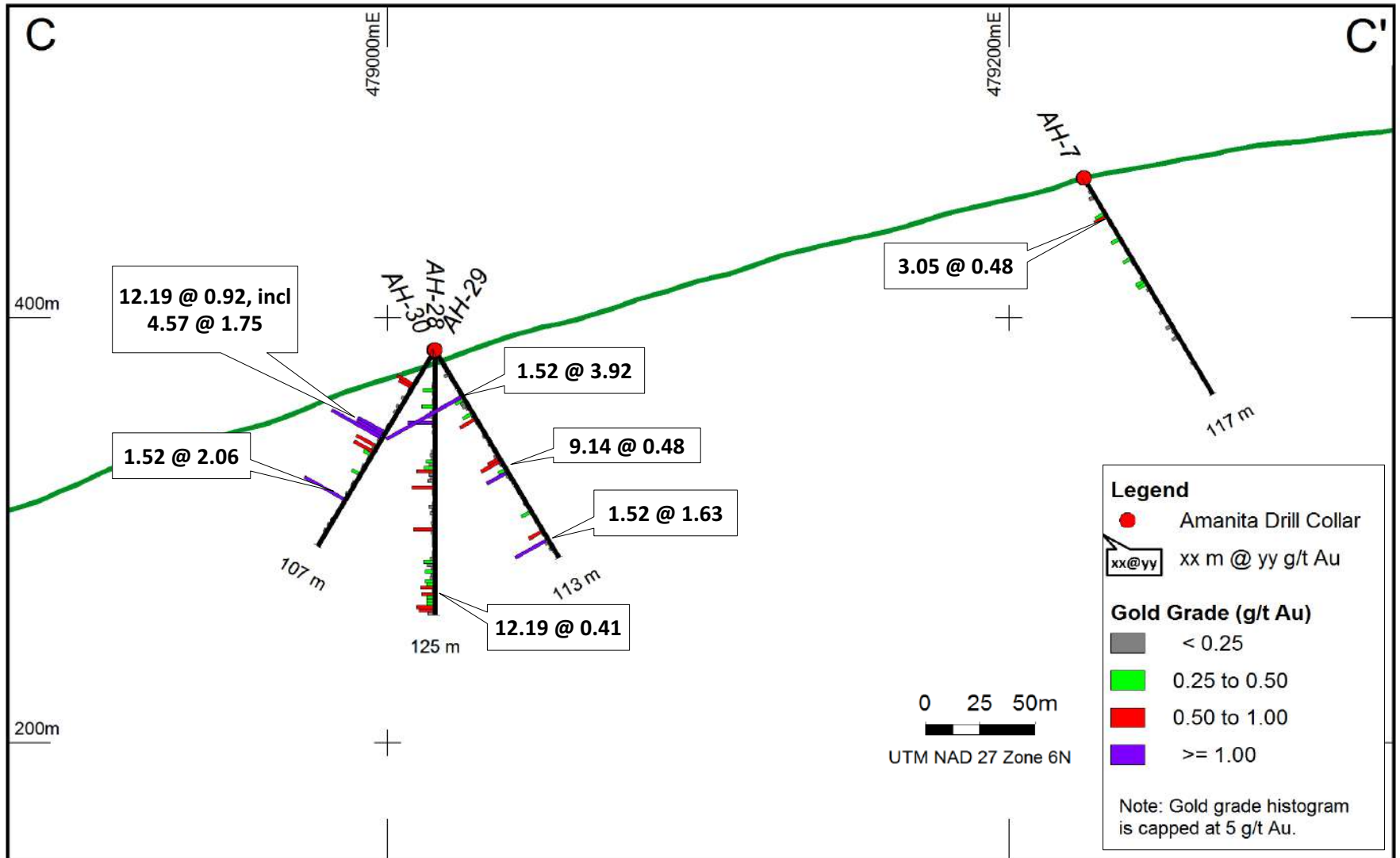
Note: Gold grade histogram is capped at 5 g/t Au.

Lithology Hatch

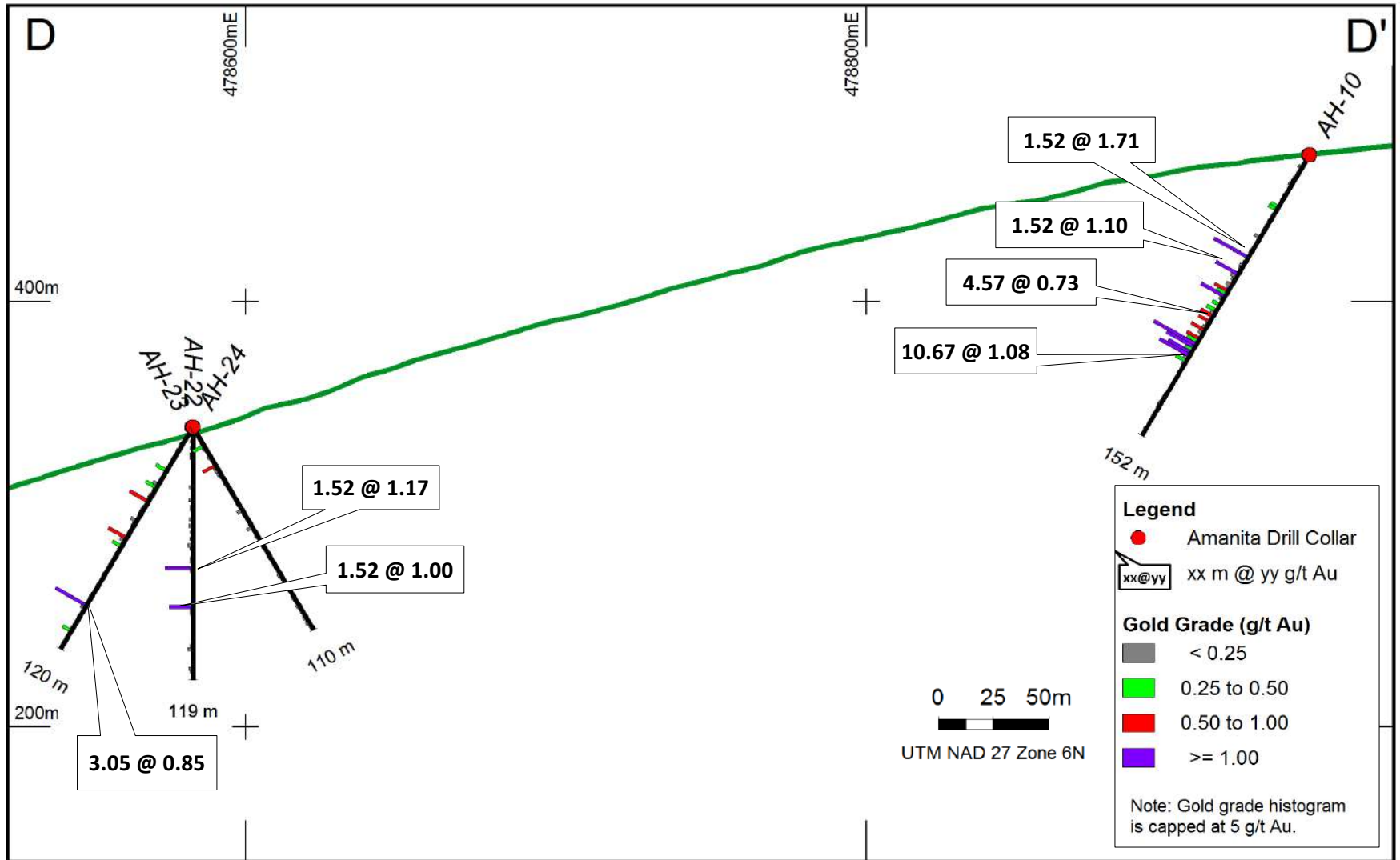
- Casing
- Granodiorite
- Quartzite
- Biotite Schist
- Schist



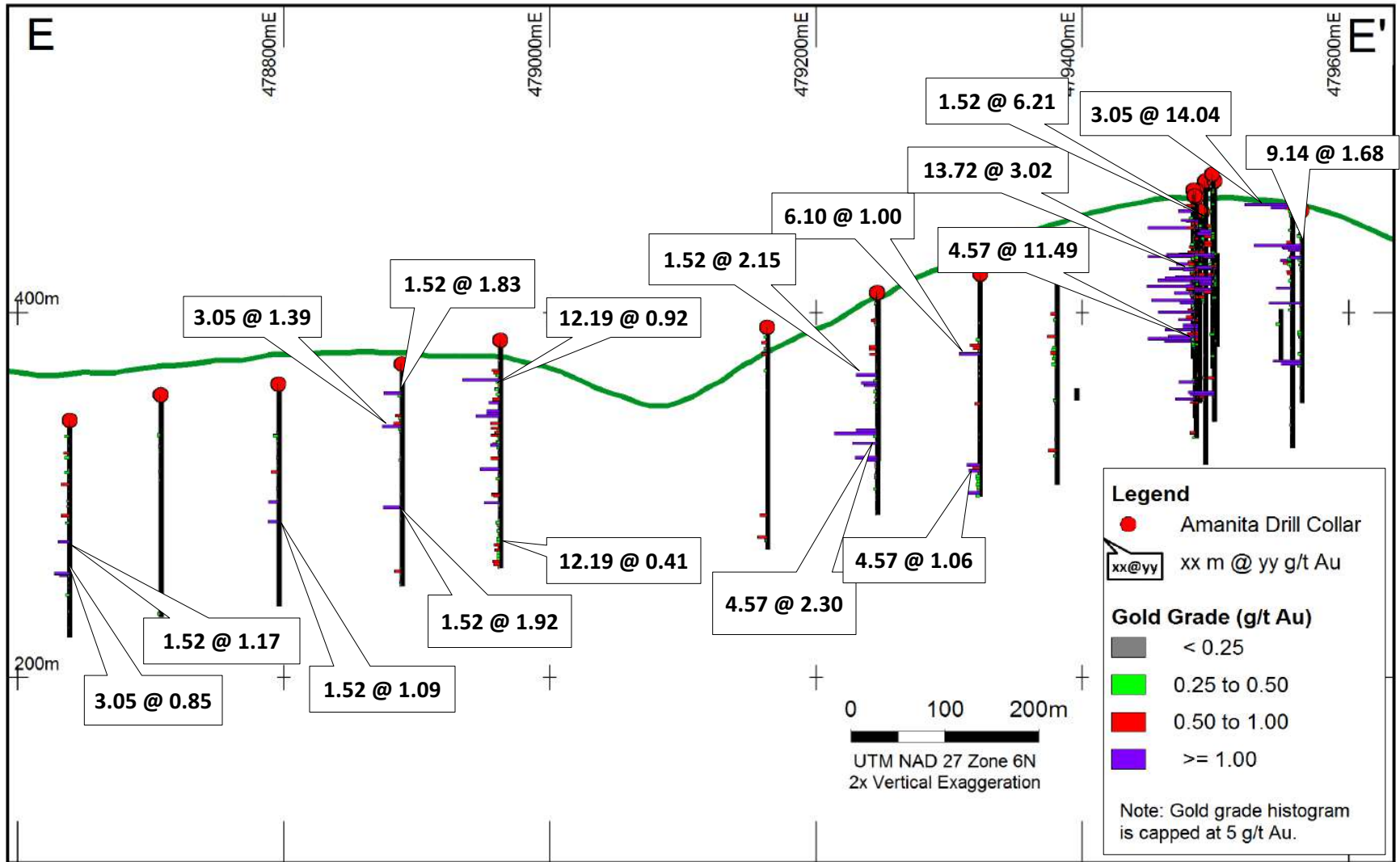
Cross – Section C - C'



Cross – Section D - D'

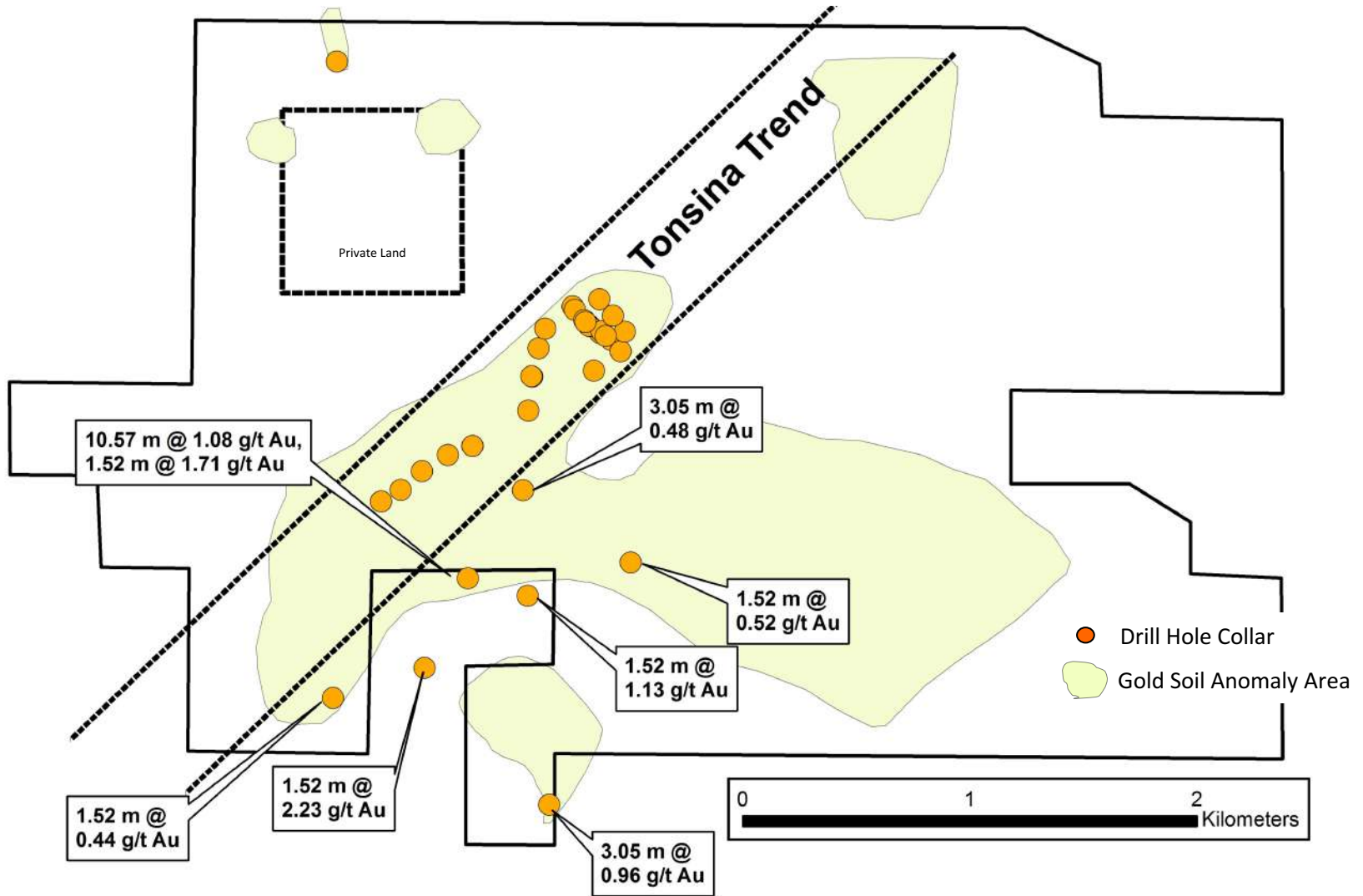


Longitudinal Section E - E'

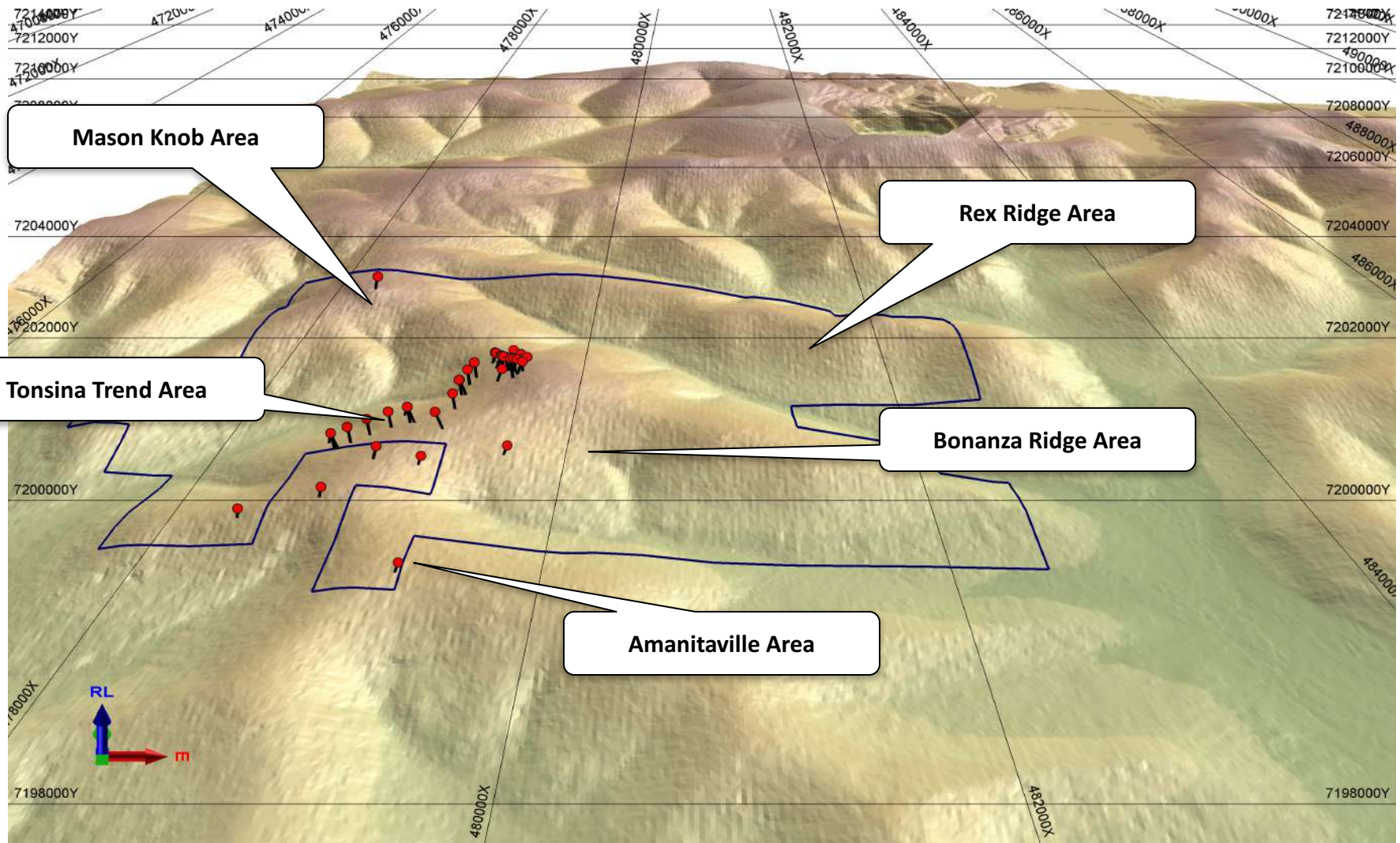


Well mineralized along the Tonsina Trend for over 1.6 km and remains open.

Drill Hole Results Adjacent to Main Trend



Follow Up Target Areas



Based on Drill hole information, geology, alteration and soil geochemistry



- Adjacent to, and contiguous with the Fort Knox open pit mine, which produces 380,000 oz/yr at a average grade of approx. 0.50 g/t Au.
- Structurally controlled gold mineralization, exhibiting geological, structural and alteration similarities to the Fort Knox mine (+8 Moz).
- The main mineralized zone (Tonsina Trend) lies directly on trend, 5.6 km southwest of the Fort Knox deposit.
- Large gold-in-soil anomaly 2 km x 3 km – hosts the Tonsina mineralized trend plus other target areas.
- Very limited and unevenly distributed drilling in the 1.6 km long Tonsina Trend:
 - 30 of 39 holes intersected >1.0 g/t Au over 1.5 m, (generally less than 100 m below surface):
 - 4.57 m @ 11.49 g/t Au,
 - 22.86 m @ 1.01 g/t Au,
 - 12.19 m @ 2.28 g/t Au
 - 13.72 m @ 3.02 g/t Au
 - visible gold reported in several holes
- Tonsina mineralized trend open in all directions, plus several other untested targets on the property.
- Fort Knox mining operation expected to be exhausted by 2020, therefore will be in need of a new deposit.



- Complete digitizing & analysis of all data.
- Re-log chip samples from all RC holes.
- Prospecting, mapping and additional sampling.
- Fill in soil sampling.
- Terraspec survey.
- Trenching - approximately 1,400 m in 2 trenches at Tonsina and 1 trench at Rex Ridge. - for collecting samples and structural information of the mineralization and to perform geochemichemistry, petrography.
- Initial core hole drill program of approximately 2,000 m on Tonsina Trend.
- Allocate core hole drilling on other mineralized zones following mapping, sampling and soil survey results.



Main Access Road to Amanita

- 88 Claims (14.6 sq Km)
- Royalty 3% NSR that can be bought for US \$1 million per % point.
- Current Holding Cost of approx. US\$ 25,000 per year (Claim maintenance and assessment to Alaska).
- Lease payments totaling US \$1,235,000 spread out over 15 years (starts at \$15,000 in 2016, \$25,000 in 2017, \$30,000 in 2018 and escalates \$10,000 per year to the 15th year) with a US \$3 million buyout. Lease payments are credited towards the buyout.

The Amanita Property is entirely on State of Alaska land.

The State of Alaska is supportive of sound mineral development and has several programs in place to facilitate mining development:

Large Mine Permitting Team Program (LMPTP)

The Alaska Department of Natural Resources (ADNR) is the lead agency responsible for approving the mining and construction permits for the project. The team provides guidance and oversight in the permitting process, identify key environmental studies, file permit applications and work on behalf of the company with all agencies both State and Federal.

Roads to Resources program (R2R)

Works with state agencies, resource developers, and other interested parties to design and build projects that support development.

Alaska Industrial Development and Export Authority (AIDEA)

A public corporation of the State created to promote the health, security, and general welfare of the people of the state, and increase job opportunities and encourage the economic growth.

Division of Economic Development (DED)

A one-stop shop that helps stakeholders navigate the network of programs offering technical assistance and support for mineral development. Works with other state agencies to facilitate mineral development in the state